

# Wisconsin Salt Wise Partnership

A coalition of organizations coming together  
to reduce salt pollution in our lakes, streams and drinking water.



**Madison  
Water Utility**



**Public Health**  
MADISON & DANE COUNTY



**LAND & WATER  
RESOURCES  
DEPARTMENT**



**Madison Metropolitan  
Sewerage District**

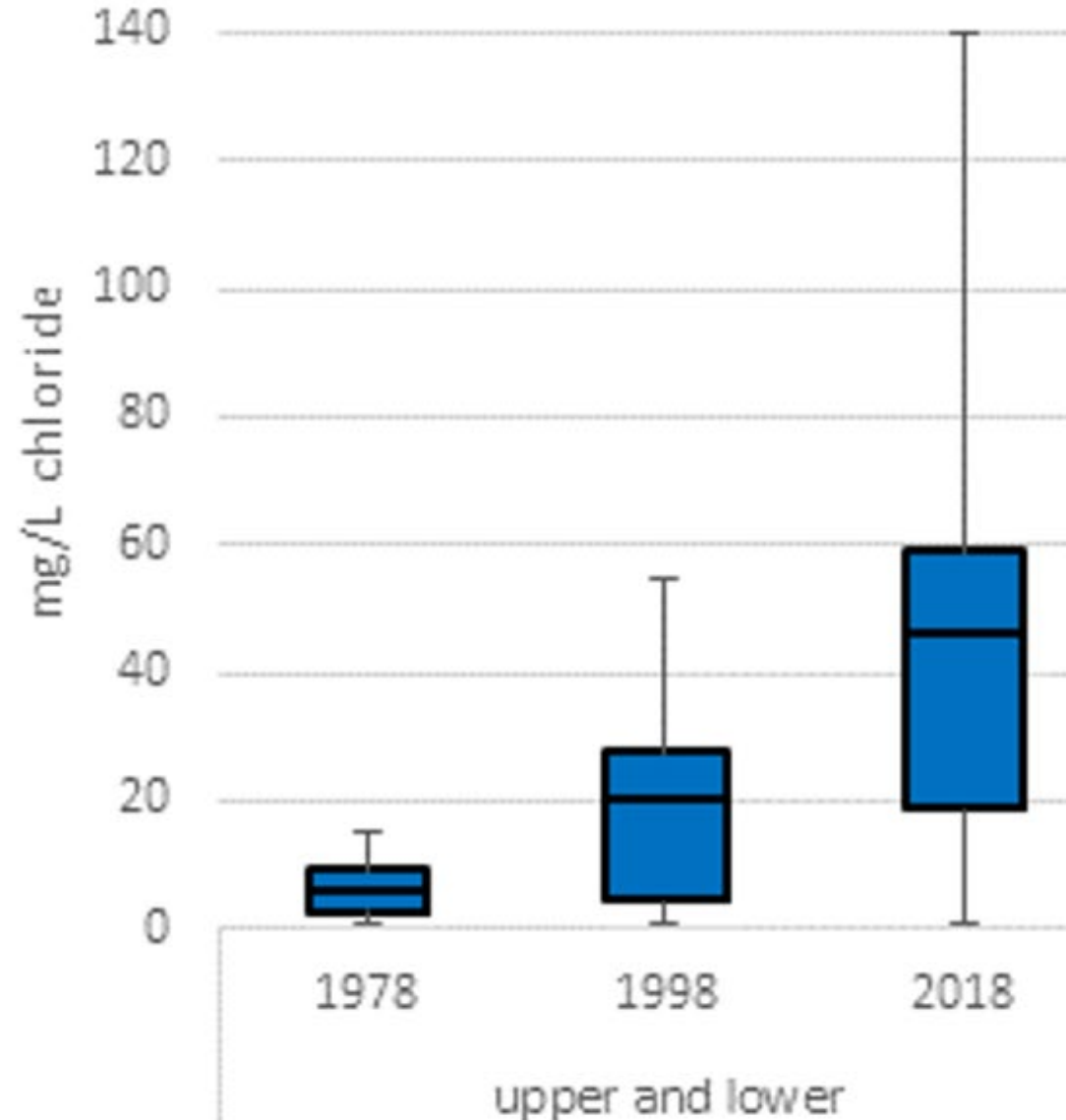


**WISCONSIN**  
UNIVERSITY OF WISCONSIN-MADISON



# Chloride in Madison Drinking Water Wells

Madison Dane County Public Health



## Road Salt Study at Well 14





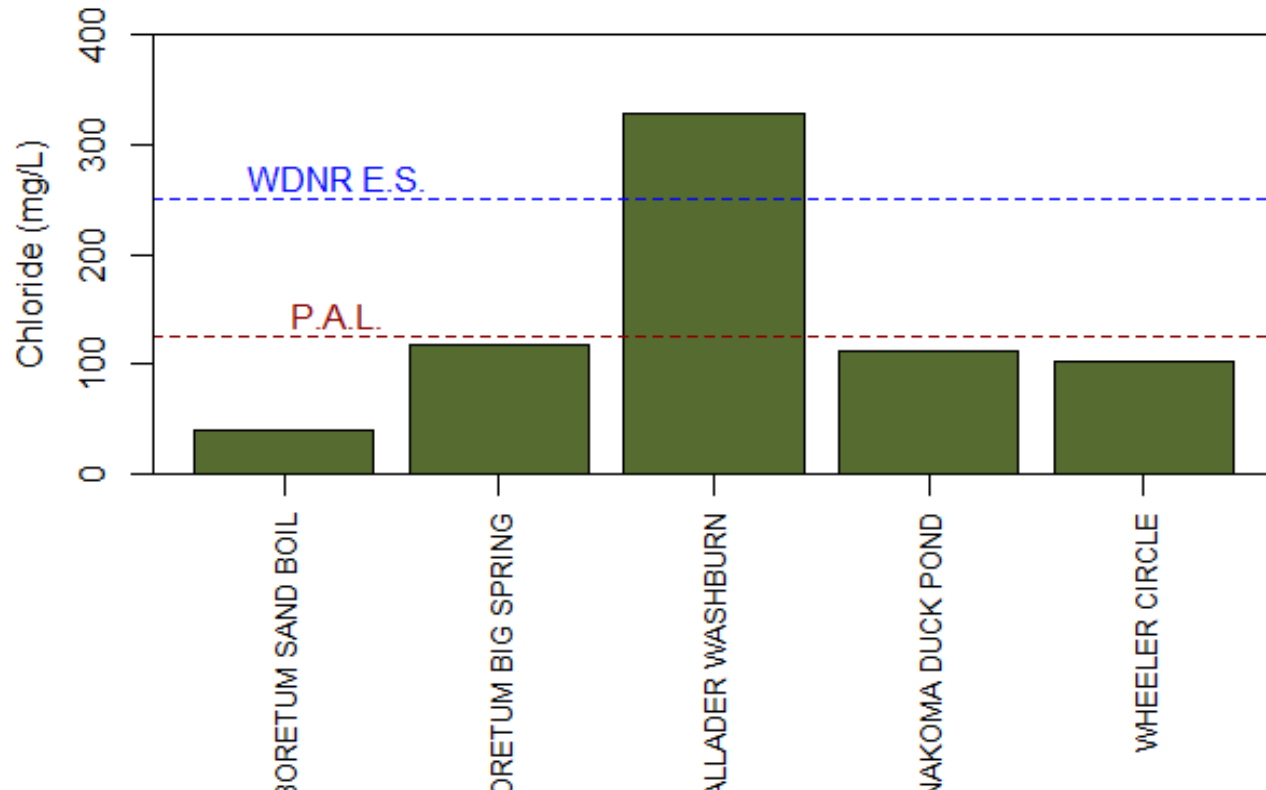
# UW Arboretum Springs



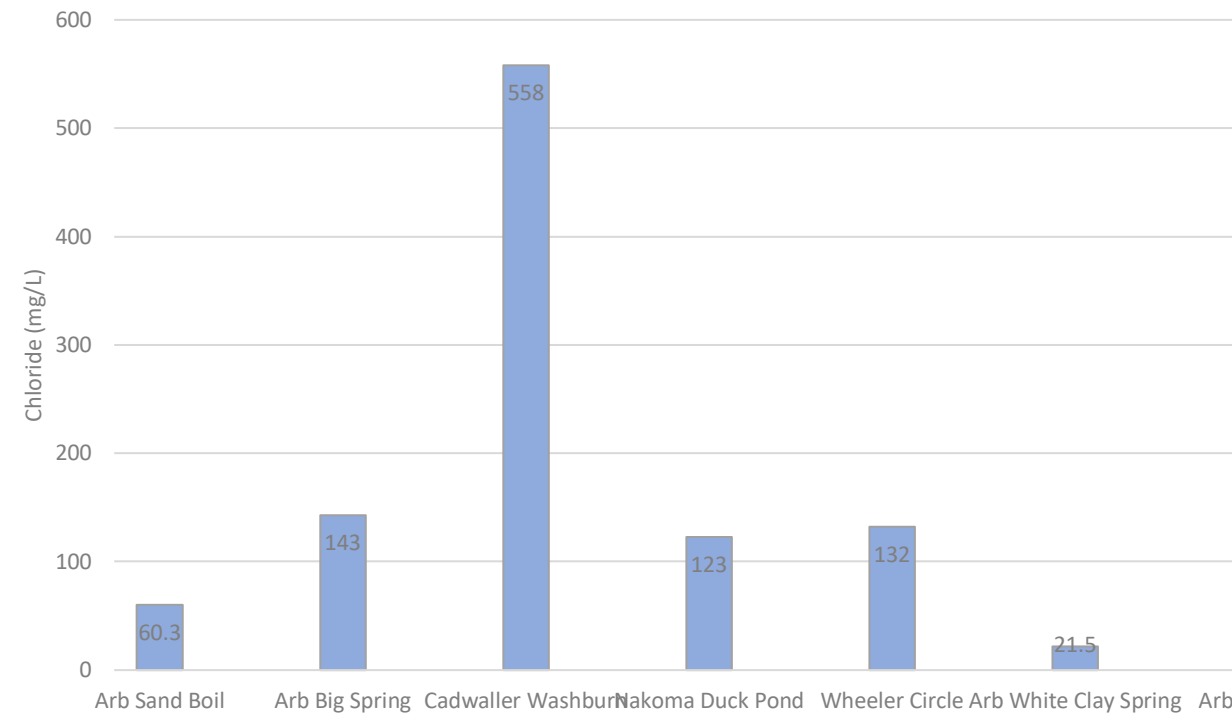


# UW Arboretum Springs

2012 Mean chloride concentrations in the Lake Wingra springs



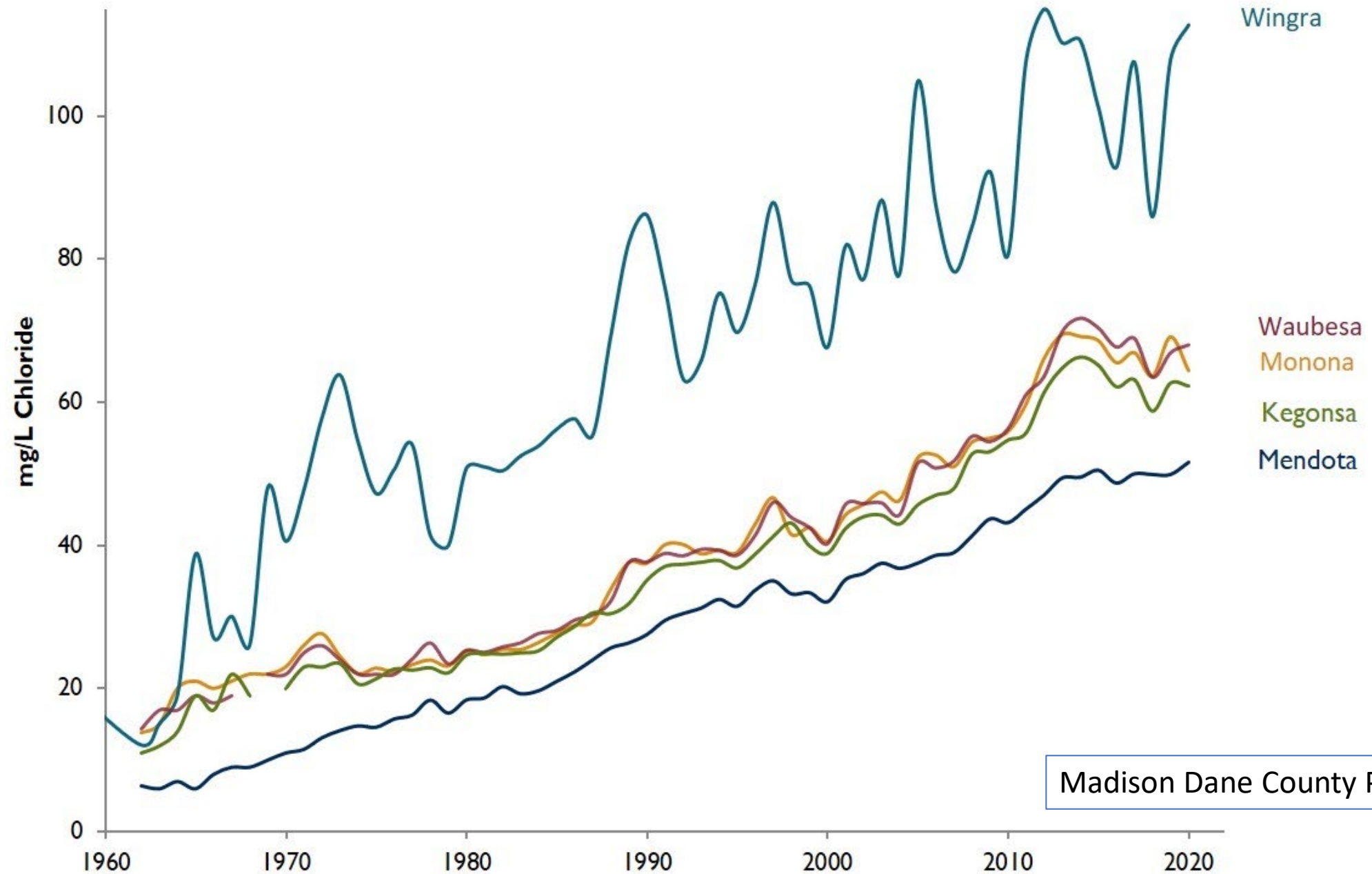
2020 Chloride Concentrations in Lake Wingra Springs



Roger Bannerman and Marian Farrior



# Yahara Lakes Annual Chloride Levels



# Chloride in our Lakes and Rivers

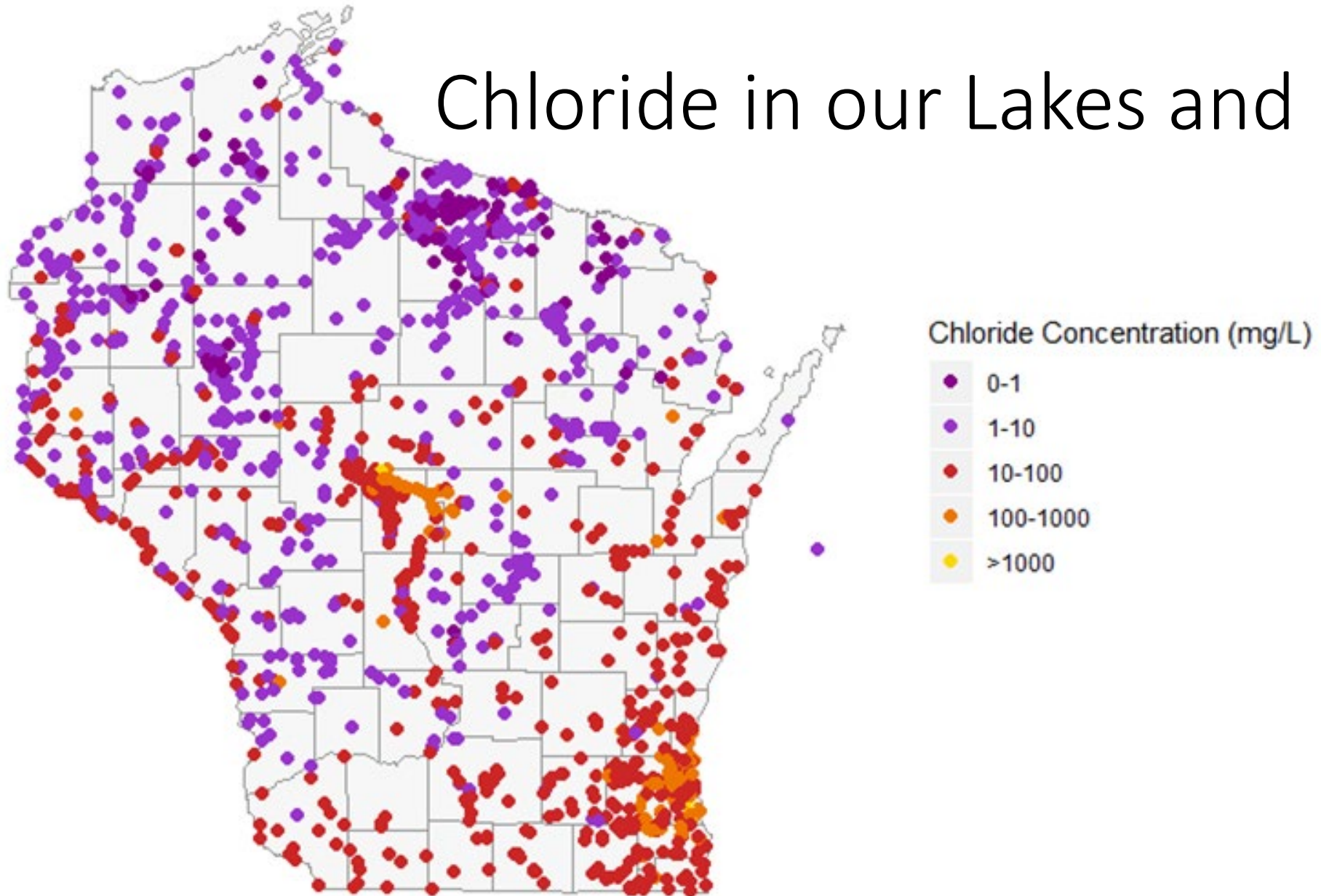


Figure by Linnea Rock using data from [waterqualitydata.us](https://waterqualitydata.us)



# Wisconsin Salt Wise Partnership

A coalition of organizations coming together to reduce salt pollution in our lakes, streams and drinking water.



# WI Salt

January 11<sup>th</sup> - 15<sup>th</sup>

## Awareness Week

### #thetruecostofsalt

The true cost of salt to our freshwater infrastructure, wildlife and pets may be higher than you think!

**((•))** Webinars livestreamed via YouTube (12:30-1pm every day)

#### Monday

Salty Streams and Formerly Freshwater Lakes  
An Ecosystem Perspective

#### Tuesday

Be Salt Wise and Pet Smart

#### Wednesday

Salt Your Dinner, Not Our Drinking Water

#### Thursday

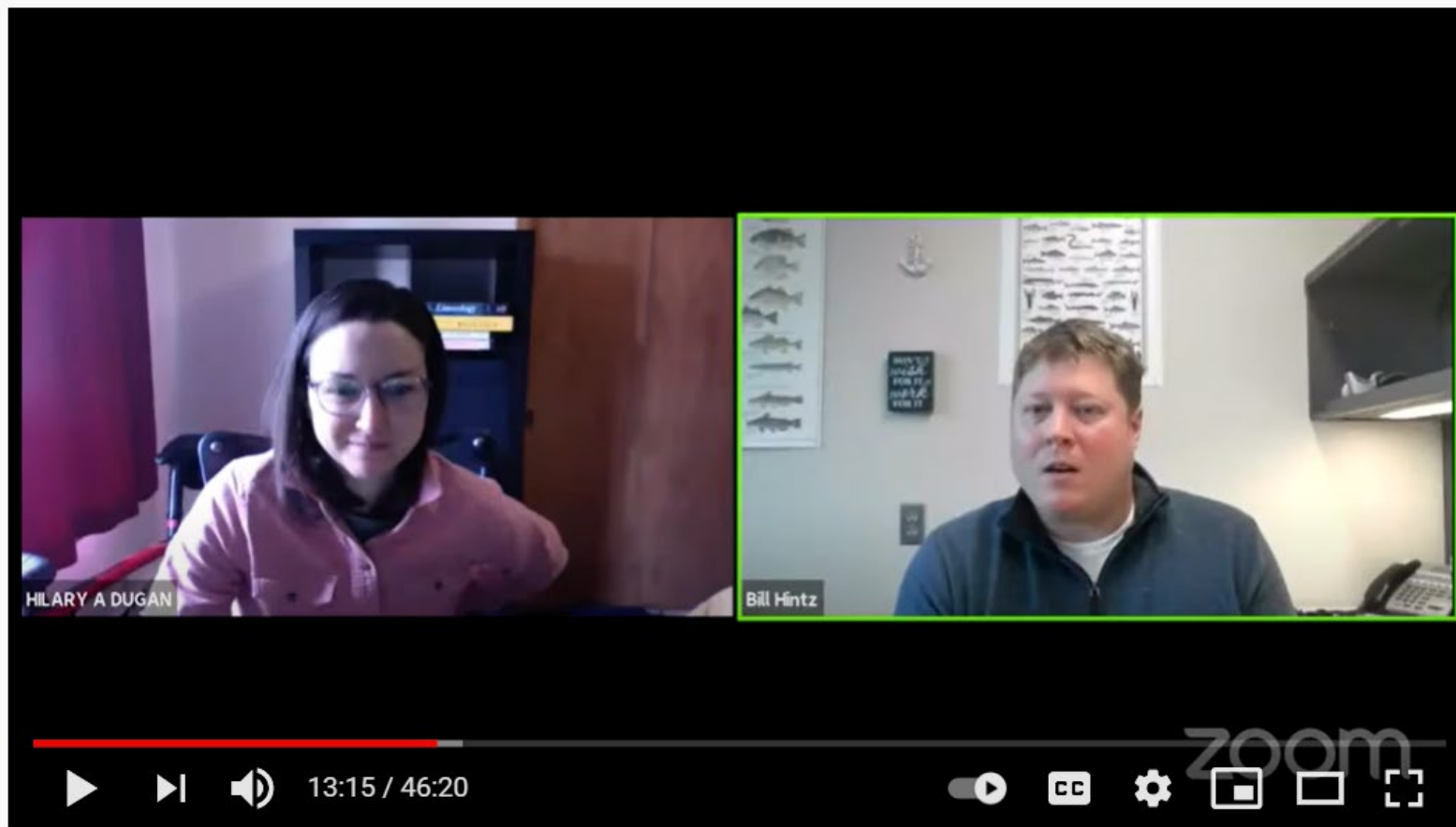
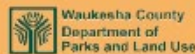
Put Your House/Business on a Low-Salt Diet

#### Friday

Success Stories From Across Wisconsin

Learn more at  
[WISaltWise.com](http://WISaltWise.com)

Sponsored by

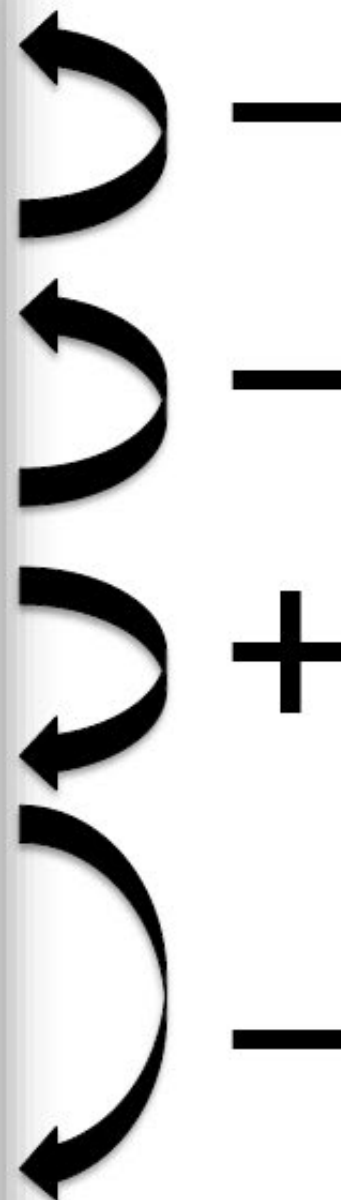
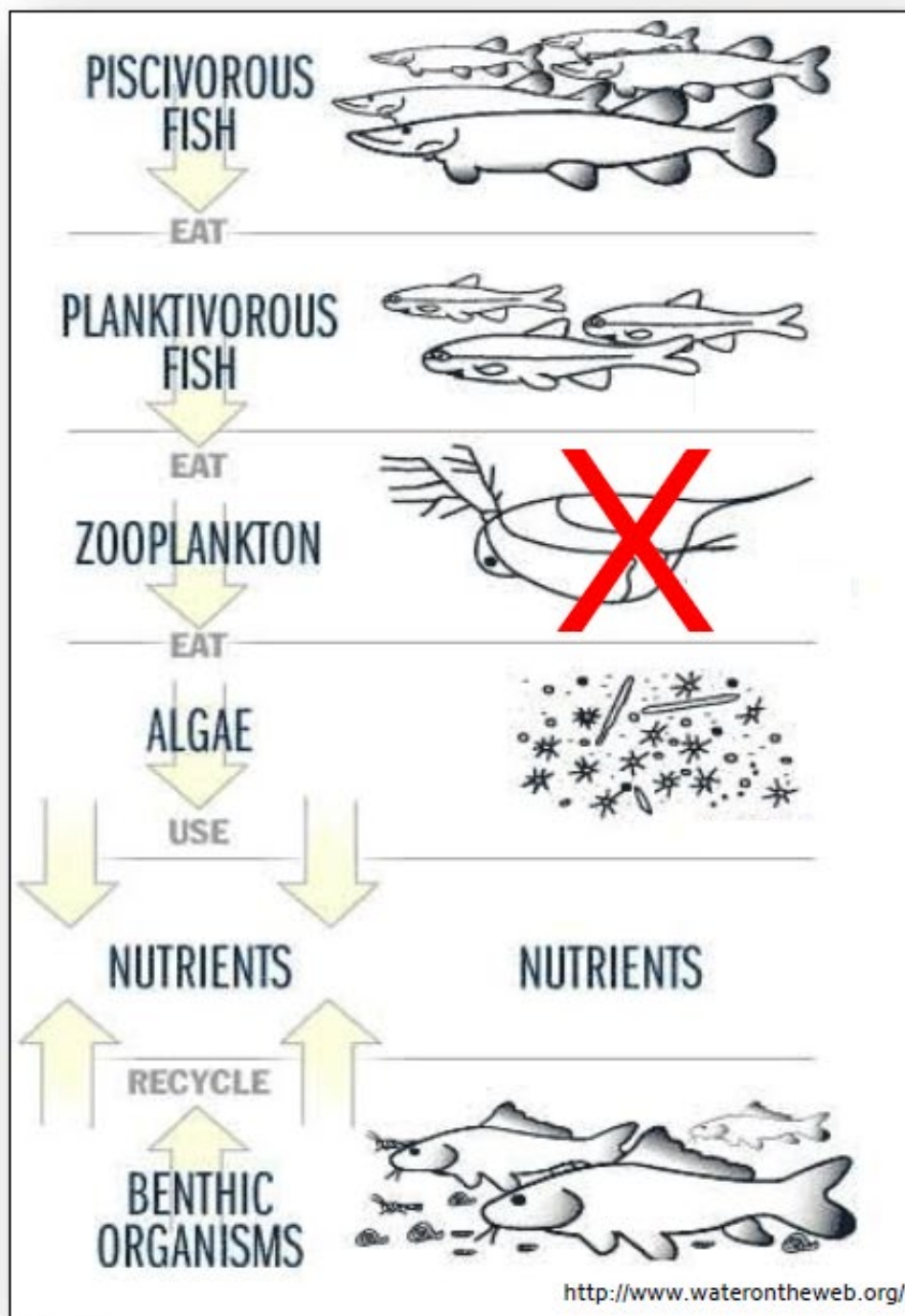


### Monday: Streams and Formerly Freshwater Lakes

448 views • Streamed live on Jan 11, 2021

👍 13    💬 0    ➦ SHARE    ≡+ SAVE    ...







# Art Bcycle





# Presentation in the Park, Lussier Family Heritage Center

“I really enjoyed your talk – it’s got me totally rethinking what I’ll do for my talk. Your teaching experience really shows through – you are so engaging!”

- Kathy Kuntz









# #saltwiseshoutout

WI Salt Wise @WISaltWise · Jan 25

#saltwiseshoutout to @HoChunkMadison. They cut winter salt use by 70% through incorporation of brine for anti-icing (#lovethelines) and a focus on mechanical removal. Way to track salt use and be leaders in the work to #keepfreshwaterfresh! @HoChunkNationPR



After attending a WI Salt Wise training, Ho-Chunk Gaming Madison embraced mechanical removal via plows and brooms and incorporated brine for anti-icing, resulting in a 70% reduction in salt use.

**Jon Warner**  
**Business Development Manager**  
**Ho-Chunk Gaming Madison**



"Every employee that is responsible for snow/ice fighting operations has been certified in the Salt Wise program. We have upfitted every patrol truck with a closed loop system which helps calibrate the amount of salt we put down per lane mile. Working with our vendor and getting the proper training, with a combined effort by the crew members and mechanics, we have been able to **reduce our salt use by 50% over the past 3 years. Our data shows we average 23 ton per event, while in 2017 we were averaging 46 ton per event.**"

Brad Hopwood, Operations Manager



# Upcoming Opportunities and Happenings

- Certify Streets, Parks, and Contracted Crews
  - Free 4-5-hour virtual (and in-person) trainings in 2021
    - August-November classes ([wisaltwise.com](http://wisaltwise.com))



## Smart Salting for Parking Lots and Sidewalks Virtual Workshop

We rely on salt to keep our roads safe in the winter but using more salt than is needed comes with a heavy price. Chloride from salt is infiltrating into our lakes, streams and groundwater. Learn more about #thetruecostofsalt and how you can make a difference at one of these free, virtual workshops.

**We need YOU to help keep WI freshwater fresh!**

August 11  
August 24

September 16  
October 28

"The class was very good. I learned more than I expected considering my 30+ years in snow removal. Nice job to all involved. I wish this was a mandatory class for all commercial operators and municipalities.  
Thank you!" ~ 2020 Participant

**8am-12pm - Register at [wisaltwise.com](http://wisaltwise.com)**



## Smart Salting for WI Roads Virtual Workshop

We rely on salt to keep our roads safe in the winter but using more salt than is needed comes with a heavy price. Chloride from salt is infiltrating into our lakes, streams and groundwater. Learn more about #thetruecostofsalt and how you can make a difference at one of these free workshops.

**YOU to help keep WI freshwater fresh!**

August 10  
September 15  
October 26

"The class was very good. I learned more than I expected considering my 30+ years in snow removal. Nice job to all involved. I wish this was a mandatory class for all commercial operators and municipalities.  
Thank you!" ~ 2020 Participant

**8am-1pm - Register at [wisaltwise.com](http://wisaltwise.com)**





# Upcoming Opportunities and Happenings

- Certify Streets, Parks, and Contracted Crews
  - Free 4.5-hour virtual (and in-person) trainings in 2021
    - August-November classes ([wisaltwise.com](https://www.wisaltwise.com))
- Equipment Open Houses
  - Accelerate adoption of best practices
  - Support equipment calibration





My plan for this past winter was to reduce our salt usage, which; I believe I achieved this feat.

Since I started applying brine before snow events, I have literally not had to spread salt. So, of the nine yards of pre-treated salt acquired, I have roughly four, possibly five yards left.

With that being said, I called Keleny and they would take the unused treated salt back and give us a credit for our salt purchase next year. Win-win.

Mission Accomplished.

- Keven Kramer, Forest Products Lab





# Upcoming Opportunities and Happenings

- Certify Streets, Parks, and Contracted Crews
  - Free 4.5-hour virtual (and in-person) trainings in 2021
    - August-November classes ([wisaltwise.com](http://wisaltwise.com))
- Equipment Open Houses
  - Accelerate adoption of best practices
  - Support equipment calibration
- Public Outreach: Spread the word!
  - Salt Wise Wednesday Webinars
  - Salt Wise at Orton-Front
  - Salt Wise Paddles
  - Salt Wise Water Softener Buoys







Questions . .