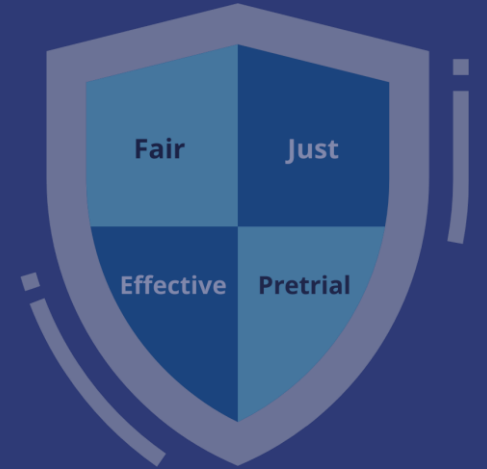


APPPR



Pathways to Pretrial Advancements

ADVANCING PRETRIAL
POLICY & RESEARCH



Center for Effective Public Policy

Faculty



Dr. Kelvin L. Banks

Associate Director
Center for Effective Public Policy (CEPP)



Jessica Ireland

Senior Manager
Center for Effective Public Policy (CEPP)

Overview: Pathways to Pretrial Advancement

What is Pathways to Pretrial Advancement?



Nationwide call for county, municipal, or tribal governments (or relevant agencies) for a 12-month engagement with APPR pretrial experts



Structured strategic planning process focused on pretrial improvements



Assess feasibility of research with support from the Wilson Sheehan Lab for Economic Opportunities (LEO)



Goal: help sites evaluate current systems and develop clear, actionable plans to improve fairness, public safety, and outcomes

Why This Opportunity Now?

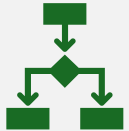


A chance to review and improve pretrial practices



Address Persistent issues:

Limited risk-based decision-making
Over-reliance on financial conditions
Limited pretrial and supportive services



Pathways supports more intentional, research-informed, and equitable pretrial decision-making

What Will Selected Sites Do?

- Over 12 months, each site will:
 - Identify critical decision points and assess current policies and practices
 - Select practical changes to enhance fairness, public safety, and effectiveness
 - Develop a detailed implementation plan with roles, timelines, and success metrics
 - Assess readiness for rigorous research with LEO's support



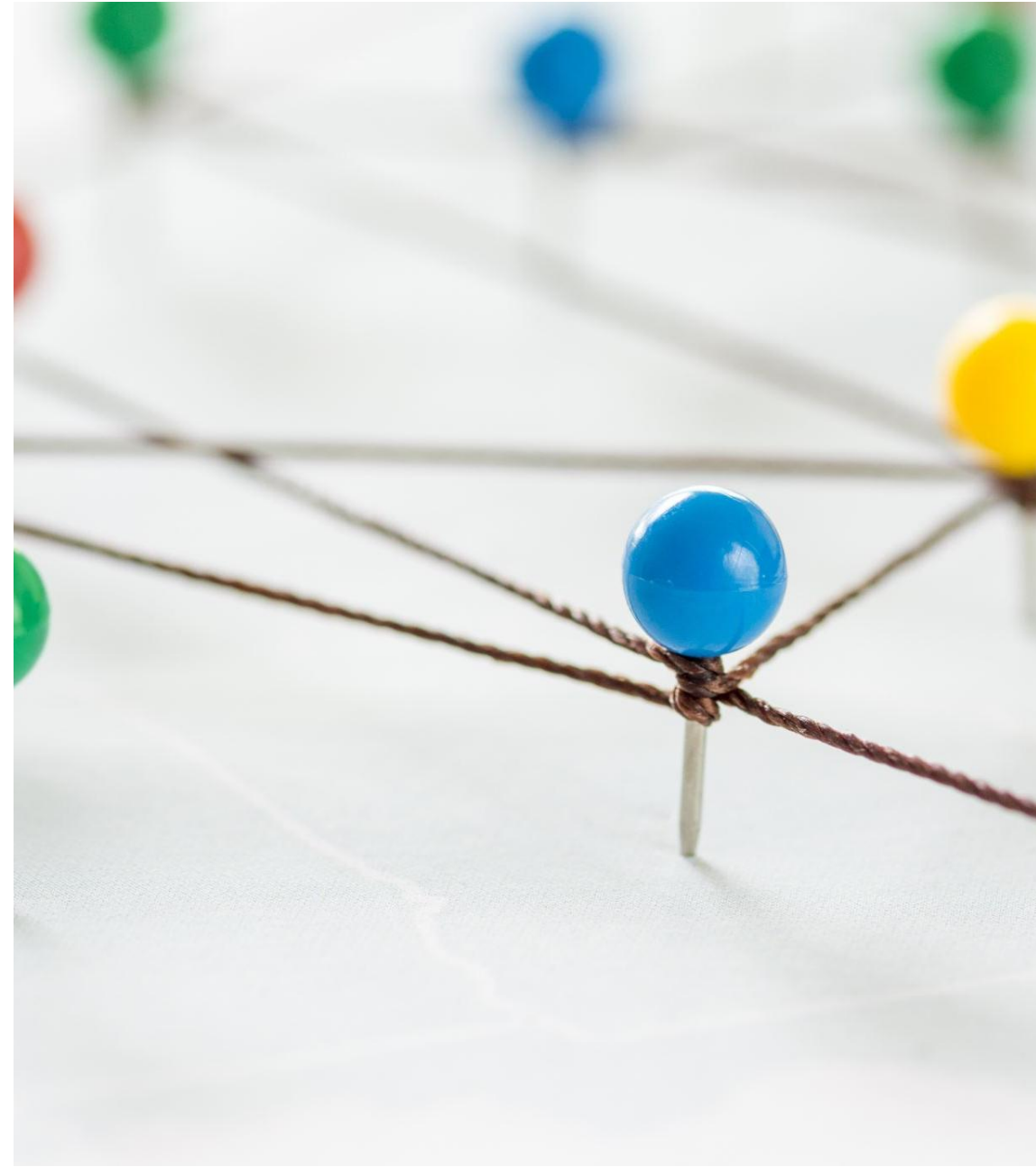
Dane County

- **Primary Focus Areas:**
 - Pretrial non-appearance
 - Diversion pathways



Examine the Current System

- Map processes from arrest through initial appearance and later stages
- Review key metrics:
 - Court appearance rates
 - Subsequent criminal activity
 - Pretrial release and detention patterns
- Conduct a jail overview: length and causes of pretrial detention
- Develop a concise report of findings and a short list of recommended improvements



Learn Best Practices

- Learn about APPR's Roadmap for Pretrial Advancement
- Take deeper dives into policies of interest
- Understand what is required for successful policy implementation
- Build a shared vocabulary across stakeholders



Prioritize and Create Implementation Plan

Prioritize Change Targets

- Use data and cross-agency dialogue to identify improvement options
- Distinguish “quick wins” from long-term initiatives
- Arrive at a clear, achievable list of policy and practice changes

Create Implementation Plan

- Assign owners and timelines
- Outline training, communications, technology, and governance



Research

Learn About Research (LEO)

- Overview of causal research and evaluation processes
- Data needs, privacy/IRB, and site readiness

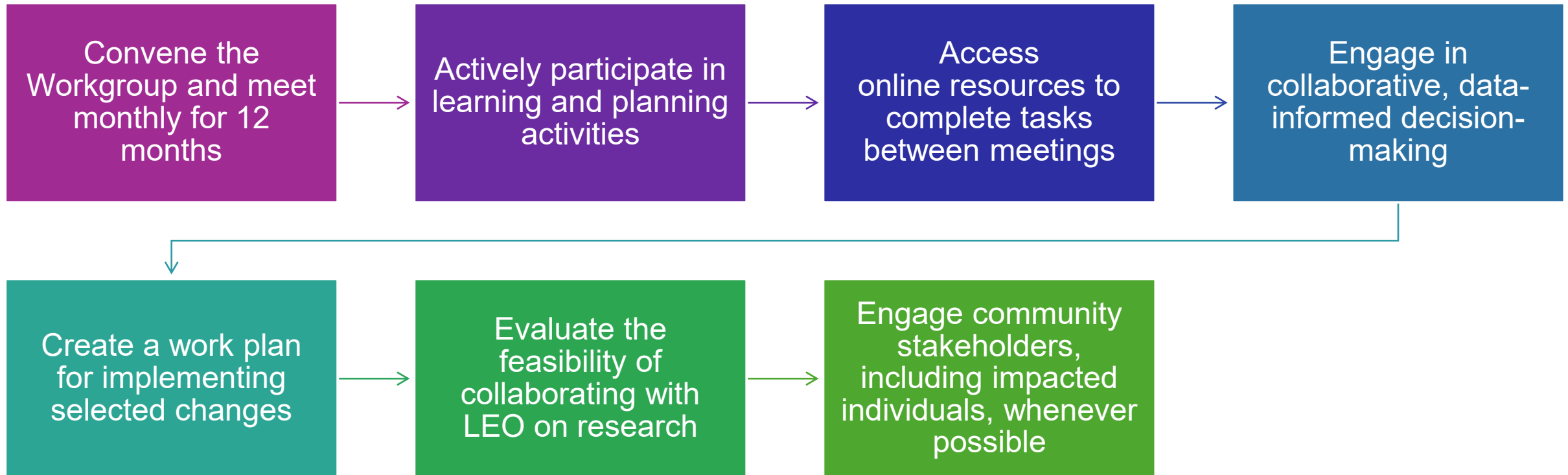
Research Plan (where feasible)

- LEO assesses for research feasibility
- If feasible, work with LEO to design a research plan that enables evaluation
- Define research questions, outcomes, and measures

Project Activities and Timeline

	Month 1	2	3	4	5	6	7	8	9	10	11	12
Phase I: Examining the Current System	Initial Planning	Establish Team Foundation Complete Jail Overview Conduct System Mapping										
Phase II: Building Knowledge and Exploring Improvements			Review of APPR Roadmap	Focus on Roadmap Policies of Interest (including best practices, relevant empirical research, and examples from the field)								
Phase III: Learning About Research				Webinar (LEO)		Follow-Up Discussions (LEO)						
Phase IV: Prioritizing Improvements						Analyze Jail Overview and System Map	Agree on Specific Improvements (including exploring the feasibility of implementation)					
Phase V: Preparing for Implementation											Develop Action Plan	
Phase VI: Developing a Research Plan								Explore Research Feasibility (LEO)			Develop Research Plan (LEO)	
Workgroup Meetings		Site Visit	Virtual	Virtual	1 Month Site Visit / 1 Month Virtual		Virtual	Virtual	Virtual	1 Month Site Visit / 2 Months Virtual		

Expectations for Participation



WHY PARTNER WITH LEO



Impact starts with knowing. Evidence-based solutions provide better insight and actionable steps for fighting poverty. The more we know, the better our impact.



Our research is free. We don't charge our partners a fee for our work.



More evidence = more money. Today's philanthropists care about impact on people's lives. Being able to prove this impact with evidence helps our partners raise more money to support their poverty-fighting missions.



Our research is a third-party validation of impact. Evidence speaks for itself. Many social service leaders, staff, and supporters welcome independent confirmation of the agency's impact. Third-party validation is critical to creating continuous improvement and attracting future investment.



Any Questions?



Contact Us



Dr. Kelvin L. Banks

KBanks@cepp.com



Jessica Ireland

jireland@cepp.com