

DRIFTLESS AREA LAND CONSERVANCY

Conservation - Care - Connection

Preserving and restoring Southwest Wisconsin's natural and agricultural heritage through permanent land protection and restoration that connects people to the land and to each other.

Counties served by DALC: **D**ane, **A**ppleton, **L**ancaster, **C**rawford, **D**odge, **E**au Claire, **L**afayette, **M**adison, **S**auk, **S**ullivan, **W**ashington, **W**aukesha, **W**isconsin.

Legend:
 ● DALC Owned Property
 ○ Conservation Easement
 ● Assist

Projects shown:
 Morrison Preserve
 Iowa County Farm
 Sardeson Preserve
 Driftless Trail
 Workshops & Events
 Wild Oaks Preserve
 Erickson Wetlands

SOUTHERN DRIFTLESS GRASSLANDS

BECAUSE GRASS IS GOOD

Partners include:
 Prairie Enthusiasts, The Nature Conservancy, American Bird Conservancy, Wisconsin DNR, Wisconsin Dept. of Natural Resources, Wisconsin Farmers Union, Land & Water Resources Department, Iowa County, etc.

SOUTHERN DRIFTLESS GRASSLANDS

BECAUSE GRASS IS GOOD

Southern Driftless Grasslands Partnership Geography

Legend:
 ● Southern Driftless Grasslands Partnership Geography
 ○ WDNR Southwest Grasslands & Streams Conservation Area Acquisition Boundary
 □ Southern Driftless Grasslands Focal Areas
 □ Wisconsin Wildlife Action Plan Conservation Opportunity Area
 □ Bird Conservation Area Core
 □ Bird Conservation Area
 □ Prairie Remnant
 □ Class 1 Trout Streams
 □ Protected Land - Fee
 □ Conservation Easement

Conservation Areas:
 - Barabens Bird Conservation Area
 - Military Ridge Prairie Burleigh Bird Conservation Area
 - Carleton Cross Bird Conservation Area
 - Perry-Primm Bird Conservation Area

Ecological Landscapes of Wisconsin

VERY high diversity of habitat types in Western Dane County where 4 ecological landscapes meet ©

Landscapes shown:
 Superior Coastal Plain, Northwest Lowlands, Northern Highland, Forest Transition, Western Glades and Palms, Central Sand Plains, Central Sand Hills, Southeast Savanna, Prairie Remnant, Mt. Pleasant, Savanna, Prairie-Moraine County Park, Trout Stream, MRPHA, Thorny Pear Cactus, Wild Oaks Preserve, Thompson Memorial Prairie, MRPHA.

Southern Driftless Grasslands Partnership Geography

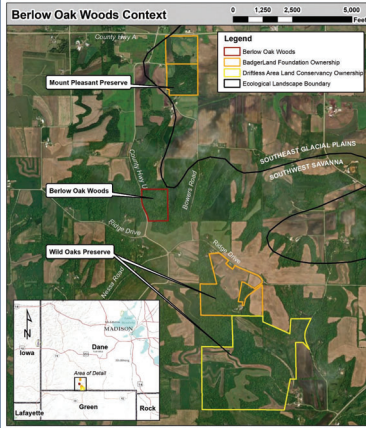
Legend:
 ● Conservation Fund Grant Sought
 □ Protected - Fee Title
 □ Conservation Easement
 □ Class 1 Trout Streams
 □ Bird Conservation Area Core
 □ Bird Conservation Area Perimeter
 □ Southern Driftless Grasslands Focal Area and WI Wildlife Action Plan Conservation Opportunity Area
 □ DNR Southwest Grasslands & Streams Conservation Area
 □ Township Boundaries
 □ Ecological Landscape Boundary

Conservation Areas:
 - Military Ridge Prairie Burleigh Area (BCA)
 - Perry-Primm Bird Conservation Area (BCA)
 - Barlow Oak Woods

INCREDIBLE DIVERSITY IN THIS NEIGHBORHOOD OF PRESERVES!

Numerous natural communities identified as "major" conservation opportunities in the Wisconsin Wildlife Action Plan for Southwest Savanna & Southeast Glacial Plains Landscapes are found here:

- Prairies (dry, dry-mesic, mesic, etc.)
- Dry cliffs
- Surrogate Grasslands
- Oak Openings/Savannas
- Oak Woodlands
- Southern Dry & Dry-Mesic Forest
- Southern Sedge Meadow
- Calcareous Fen
- Springs and Spring Runs

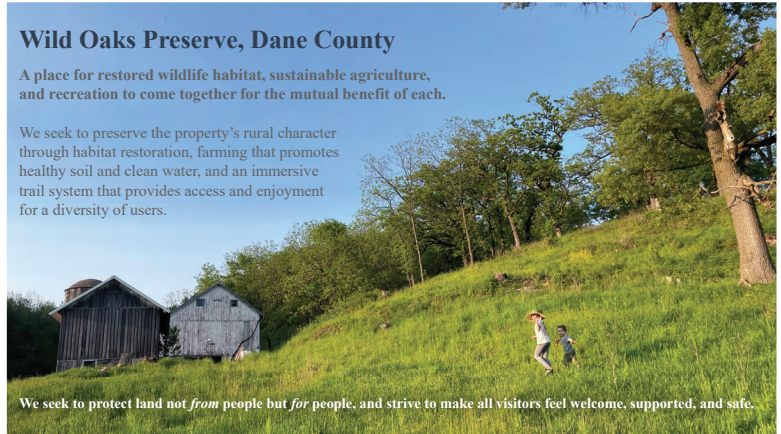


Wild Oaks Preserve, Dane County

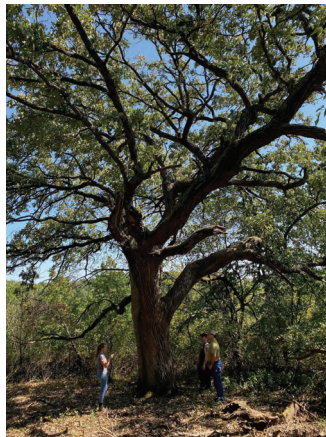
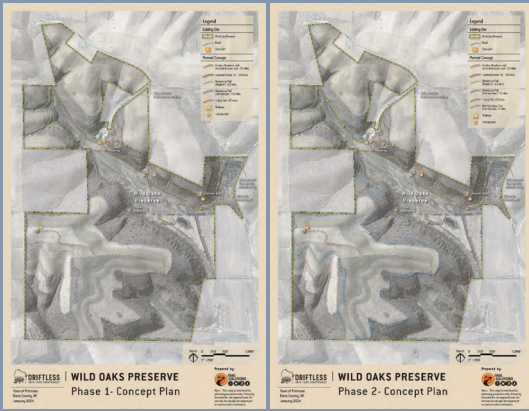
A place for restored wildlife habitat, sustainable agriculture, and recreation to come together for the mutual benefit of each.

We seek to preserve the property's rural character through habitat restoration, farming that promotes healthy soil and clean water, and an immersive trail system that provides access and enjoyment for a diversity of users.

We seek to protect land *not from* people but *for* people, and strive to make all visitors feel welcome, supported, and safe.



Wild Oaks Preserve Educational & Recreational Opportunities



Woody Clearing Underway
Summer 2021

10 Days Post Fire
April 18, 2023

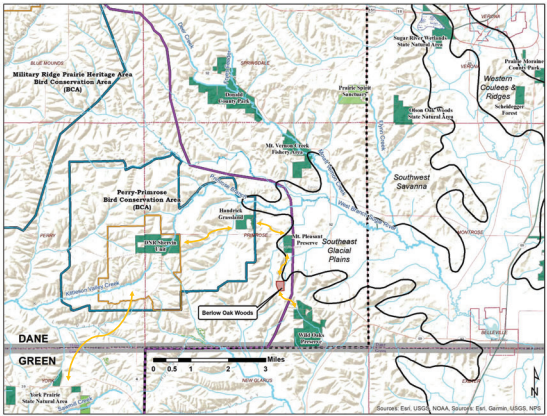


Remnant Prairie Before Woody Clearing
Fall 2021



Remnant Prairie 10 Days Post Fire
Spring 2023





BERLOW OAK WOODS
 31.4 acre woodland
 in early stages of
 restoration



BERLOW OAK WOODS ACQUISITION

- Site will be actively managed for wildlife habitat and public access
- Several trails exist and will be maintained/improved to prevent erosion
- Two existing pull-off parking areas will allow safe access off of County Hwy U
- \$487,000 FMV
- 50% State KNSF grant pending
- Seeking 50% Dane County Conservation Fund Grant