

Dane County Parks Transient Non-community Well Monitoring Guidance Manual



April 24, 2025

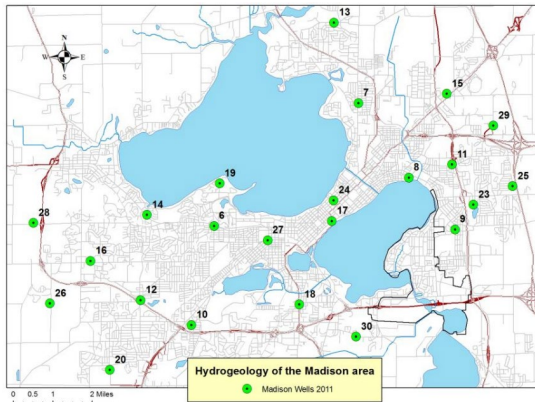
Water Supply Classifications



Community Water System

- At least 15 service connections
- At least 25 year-round residents

Example: City of Madison Wells



Non-Community

Non Transient

- At least 25 of the same people for over six months

Examples:



Business

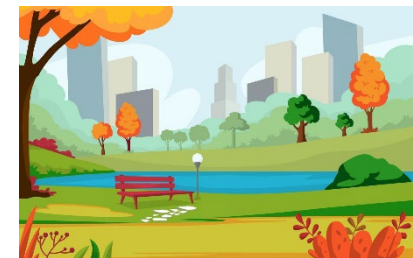
Transient

- At least 25 people for more than 60 days but not the same 25 people for over six months

Examples:



Campground

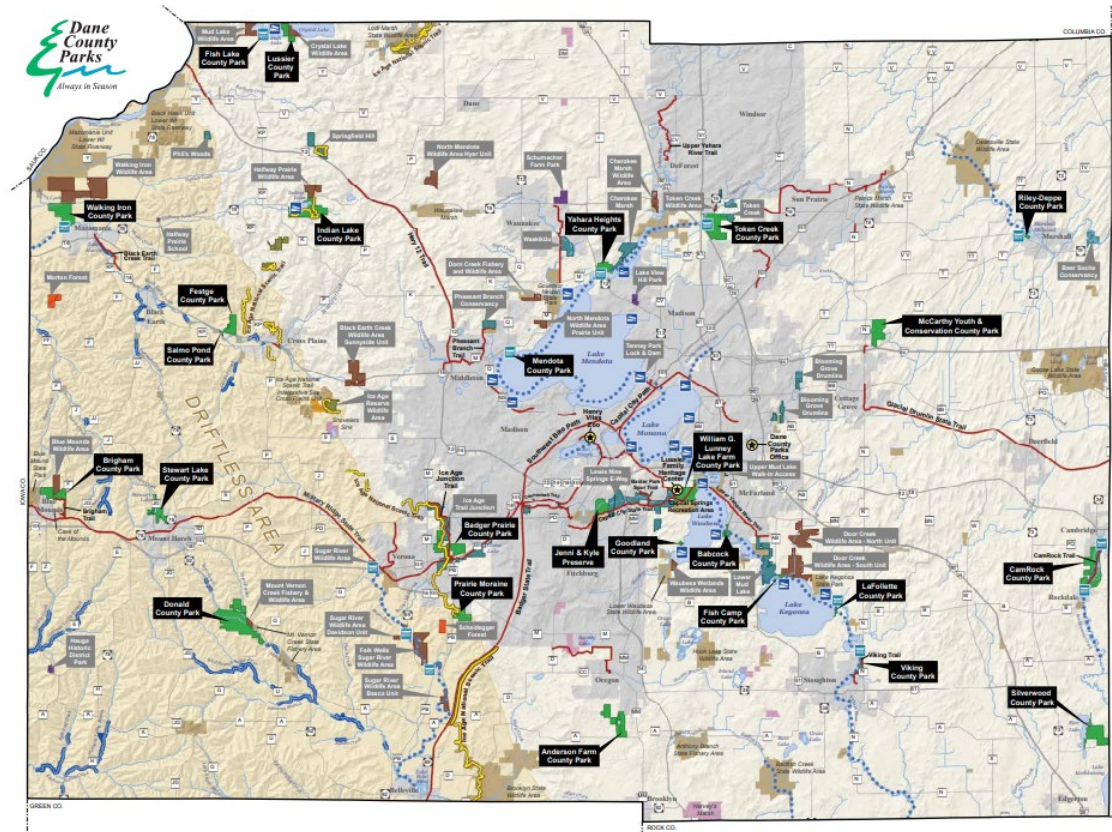


Parks

Dane County Parks

31 Wells

Babcock County Park
Badger Prairie County Park
Brigham County Park
CamRock County Park Shelter 1
CamRock County Park Shelter 2
CamRock County Park Shelter 3
Festge County Park
Fish Camp County Park
Goodland County Park
Halfway Prairie School
Indian Lake County Park
McCarthy Youth and Conservation County Park
Reddan Soccer Park (Badger Prairie County Park)
Scheidegger Forest
Schumacher Farm County Park
Silverwood County Park
Stewart Lake County Park
Token Creek County Park Campground
Token Creek County Park Group Camp
Token Creek County Park Shelter 1
Token Creek County Park Shelter 2
Token Creek County Park Shelter 3
Token Creek County Park Shelter 4
Token Creek County Park Shelter 5
WG Lunney Lake Farm County Park Boat Launch
WG Lunney Lake Farm County Park Campground
WG Lunney Lake Farm County Park Group Camp
WG Lunney Lake Farm County Park Heritage Center
WG Lunney Lake Farm County Park Shelter 1
WG Lunney Lake Farm County Park Shelter 2
WG Lunney Lake Farm County Park Shelter 3



***E. Coli* Monitoring**

- Drinking water standards (EPA & DNR) require monitoring
- Sample Collection: Prior to opening for the season
- Sample Schedule & Maximum Contaminant Level (MCL):

Water Sampling Schedule	New System	Existing System	Maximum Contaminant Level (MCL) Colony Forming Unit (CFU)
Monthly	X		0 CFU– not present
Annually		X	0 CFU– not present

- If sample tests positive:
 - Well is turned off and treated with chlorine
 - Signage is posted to provide notice to park users
 - Continue monitoring until levels drop below MCL

Nitrate/Nitrite Monitoring

- Drinking water standards (EPA & DNR) require monitoring
- Sample Collection: Prior to opening for the season
- Sample Schedule & Maximum Contaminant Level (MCL):

Water Sampling Schedule	New System	Existing System	Maximum Contaminate Level (MCL)
Annual Nitrate	X	X	10 milligrams per liter (mg/L) or 10 ppm
Nitrite N	X		1 mg/L or 1 ppm

- If sample is above MCL:
 - Well is not turned off
 - Signage is posted to provide notice to park users
 - Continue monitoring until levels drop below MCL

PFAS Monitoring

- Drinking water standards **do not** require monitoring for non-community, transient water systems
- Sample Collection: Prior to opening for the season
- Health advisory Levels (HAL) determined by Department of Health Services:

PFOA = 4 ng/L	PFNA = 10 ng/L	PFUnA = 3,000 ng/L
PFOS = 4 ng/L	PFHxS = 10 ng/L	PFBA = 10,000 ng/L
FOSA = 4 ng/L	GenX = 10 ng/L	PFTeA = 10,000 ng/L
NEtFOSA = 4 ng/L	PFDA = 300 ng/L	PFHxA = 150,000 ng/L
NEtFOSAA = 4 ng/L	PFDoA = 500 ng/L	PFODA = 400,000 ng/L
NEtFOSE = 4 ng/L	DONA = 3,000 ng/L	PFBS = 2,000 ng/L

- If sample is above HAL:
 - Well is not turned off
 - Signage is posted to provide notice to park users
 - Continue monitoring twice per season until levels drop below HAL

Public Notification

- If sample test results exceeds MCL or HAL for signage will be posted in a conspicuous location to provide notice to park users.
- Sampling test results will be posted on Dane County Parks website: Our goal is to provide current and past data online by July 1, 2025

Questions?