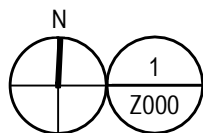
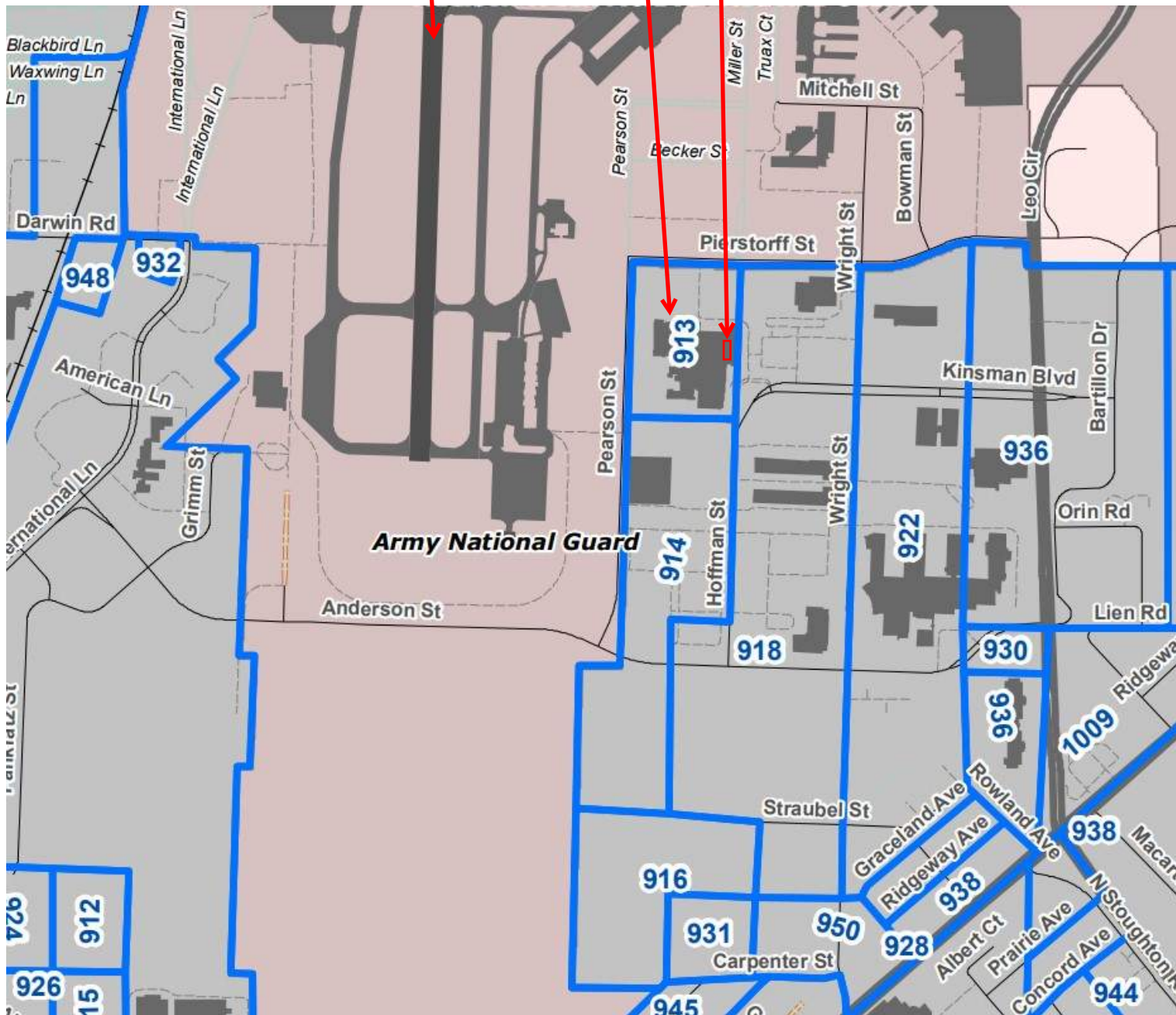


RUNWAY LABCORP MAIN BUILDING WORK ZONE



PARTIAL ORDINANCE MAP

SCALE: NTS



COPYRIGHT STRANG, INC. 2024



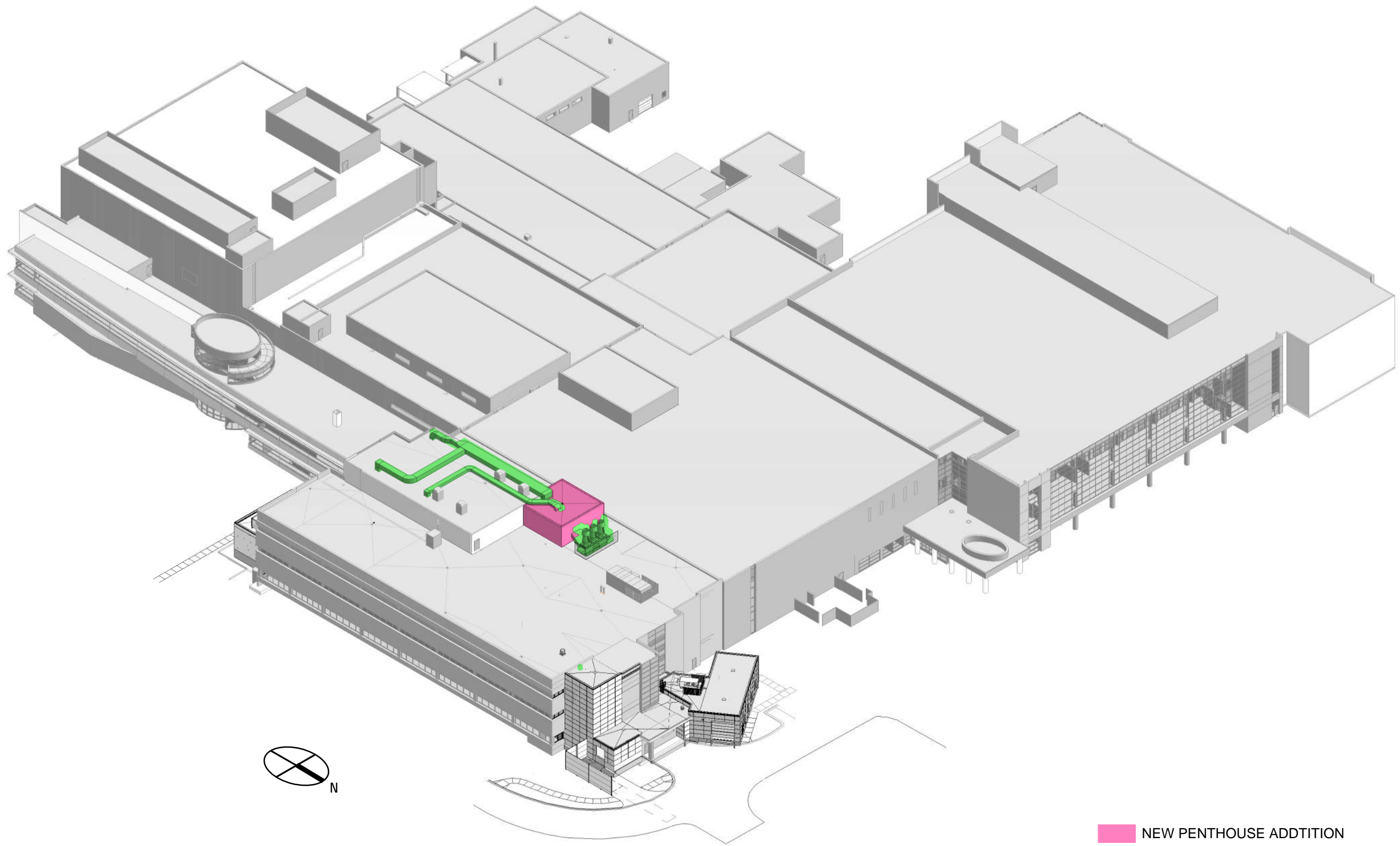
1
Z001

AERIAL VIEW FROM NORTHEAST

SCALE: NTS



COPYRIGHT STRANG, INC. 2024



- NEW PENTHOUSE ADDITION
- NEW ROOFTOP MECHANICAL

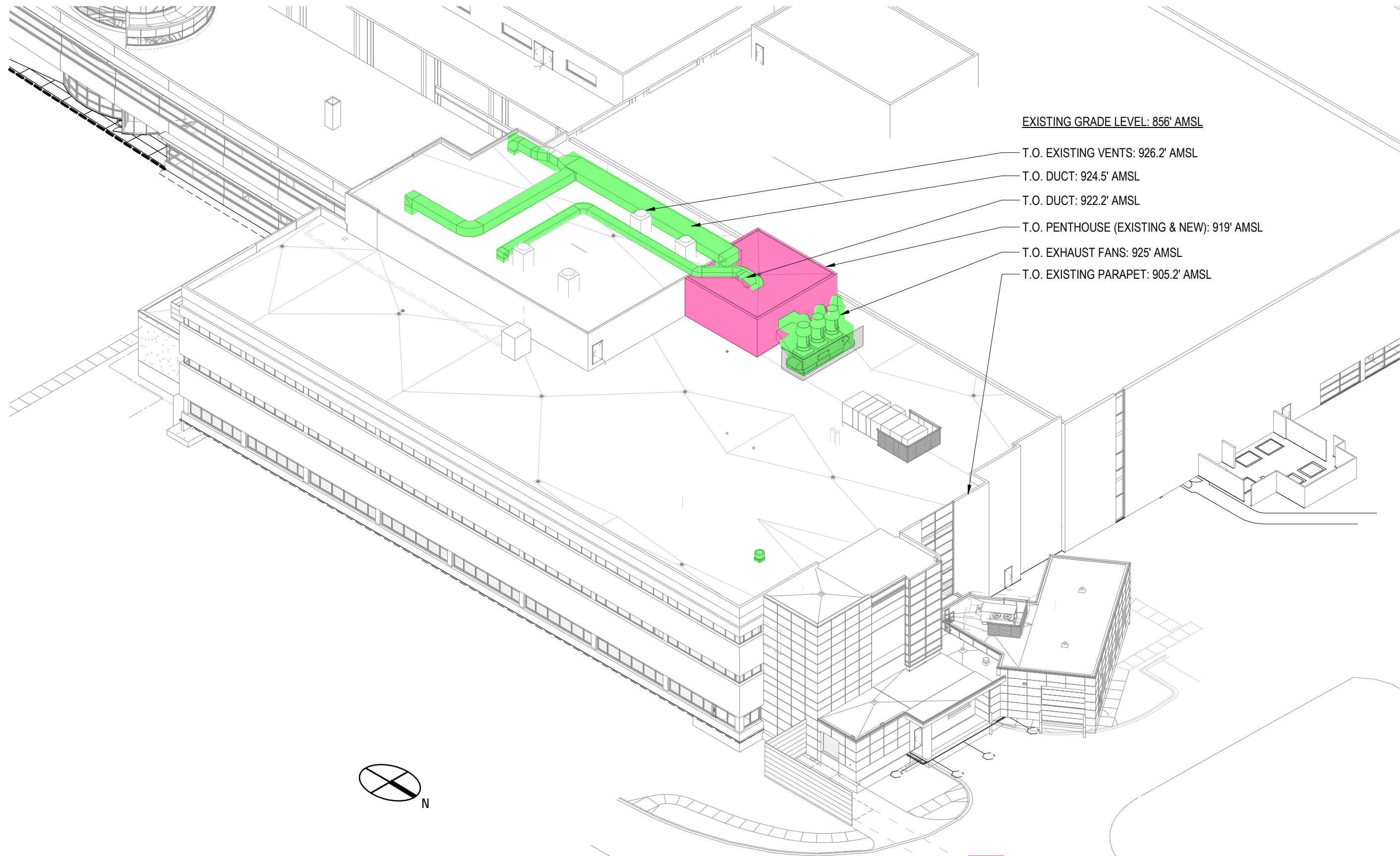
1
Z002

3D VIEW OVERALL FROM NORTHEAST

SCALE: NOT TO SCALE



COPYRIGHT STRANG, INC. 2024



1
Z003

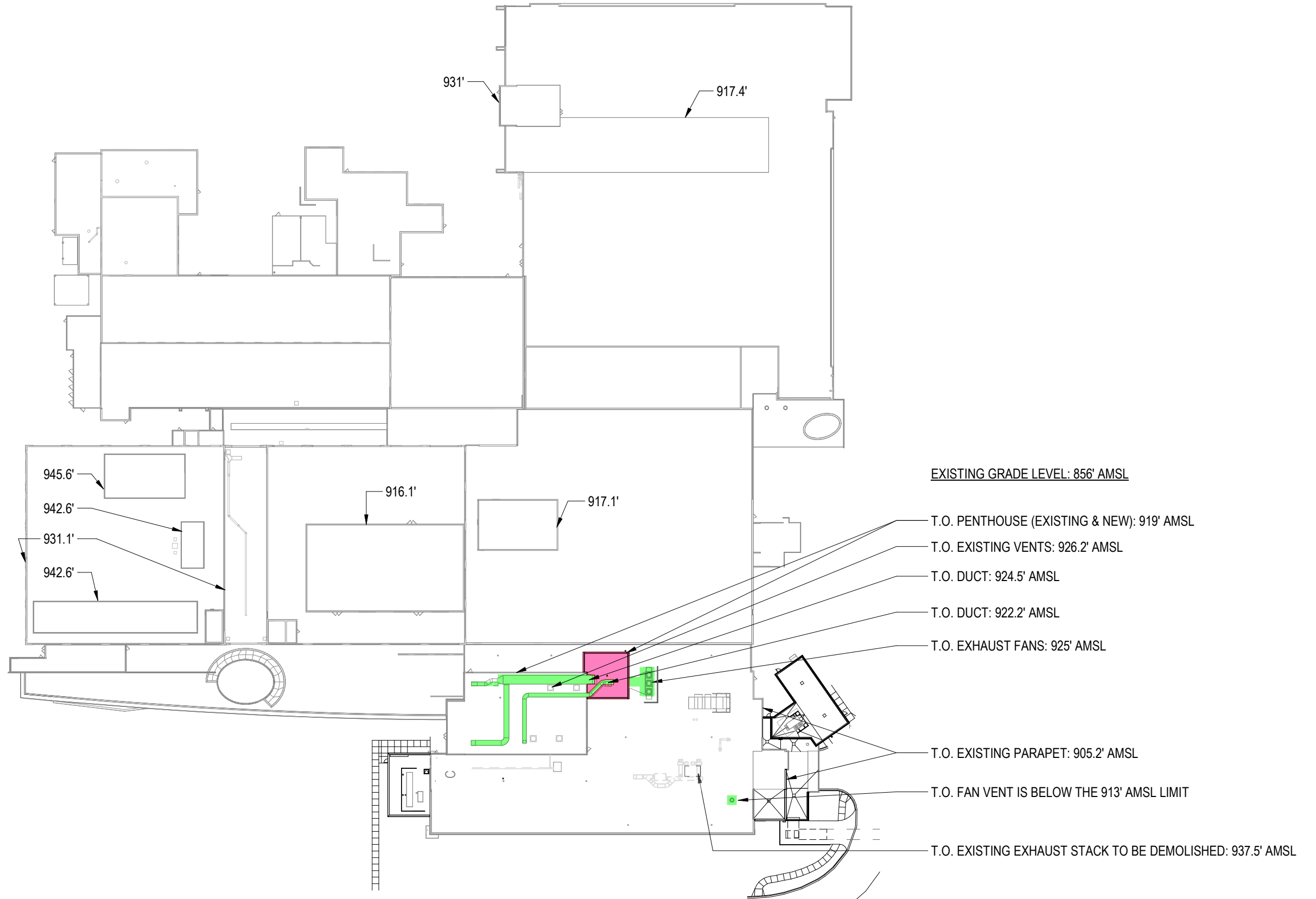
3D VIEW - NORTHEAST

SCALE: NTS

- NEW PENTHOUSE ADDITION
- NEW ROOFTOP MECHANICAL



COPYRIGHT STRANG, INC. 2024



EXISTING GRADE LEVEL: 856' AMSL

T.O. PENTHOUSE (EXISTING & NEW): 919' AMSL

T.O. EXISTING VENTS: 926.2' AMSL

T.O. DUCT: 924.5' AMSL

T.O. DUCT: 922.2' AMSL

T.O. EXHAUST FANS: 925' AMSL

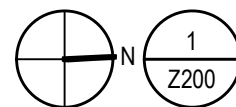
T.O. EXISTING PARAPET: 905.2' AMSL

T.O. FAN VENT IS BELOW THE 913' AMSL LIMIT

T.O. EXISTING EXHAUST STACK TO BE DEMOLISHED: 937.5' AMSL

NEW PENTHOUSE ADDITION

NEW ROOFTOP MECHANICAL

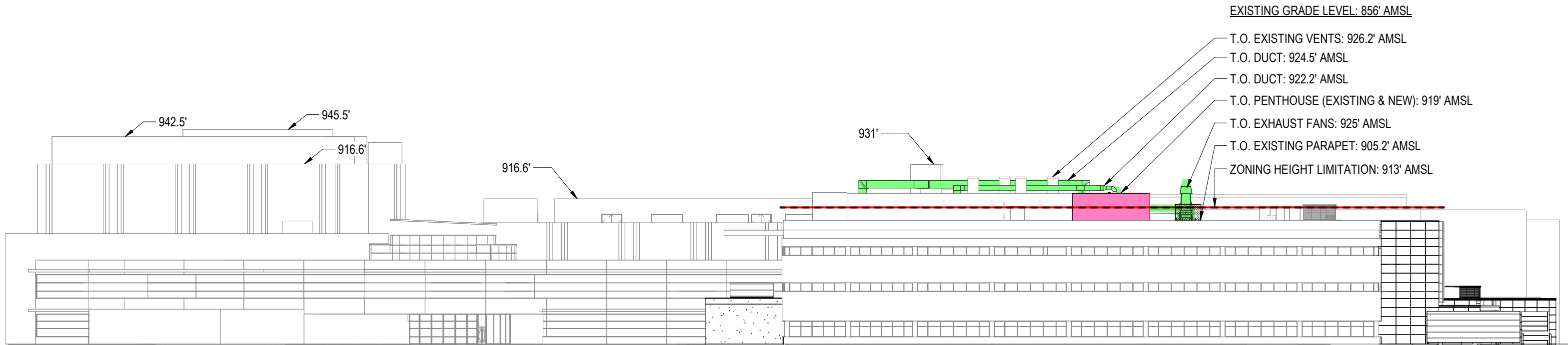


OVERALL ROOF PLAN - FAA

SCALE: 1" = 80'-0"

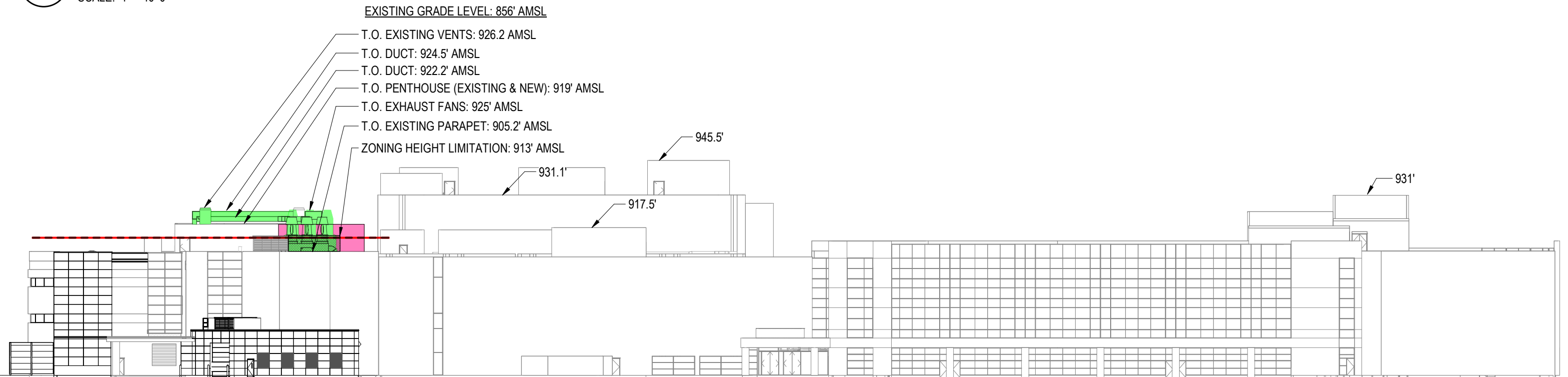


COPYRIGHT STRANG, INC. 2024



NEW PENTHOUSE ADDITION
 NEW ROOFTOP MECHANICAL

3
 Z401
OVERALL EAST ELEVATION - FAA
 SCALE: 1" = 40'-0"



NEW PENTHOUSE ADDITION
 NEW ROOFTOP MECHANICAL

1
 Z401
OVERALL NORTH ELEVATION - FAA
 SCALE: 1" = 40'-0"



COPYRIGHT STRANG, INC. 2024

EXISTING GRADE LEVEL: 856' AMSL

T.O. EXISTING VENTS: 926.2 AMSL

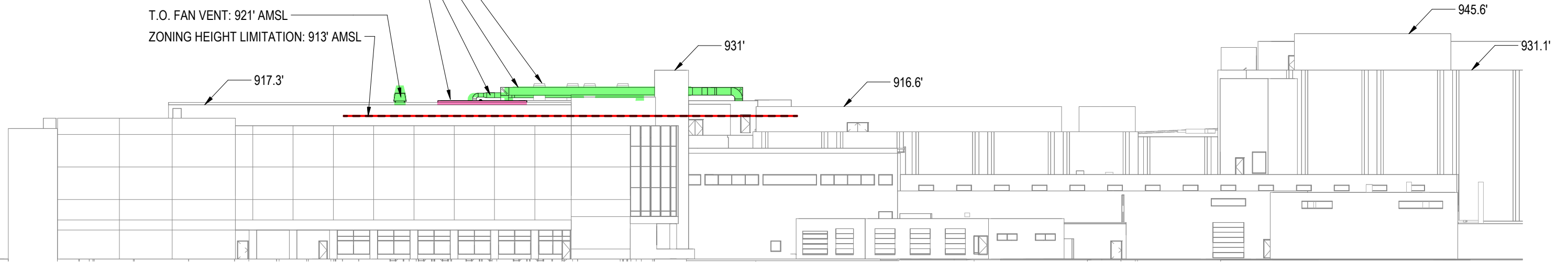
T.O. DUCT: 924.5' AMSL

T.O. DUCT: 922.2' AMSL

T.O. PENTHOUSE (EXISTING & NEW): 919' AMSL

T.O. FAN VENT: 921' AMSL

ZONING HEIGHT LIMITATION: 913' AMSL



NEW PENTHOUSE ADDITION

NEW ROOFTOP MECHANICAL

2
Z402

OVERALL WEST ELEVATION - FAA

SCALE: 1" = 40'-0"

EXISTING GRADE LEVEL: 856' AMSL

ZONING HEIGHT LIMITATION: 913' AMSL

T.O. PENTHOUSE (EXISTING & NEW): 919' AMSL

T.O. EXISTING VENTS: 926.2 AMSL

T.O. DUCT: 924.5' AMSL

T.O. EXHAUST FANS: 925' AMSL



NEW PENTHOUSE ADDITION

NEW ROOFTOP MECHANICAL

1
Z402

OVERALL SOUTH ELEVATION - FAA

SCALE: 1" = 40'-0"



COPYRIGHT STRANG, INC. 2024