



Dane County Emergency Management



Dane County Emergency Management

Mission: To support and strengthen our community to prepare for, respond to, recover from, and reduce harm from emergencies and disasters.

Vision: To promote a safer and more resilient community.

Two levels of responsibility:

- Dane County department with county, state, and federal-level responsibilities
- Support and Assistance



One Agency/Three Divisions

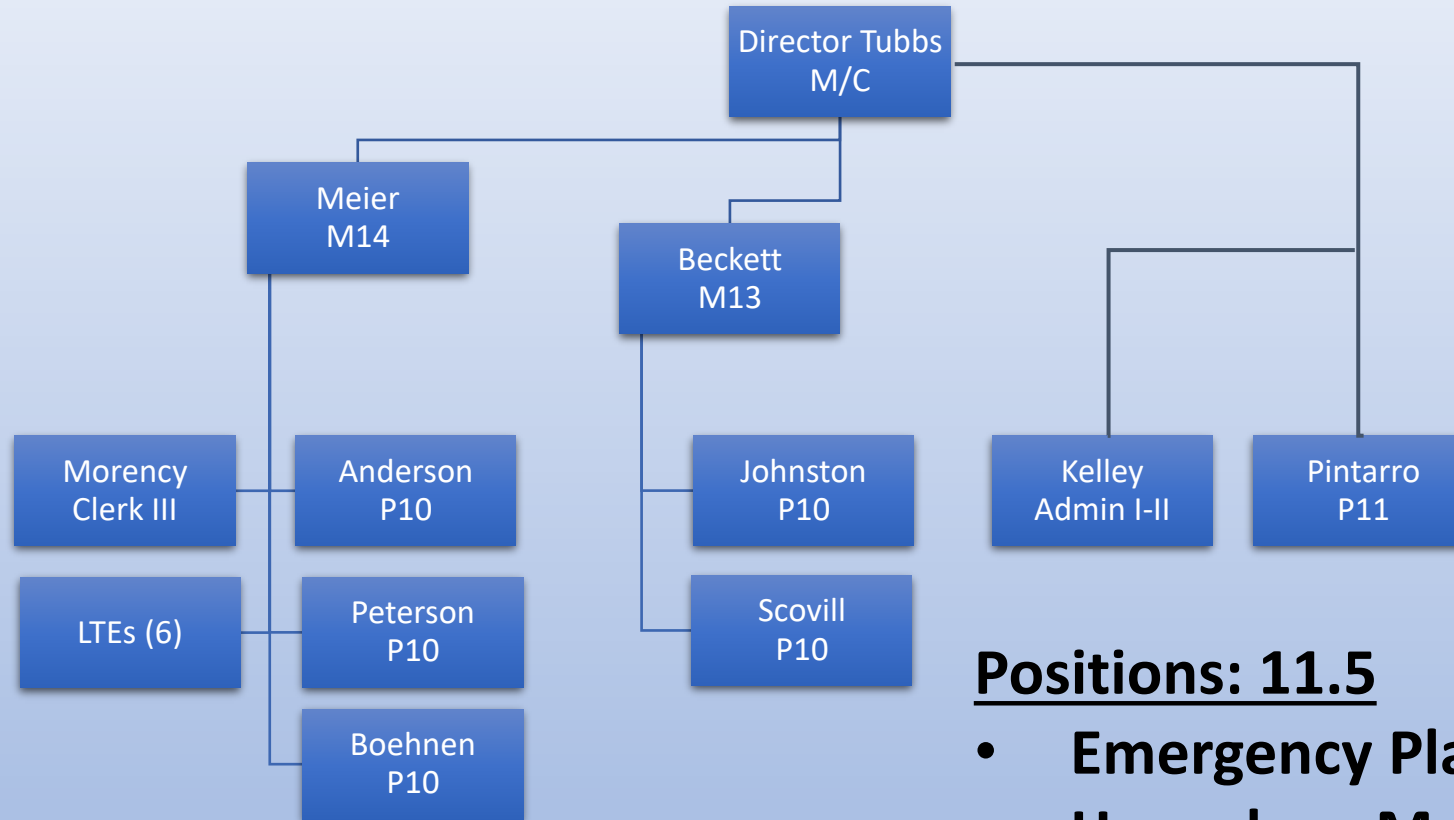
Planning Section: Works with community stakeholders to identify threats/hazards and then plans for incidents/events to achieve the EM mission.

EMS: Works with the EMS and medical providers to improve communication, establish a standard of care across agencies and ensure they work together in a seamless system.

HazMat: Works with businesses countywide to write Off-Site Response Plans to use during an incident involving extremely hazardous substances.



Dane County Emergency Management



Positions: 11.5

- **Emergency Planning: 5.5**
- **Hazardous Materials Planning: 2.0**
- **Emergency Medical Services: 4.0**

Emergency Management Funding

- **DCEM Budget at a Glance**
 - General Purpose Revenue – \$1,787,011 appropriated in 2026
 - Program Specific Revenue – \$592,974 identified in 2026
 - Expenditures – Projected at \$2,379,985 in the 2026 budget
- **EMPG (Emergency Management Performance Grant)**
 - Average award amount of this grant from 2023-2025 was \$245,226.58
 - Future of the program remains uncertain, although the federal notice of funding opportunity was just released to the state
 - Federal funds pass through Wisconsin Emergency Management, with a required full county match
- **EPCRA (Emergency Preparedness Community Right-to-Know Act)**
 - Average award amount 2023-2025 was \$123,896.05. Estimated for 2026 is \$100,813.00
 - State funded with no local match requirement
 - Directly assists with the salary of the Hazardous Materials Planner, but does not fully cover the position



Emergency Management Funding



- **Opiate Settlement Dollars**
 - Fully funds 1.0 FTE position in the department
- **Homeland Security**
 - Active Threat Exercises
- **HMEP (Hazardous Material Emergency Planning)**
 - HazMat Training & Exercises
 - Commodity Flow Study (CFS)

Emergency Management is a Cycle



Dane County Emergency Management's Approach

Integrated Preparedness Planning

2026 Identified Priorities

- Continued Municipal Collaboration Using Designated Municipal EM Liaisons
- Providing Support for Municipal Incident Response and Special Events
- ASIM (Active Shooter Incident Management) Training
- Support to Schools for Safety and Reunification



Dane County Stands Ready

- Duty Officer Protocol
- EMS Countywide Support System
- SWIMT Coordination
- Resource Ready
- Hot EOC
- Amateur Radio Emergency Services Support (Skywarn)



Community Liaison Partners

- 911
- Law Enforcement
- Fire
- EMS
- Public Health
- Safe Communities
- Hospitals



The Opioid Epidemic
What does this mean to EMS?
Skye Tikkanen,
Safe Communities
Drug Poisoning Prevention Manager



Thursday, December 14th
1:00 pm - 3:00 pm
Verona Fire Station
101 Lincoln Ave

Register Here:
<https://www.surveymonkey.com/r/DCEMstraining>
2 hour continuing education available



Vital Partners in the EM Cycle

- **Public Private Partner (P3)**
- **Critical Infrastructure Partners: Utilities**
- **Faith-Based Communities**
- **Volunteer Organizations Active in Disasters (VOAD) and Non-government organizations (NGO)**
- **Response agencies**
- **Other County Departments and Municipal Leaders**
- **National Weather Service (NWS)**
- **Wisconsin Emergency Management (WEM)**
- **Federal Emergency Management Agency (FEMA)**
- **The Whole Community**



Resource Support

CV1

- Mobile command post/unified command
- Multi-discipline and multi-jurisdictional operations team
- 24/7 availability
- Robust communications capabilities



Resource Support

- Bariatric Ambulance (Rescue 30)
- Basic Ambulance (Rescue 31)
- UTV



Resource Support

Drone Support

- Damage assessment, Search and Rescue (SAR), Forward-looking Infrared (FLIR), other responder support
- Three sizes available
- Air Coordination Group and the Wisconsin Drone Network
- Weather-sensitive

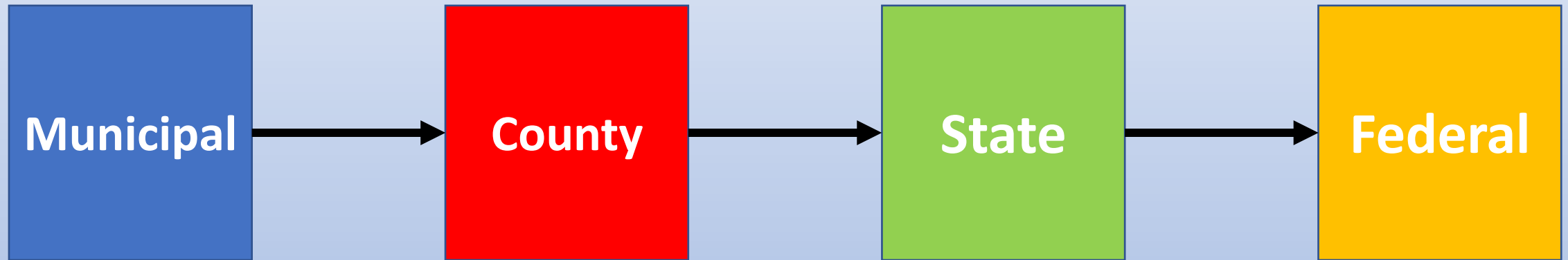


Flood Control Assistance

- Sandbagging machine,
 - Bags 1,000 per bundle for Local governments only
 - Municipality supplies DRY sand, bagging crews, fuel
- Pumps – (4 inch) with suction/discharge hose
- WIPP Barrier (Water-Inflated Property Protector)
Water-filled flood barrier



Every response begins and ends at the local level...



...and expands based on the needs of the situation



Dane County Emergency Operations Center (EOC)

- A physical or virtual location where individuals assume an Incident Command System (ICS) role to support and manage the needs of the incident
- What do you do in an EOC?
 - Build and maintain situational awareness
 - Collect, analyze, and verify information
 - Support the needs of the incident



Emergency Planning and Community Right-to-Know Act (EPCRA)

- Tier II Reporting
 - Hazardous Chemicals over 10,000 pounds
 - Just under 600 Reporting Facilities
- Planning Facilities
 - Extremely Hazardous Substances (EHS) over Threshold Planning Quantities (TPQ)
 - 189 Planning Facilities in Dane County
- Commodity Flow
 - 3,500 miles of Highway in Dane County
 - Railroads
 - Pipelines



Emergency Medical System (EMS) Support



- Training and Education
- Protocol and Procedures
- Equipment and Supplies
 - R30 (Bariatric) and R31 (Basic)
 - Medication Vending
 - Mass Casualty Planning and Support
 - Standardized Patient Reporting and Data Collection
- Harm Reduction and Opiate Prevention

DCEM Outreach Efforts

- **School Safety**
 - **Public Safety SRM/SRP (Standard Reunification Method/Standard Response Protocol)**
 - **Ongoing ASIM Training & Exercise**
- **Protecting Places of Worship Workshop**
- **National Night Out/Community events**
- **Safety Saturday**
- **National Weather Service storm spotter training**
- **Public education campaigns and social media outreach**

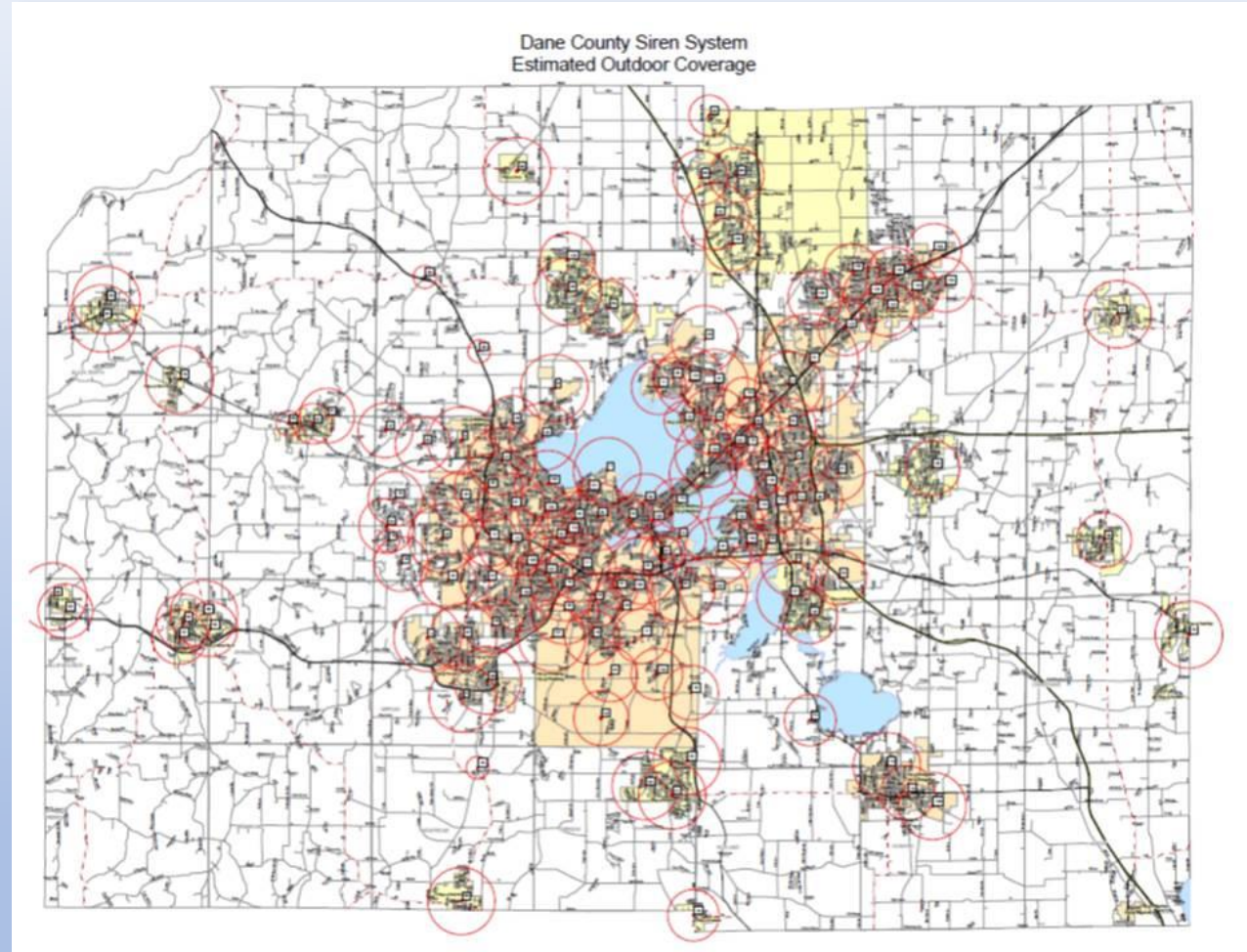


Natural Hazard Mitigation Plan Update

- A FEMA approved document that encapsulates descriptions of natural hazards that affect Dane County, their effects on residents, and strategies that can reduce the risks from these hazards.
- Updated every 5 years. Current plan expires in 2027.
- Must be adopted by the Dane County Board and participating municipalities in order to qualify for mitigation-related grant programs.



Outdoor Warning Sirens



Dane County Emergency Notification System Wireless Emergency Alerts (WEA/IPAWS)

Dane County Emergency Notifications

- Opt-in System
- Cell phone and email
- Sent by DCEM
- Notify of common hazards

Wireless Emergency Alerts

- Most smart phones enabled
- Based on proximity to towers
- Only sent when life/safety in danger



PulsePoint

LEARN CPR. GET THE APP. SAVE A LIFE.

WHOSE HEART WILL YOU SAVE?



PulsePoint



Thank You!

“The only thing more difficult than preparing for disasters is explaining why you didn’t!”

Dr. Rex Archer, Kansas City, MO Public Health Director



Questions?

Charles Tubbs - Director
tubbs.charles@danecounty.gov
608-267-1591

Carrie Meier – Assistant Director
meier.carrie@danecounty.gov
608-444-4827

Andrew Beckett – Outreach and Communications Manager
beckett.andrew@danecounty.gov
608-261-9943

<https://em.countyofdane.com/>

