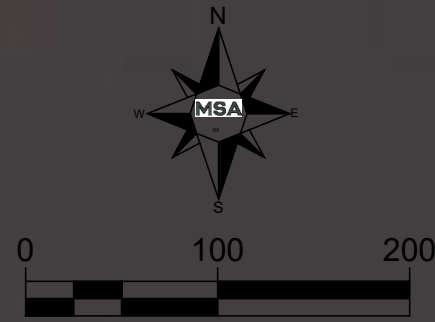




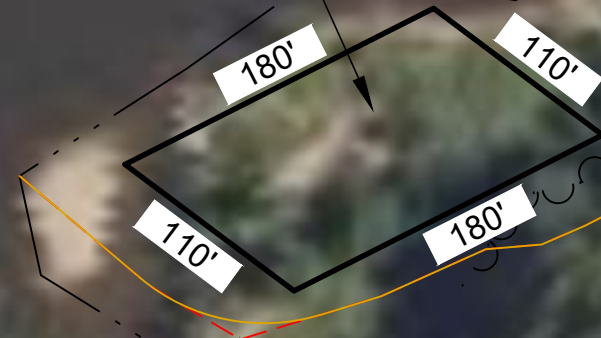
ENGINEERING | ARCHITECTURE | SURVEYING
 FUNDING | PLANNING | ENVIRONMENTAL
 1702 Pankratz St Madison, WI 53704
 (608) 242-7779 www.msa-ps.com
© MSA Professional Services, Inc.

WISCONSIN RIVER PEDESTRIAN BRIDGE CROSSING
 CONSTRUCTION ACCESS EASEMENT EXHIBIT
 DANE COUNTY, WISCONSIN

MSA FILE #19234007
 SHEET 1 OF 3



SOIL STORAGE &
EQUIPMENT
STAGING AREA
AREA = 0.41 ACRES



TREELINE

APPX. EDGE OF
WATER

ONSITE MEETING SURVEYED
EASEMENT CENTERLINE

ONSITE MEETING SURVEYED
EASEMENT CENTERLINE

RECOMMENDED 30' WIDE ACCESS
EASEMENT CENTERLINE

LANDS DESCRIBED IN
DEED #5389887 AND AS
SHOWN ON WESTBROOK
ENGINEERS (LOGAN)
1999 PLAT OF SURVEY

PROPERTY
LINE

ONSITE MEETING SURVEYED
EASEMENT CENTERLINE



ENGINEERING | ARCHITECTURE | SURVEYING
FUNDING | PLANNING | ENVIRONMENTAL
1702 Pankratz St Madison, WI 53704
(608) 242-7779 www.msa-ps.com
© MSA Professional Services, Inc.

WISCONSIN RIVER PEDESTRIAN BRIDGE CROSSING
CONSTRUCTION ACCESS EASEMENT EXHIBIT
DANE COUNTY, WISCONSIN

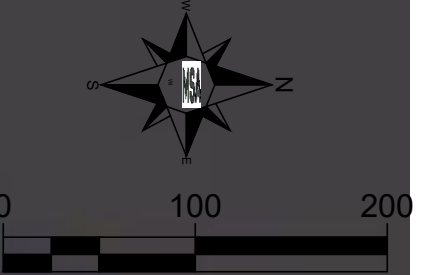
MSA FILE #19234007
SHEET 2 OF 3



TREELINE

ONSITE MEETING SURVEYED
EASEMENT CENTERLINE

APPX. EDGE OF
WATER



RECOMMENDED 30' WIDE ACCESS
EASEMENT CENTERLINE

PROPERTY
LINE

ONSITE MEETING SURVEYED
EASEMENT CENTERLINE

PROPERTY
LINE

TREELINE

LANDS DESCRIBED IN
DEED #5389887 AND AS
SHOWN ON WESTBROOK
ENGINEERS (LOGAN)
1999 PLAT OF SURVEY

PROPERTY
LINE



ENGINEERING | ARCHITECTURE | SURVEYING
FUNDING | PLANNING | ENVIRONMENTAL
1702 Pankratz St Madison, WI 53704
(608) 242-7779 www.msa-ps.com
© MSA Professional Services, Inc.

WISCONSIN RIVER PEDESTRIAN BRIDGE CROSSING
CONSTRUCTION ACCESS EASEMENT EXHIBIT
DANE COUNTY, WISCONSIN

MSA FILE #19234007
SHEET 3 OF 3