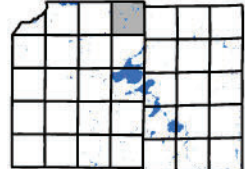
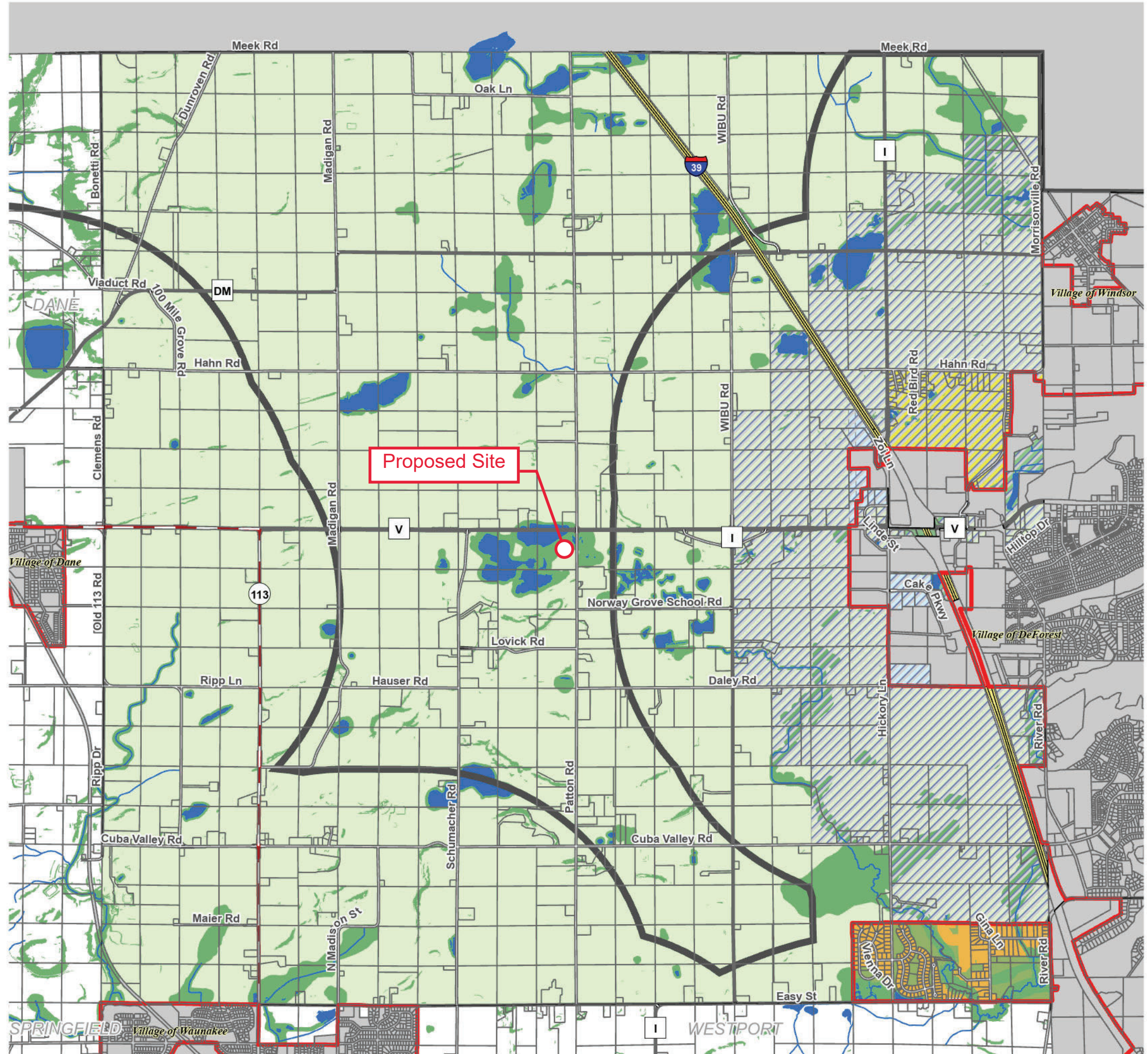


# Town of Vienna

## Planned Land Use



# FINAL MAP

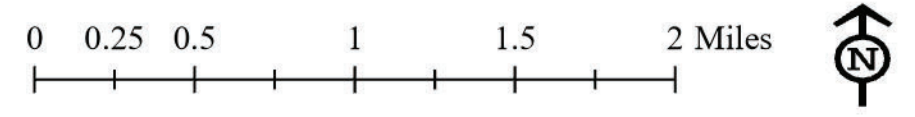


### Effective Zoning Petitions (Rural)

- Zoning District**
- ETZ Extra-Territorial Zoning
  - Extra Territorial Jurisdiction
  - Rivers and Streams
  - Lakes and Ponds
  - Environmental Protection Area
  - Environmental Corridor
  - Service Area

- Vienna PlannedLU**
- Agriculture Preservation
  - Future Residential
  - Office
  - Rural Subdivision
  - Waunakee Residential

Last exported on 10/13/2025.



Source Info:  
 Environmental Protection Area: 2024 (DCPD)  
 Extra Territorial Jurisdiction: 2024 (DCPD)  
 ETZ Zoning: 2024 (DCPD)  
 Municipal Boundary: 2024 (DCLIO)  
 Planned Land Use: 2006 (Town of Vienna)  
 Service Areas: 2024, (CARPC)

This map was prepared through the Dane County Department of Planning and Development in conjunction with the Dane County Land & Water Resources Department, Dane County Land Information Office and the Capital Area Regional Planning Commission