

Heart of the Zoo – Phase 1

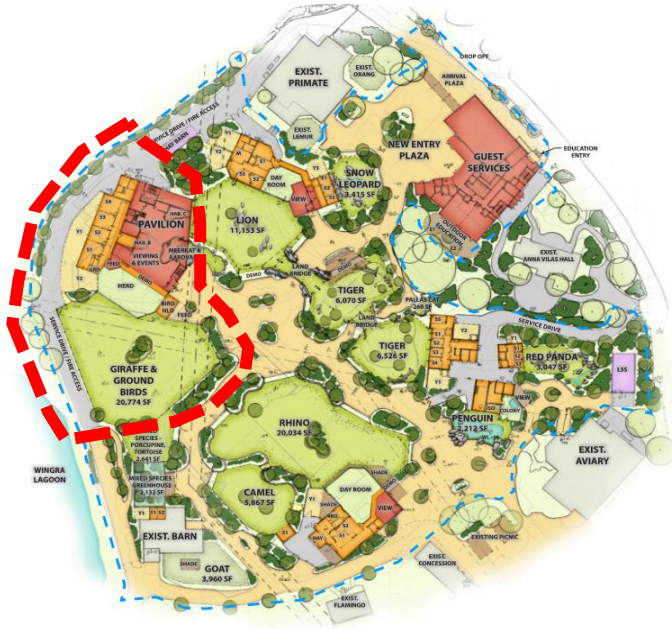
Giraffe & Ground Birds

Project Update

March 11, 2025



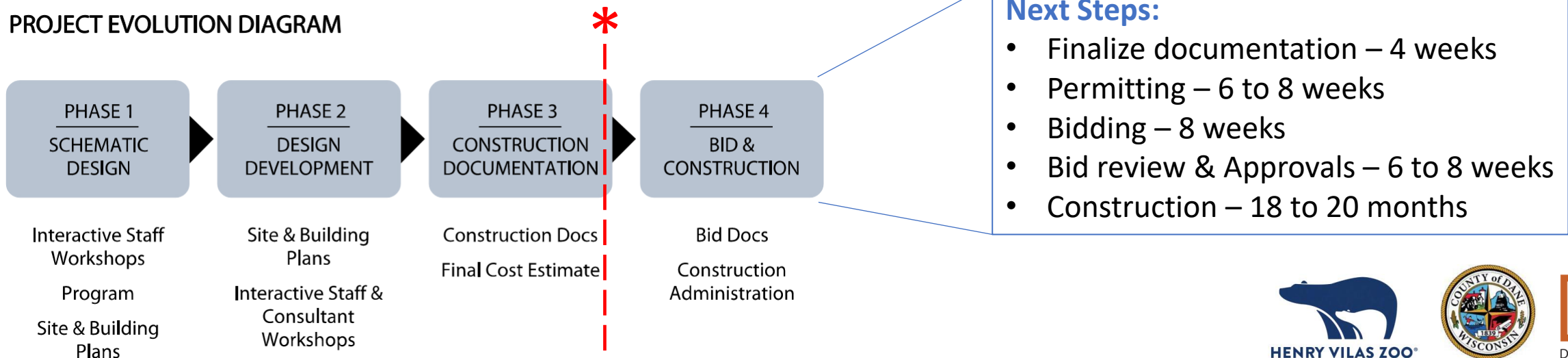
Heart of the Zoo – Phase 1



Project Goals:

- Bring a herd of Giraffes back to Madison
- Provide a state-of-the-art year-round facility
- Education through up-close encounters and engaging interpretives.
- Create a unique setting to host small events

PROJECT EVOLUTION DIAGRAM



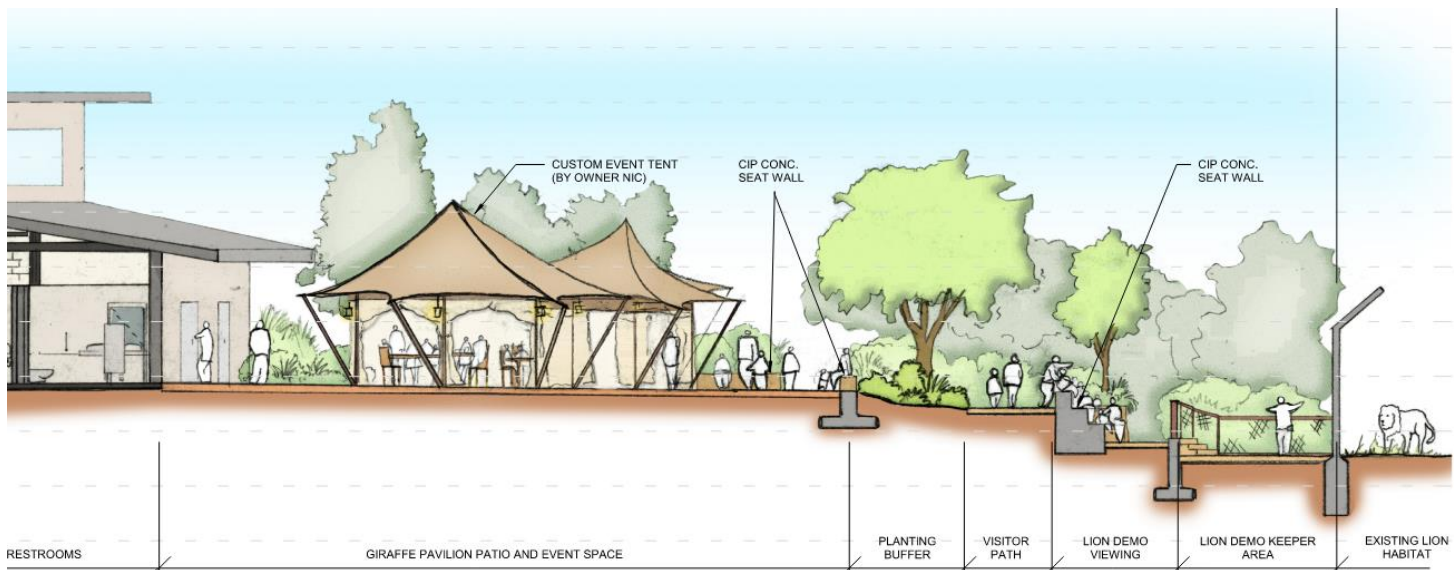
Proposed Site Plan



Event Support & Patio Alternate Plan

Anticipated construction
2025 to 2027



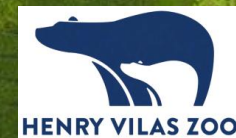


Event Support & Patio





Aerial View





Giraffe Overlook





Shade Shelter



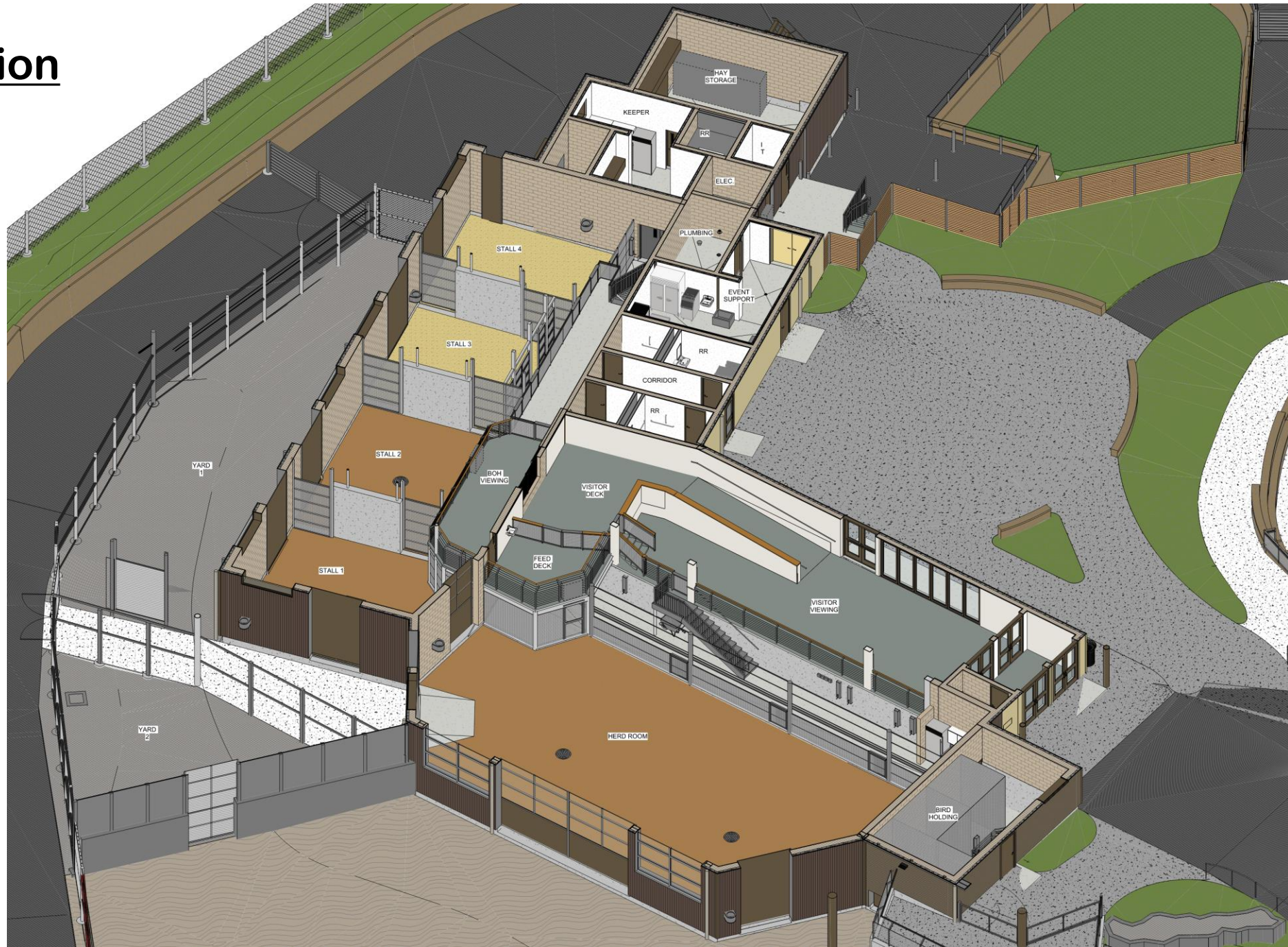


Foundation Name
Giraffe Pavilion

Pavilion Entry



The Pavilion



Interior Finishes

SUSPENDED WOOD VENEER CEILING



PAINTED GYPSUM BOARD



POTENTIAL ACRYLIC STUCCO FINISH



PAINTED ROOF BEAMS AND ROOF DECKING



STAINED WOOD TRIM



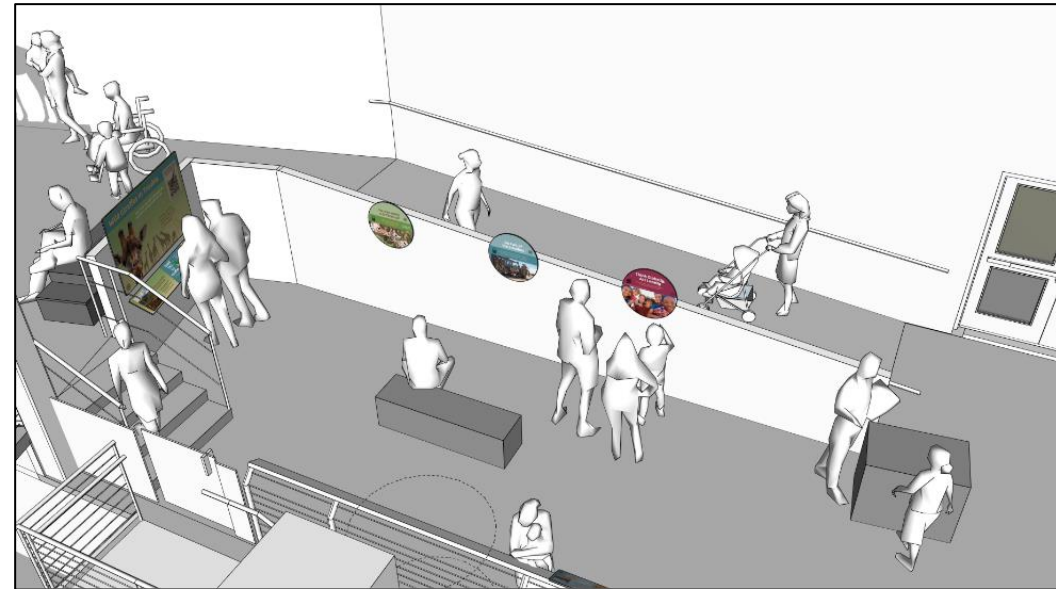
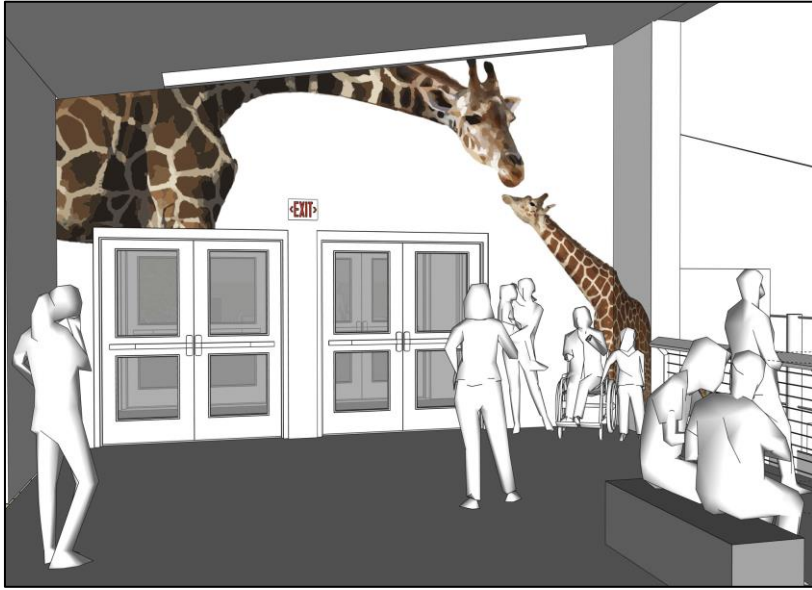
COLORED CONCRETE



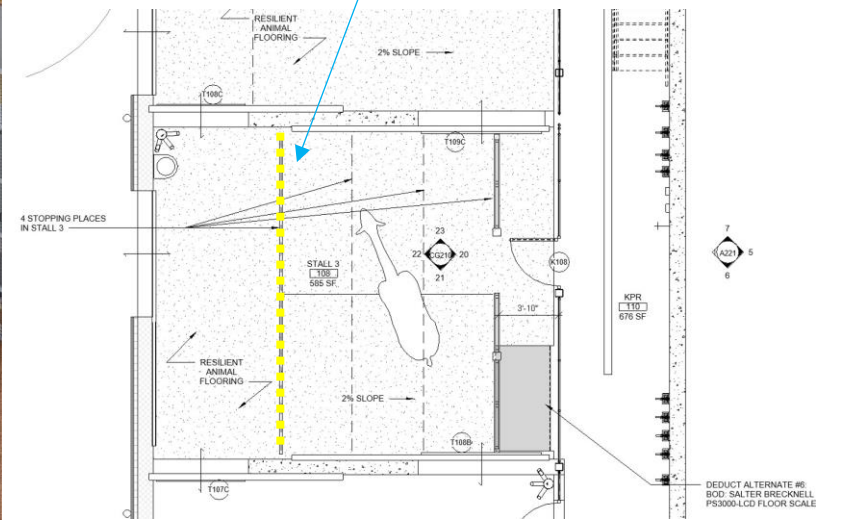
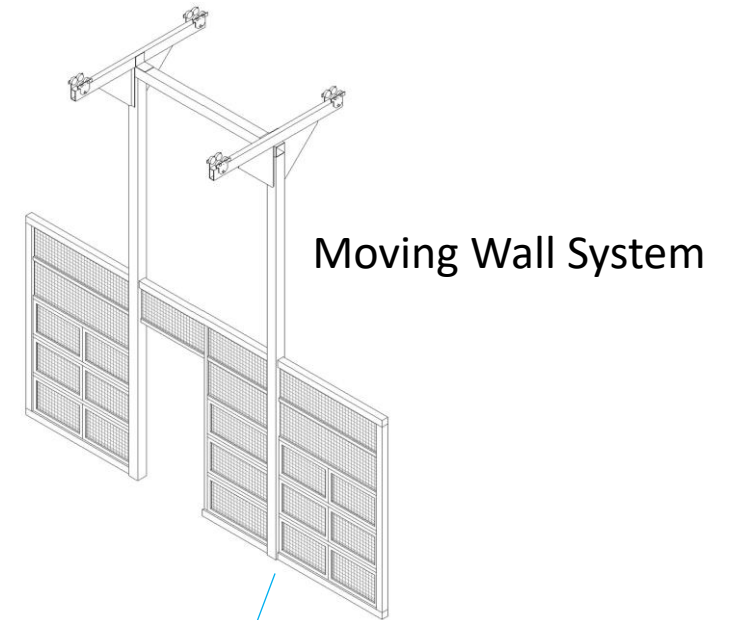
GROUND FACE CMU



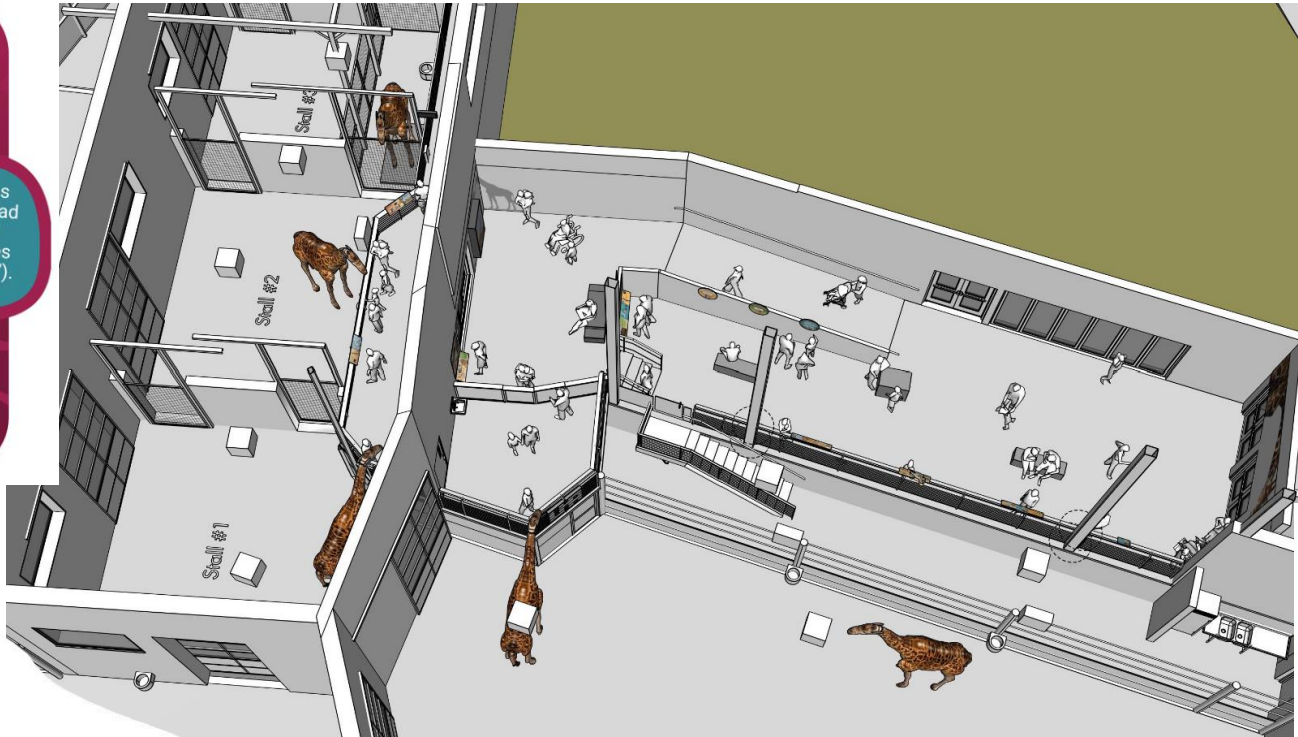
Giraffe Pavilion – Guest Experience



Giraffe Pavilion – Guest Experience



Interpretation with Empathy Focus



Is a Giraffe Eating Here?

This "puzzle feeder" was designed to give giraffes a mental workout—and let you watch them eating up-close. Can you see a giraffe's clever tongue grasping the healthy treats inside?

Why the purplish-black tongue? Think about eating leaves in full sun, and getting a sunburned tongue... Ouch! This color serves as built-in sunscreen.

Browse-Browse, Chew-Chew

Adult giraffes can eat 100 pounds of food per day. That's a lot of munching! *All day long, their molars grind up branches, leaves, and buds.*

The upper jaw has no front teeth... Did you notice? A giraffe uses its tongue to grasp branches and pull off leaves.

A Menu of Choices

We offer our giraffes different foods throughout the day: honey locust leaves and seed pods, hay, and treats such as lettuce and crackers.

Wild Giraffes in Trouble

Henry Vilas Zoo staff, volunteers, and guests are joining together to help.

Giraffes have been disappearing across Africa, declining 40% in just 40 years.

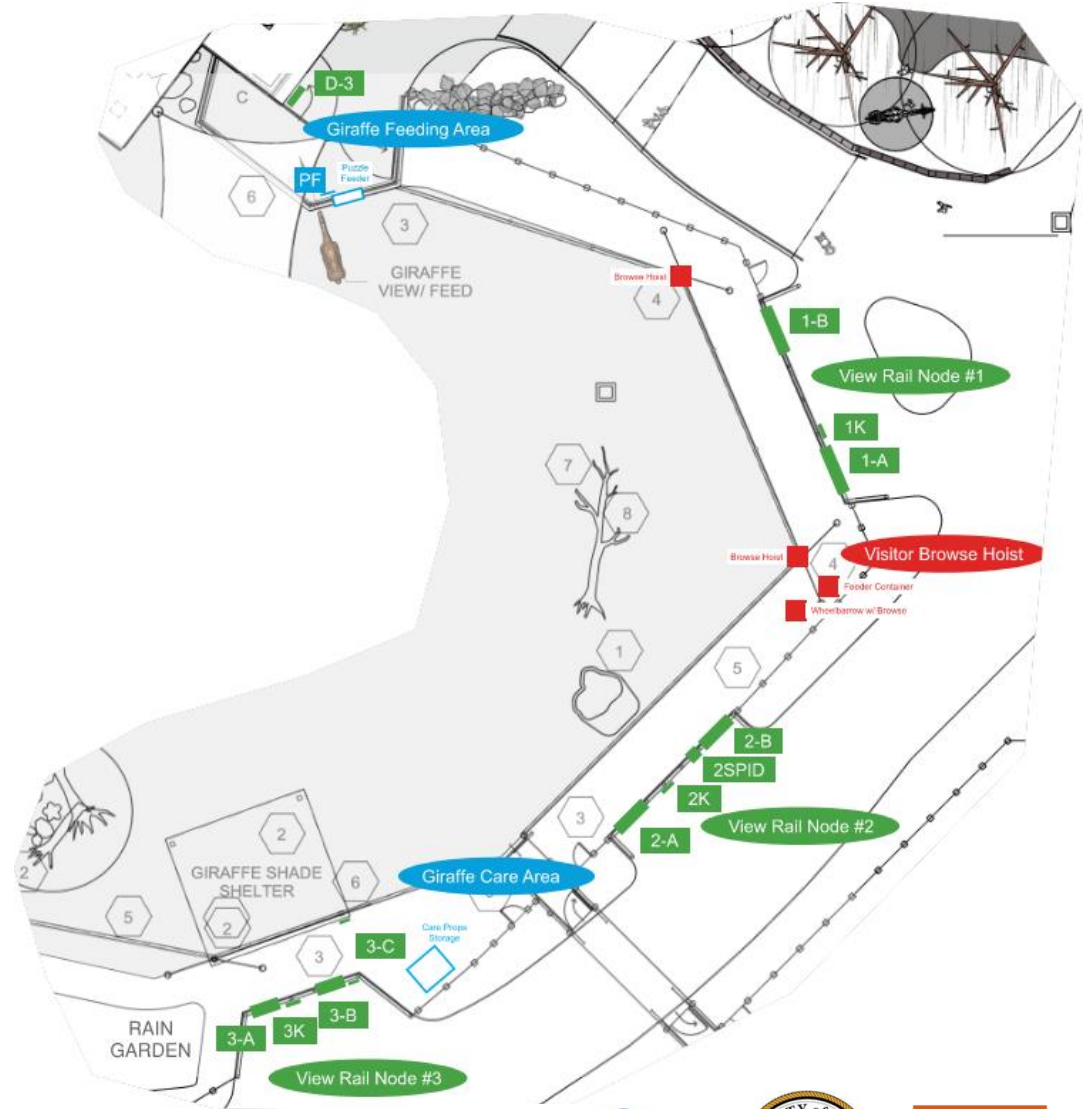
Population decline 40%

Check out some conservation work in action—and join us!

Short video of projects in Africa



Site – Interpretive Elements



Guess What?
Giraffes have excellent hearing. Their large ears project up and out, designed to capture the sounds of danger.

RETICULATED GIRAFFE
Giraffa reticulata

DIET	STATUS
Plants	Endangered
	Threatened
	Stable

RANGE
Species range

Imagine looking across the savanna from 16 feet high, scouting for predators such as lions, leopards, and hyenas – before they get too close.

So Tall...
Did you know giraffes are the world's tallest land animals?

MALES
16–18 ft.

FEMALES
15–16 ft.

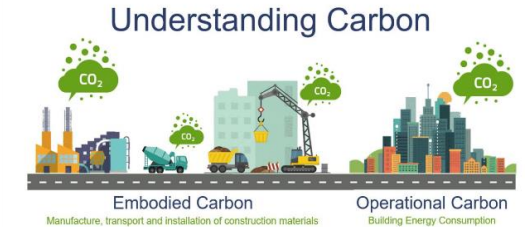
SEE LIKE A GIRAFFE
Use your phone to check out what it's like to have a "giraffe's-eye view."

FPO

Sustainable Design



- Rainwater Reuse
- Daylight Harvesting & Lighting Controls
- Dane County Off-Site Renewables & PV Ready
- Minimal Fossil Fuel Use
- Metering, Monitoring, & Controls
- Low Carbon Concrete



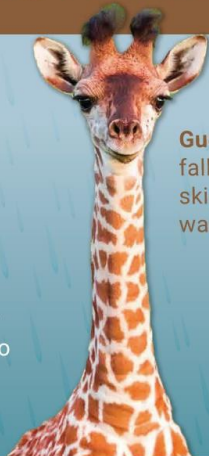
APPLICATION	f_c (min) PSI	W/CM (Max)	Coarse Agg. (Max)	Pozzolans (by mass) (% Substituted) ²	Air Content (Max %)	Exposure Category	Slump Limit Inch
Footings: Building	3500	0.60	1 ½"	50%	N/A	F0	4 ± 1
Foundations: Walls & Piers	4500	0.45	¾"	45%	6.0 (±1.5%)	F1/F2	4 ± 1
Retaining Walls	4500	0.45	¾"	45%	6.0 (±1.5%)	F1/F2	4 ± 1
Slabs: Exterior	5000	0.40	¾"	50%	6.0 (±1.5%)	F3	4 ± 1
Slab-on-Grade: Interior	3000	0.60	¾"	45% ³	N/A ⁴	F0	4 ± 1
Slab-on-Grade: Stalls & Herd Room	5000	0.40	¾"	50% ³	6.0 (±1.5%)	F3	4 ± 1
Elevated Slab: Interior	4000	0.55	¾"	45% ³	N/A ⁴	F0	4 ± 1

- Notes:**
1. To achieve Low Carbon Embodied Footprint goals, option to consider 56-day duration for minimum compressive strength in lieu of standard 28-day requirement for fly ash, slag, or Type II concretes.
 2. See additional pozzolan substitution requirements for F3 mixes in section 2.10B.
 3. Limit fly ash content as required for floor finishing.
 4. Do not use air-entraining admixture or allow total air content to exceed 3 percent for concrete used in trowel-finished floors.

Saving Water, Protecting Our Lakes



This downspout pipe is part of an innovative water system to capture rainwater and snowmelt. It connects to underground reservoirs that hold stormwater for reuse.



Guess what? Water falling from Madison's skies gets reused to wash the giraffe stalls.



Storing stormwater on-site helps prevent flooding and saves resources. A win-win!



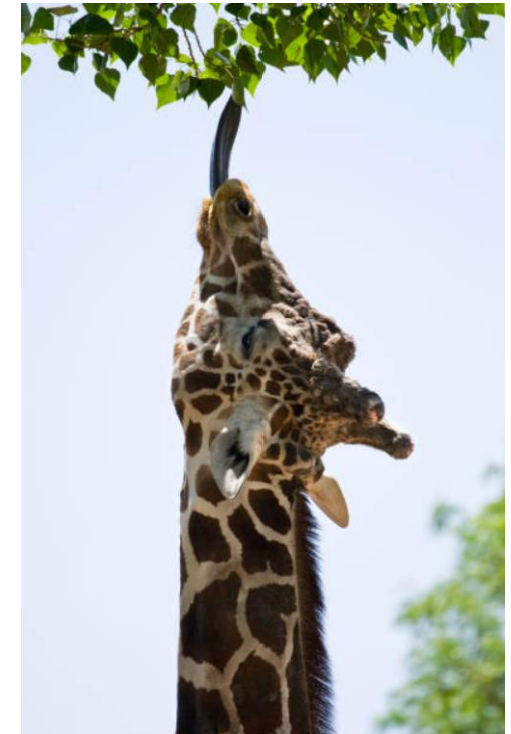
Did you know the Zoo's electricity is 100% renewable?

Join us in lowering carbon emissions and slowing climate change. Choose a green power program for your home or business.

Check out our sustainable building choices for this new Giraffe Exhibit.



Animal Activity & Healthcare



Questions?

Giraffe & Ground Birds
Project Update
March 11, 2025

