



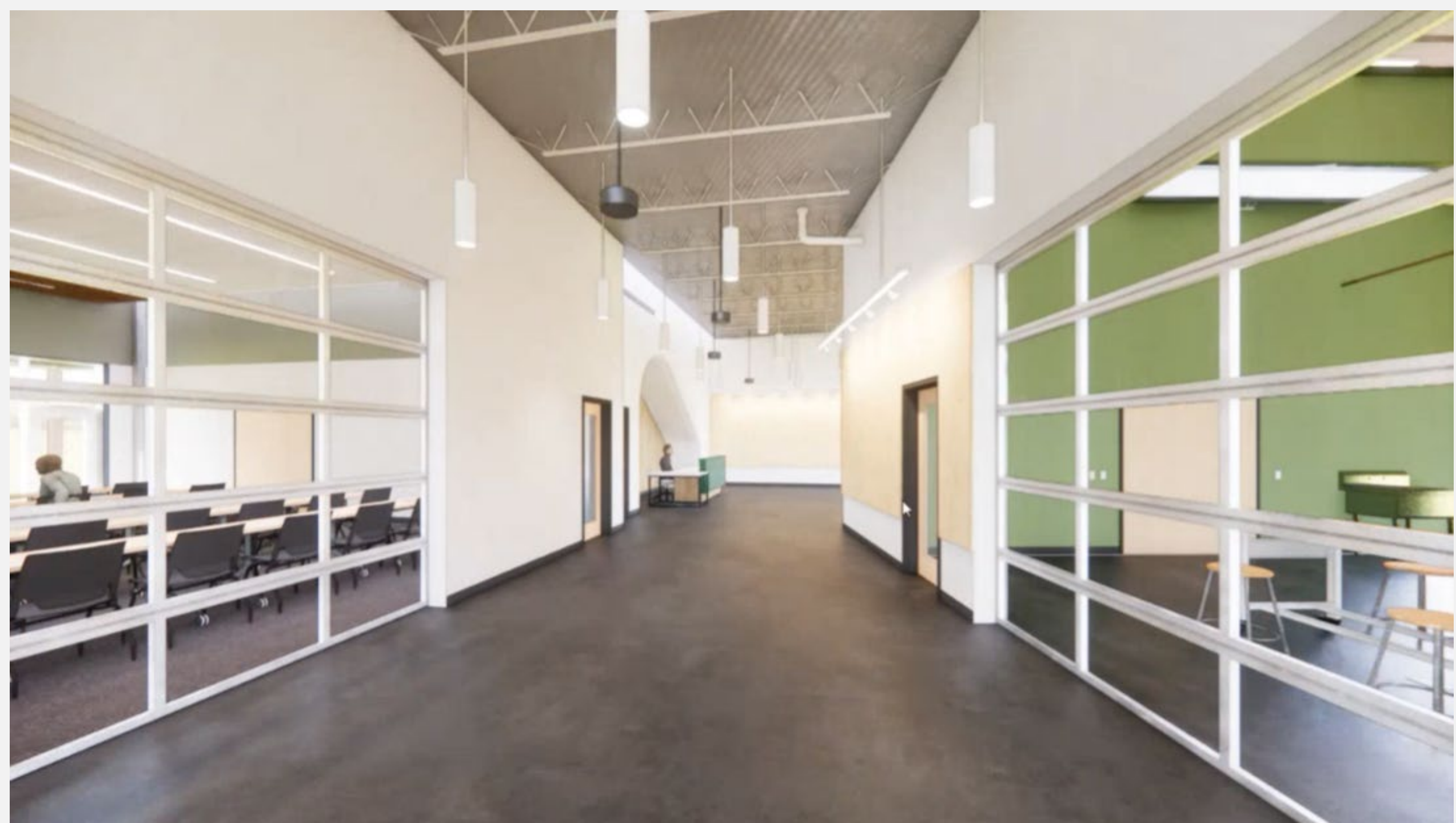
DANE COUNTY DEPARTMENT OF

**WASTE +
RENEWABLES**

Sustainability Campus

Internal Design Review





MULTIPURPOSE ROOM



Opportunity for
branding and artwork

Opportunity for recycled
material display



Stained concrete
with fine aggregate



EDU & ADMIN

Design Concept statement

The interior design of the *DCSC Education and Administrative Building* is rooted in **sustainability**, **adaptability**, and **community engagement**, creating a space that prioritizes human **well-being** while embodying **environmental stewardship**. Drawing from patterns of **biophilic design**, the space offers abundant daylight, quality views and natural materials. Public spaces foster education and community engagement through interactive exhibits and the use of recycled and reclaimed materials. Acoustic comfort, flexible layouts, and informal gathering spaces support focus and collaboration for **staff**.

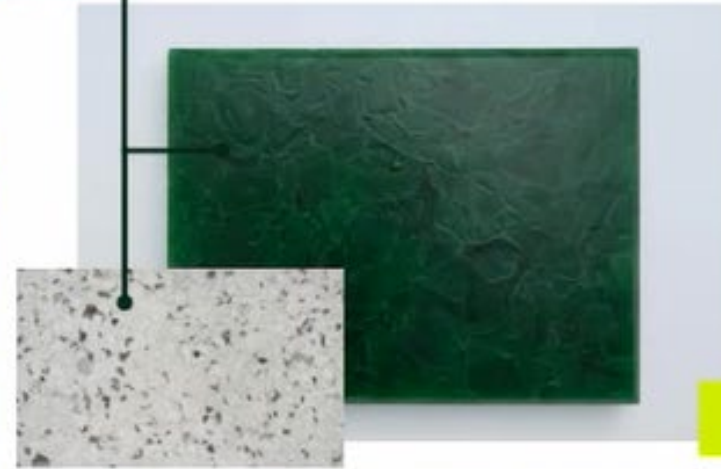
Through these efforts, the building becomes a living model of circular, regenerative design creating a space that is inspiring, efficient, and deeply connected to its mission.

MOOD BOARD

Reclaimed wood



Recycled materials



Integration of Waste & Renewables brand colors through signage and wayfinding



Plan for plants



Focal stair

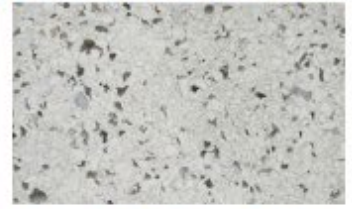
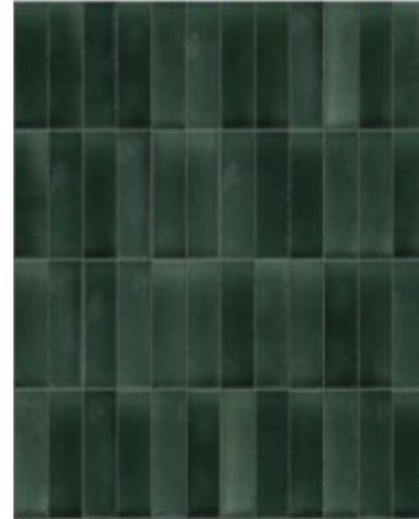
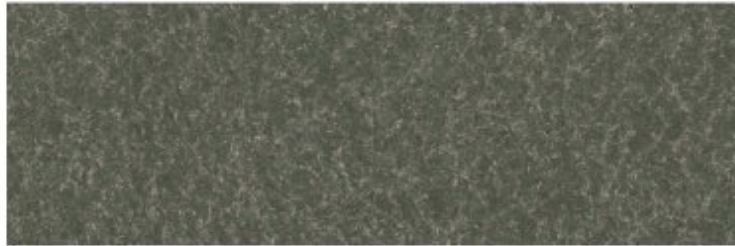
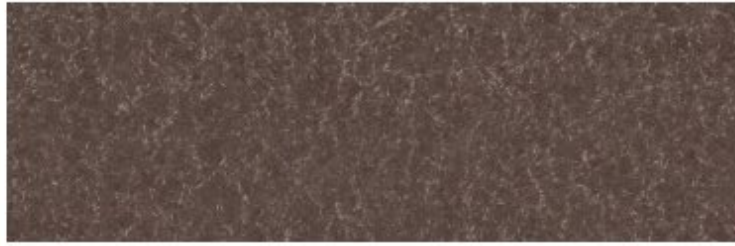


Interactive exhibition space and works from local artists

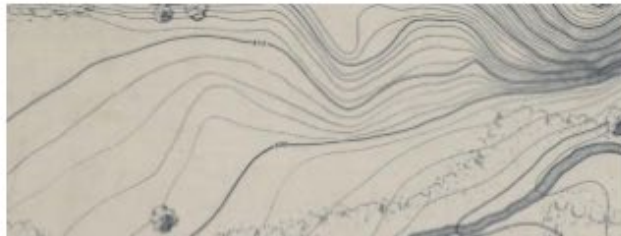
- Recycled PET carpet
- ECPLT
- Fluid Applied (epoxy)
- LVT
- Polished Concrete
- Stained Concrete



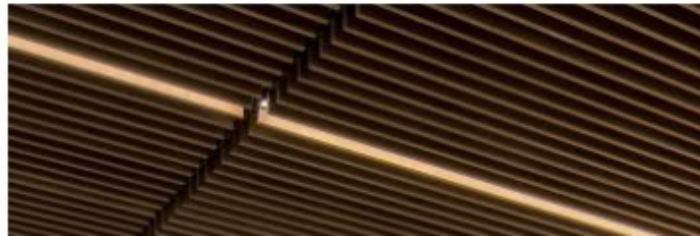
INTERIOR FINISH PALETTE



Designer notes: Canopy inspired paint concept, Palette pairs with branding/signage, focal stair



LANDFILL TOPO/BRANDING PLACEHOLDER



WOOD GRILLE WITH ACOUSTIC BACKING

BREAKROOM



Place holder to show how the palette looks with branding colors

PLYWOOD WALL SYSTEM



RECYCLED MATERIAL COUNTERTOP



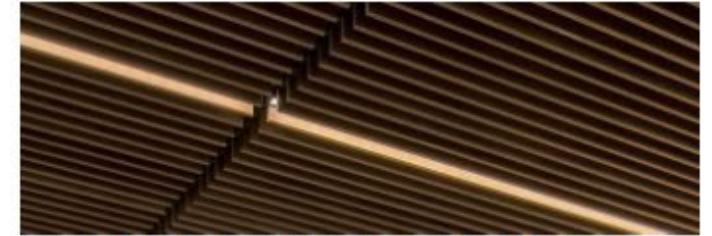
PAINT PALETTE



Designer notes: Canopy inspired paint concept pairs with natural tones throughout. Ceiling focuses on sound absorption for improved acoustics, and ties in wood elements.



MEETING



WOOD GRILLE WITH ACOUSTIC BACKING



RECYCLED PET CARPET



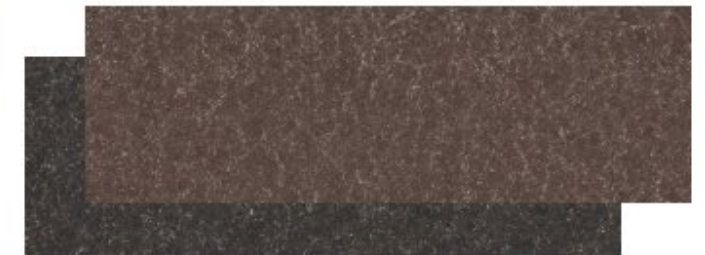
Designer notes: Wall graphic pulls from branding colors and features landscape-inspired imagery. Recycled elements are featured through the graphic, countertop, and flooring.



CONFERENCE ROOMS



PVC-FREE WALLCOVERING
POST-CONSUMER RECYCLED CONTENT



RECYCLED PET CARPET



GABION DESK RETURN



BIOGLASS RECYCLED BOTTLES



RECLAIMED WOOD PANELING

Designer notes: Gabion ties with landscape arch concept and can be filled with recycled waste items for display. Wood is reclaimed from the Hope Hollow House - sanded down

RECEPTION

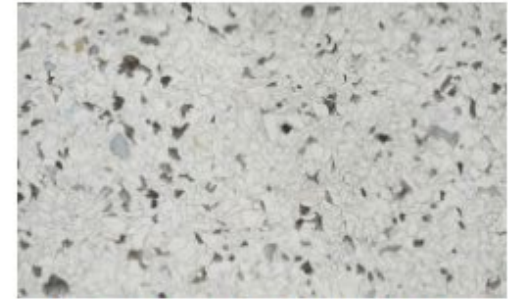
Designer notes: Design elements are pared back and functional, with a focus on wall tiles that differ room to room. Colors take inspiration from branding in more muted, earthy tones.



RESTROOMS



WALL TILE COLOR VARIES BY RESTROOM



RECYCLED MATERIAL COUNTERTOP
PLASTIC SOURCED FROM REFRIGERATORS/CONSUMER ELECTRONICS



STAINED CONCRETE FLOORING

Designer notes: Calm, serene environment allows users to relax. Elements of biophilia through nature-inspired graphic, plants, and recycled materials.



WELL & MOTHER'S ROOMS



PVC-FREE WALLCOVERING
POST-CONSUMER RECYCLED CONTENT



RECYCLED MATERIAL COUNTERTOP
PLASTIC SOURCED FROM REFRIGERATORS/CONSUMER ELECTRONICS



RECYCLED PET CARPET