

Dane County Youth Justice and Prevention (YJP)

May 16, 2024

Andre Johnson, YJP Manager

johnson.andre@danecounty.gov



DCDHS YJP Philosophy

- Client-Centered approach
- Use of evidence based assessments that identify risk and protective factors for use in case planning
- Minimal interventions for low risk youth
- Least intrusive interventions including diversion
- Support of early intervention and prevention services
- Support of community based services
- Incorporating client voice and input
- Matching services to client needs



Youth Justice and Prevention Services (YJP)

Youth Justice and Prevention (YJP) in Dane County provides a variety of services and supports to youth ranging from prevention through court ordered formal efforts. YJP is comprised of six units with approximately 68 staff (1 Manager, 6 Supervisors, 40 social workers, 13 Program Leaders, 2 YJ Coordinators and 6 Youth Workers).

- Intake
- Court Diversion (CDU)
- Early Intervention Services Unit (EISU)
- Ongoing South/West (SWT)
- Ongoing North/East (NET)
- Intensive Ongoing

Authority:

- Wis. Stat. § [938](#)
- Wis. Stat. § [938.02\(2g\)](#)
- Wis. Stat. § [938.06\(2\)\(a\)](#)
- Wis. Stat. § [938.067\(6\)-\(9\)](#)
- Wis. Stat. § [938.069](#)



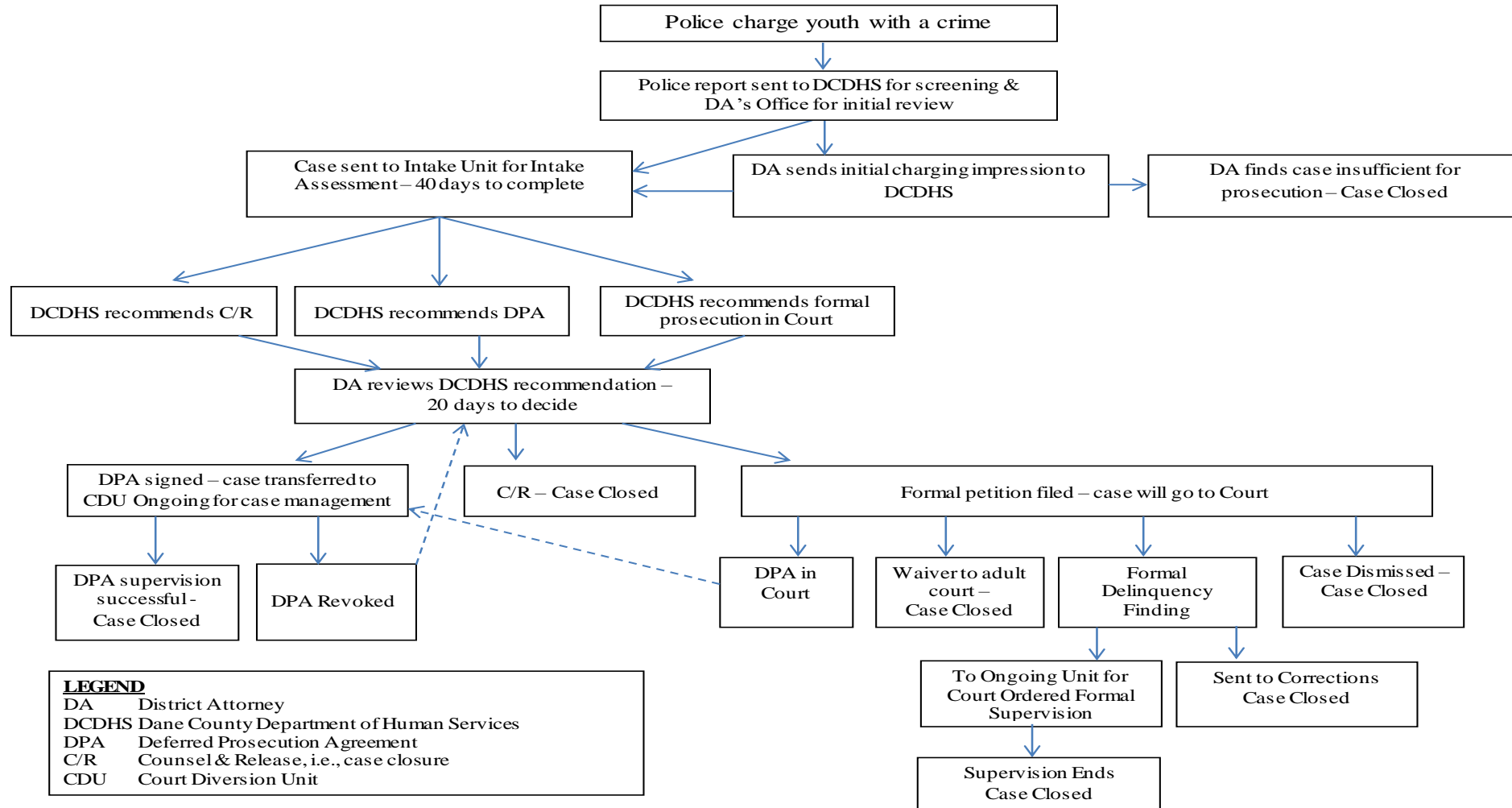
Youth Justice and Prevention Services (YJP)

- YJP staff assess the functioning of youth/families referred via law enforcement for violations of state statutes.
- Based on the outcome of the assessment, youth may work with one or more of the six YJP units.
- The current evidence-based and state-supported assessment ([YASI](#)) is used in combination with Dane County's own Youth Justice Assessment to determine risk/need vs strengths/protective factors.
- The YJP social worker then recommends a formal referral to Juvenile Court, a Deferred Prosecution Agreement (DPA), or another alternative to meet the needs of that youth and family based on these results.



YJP Flow Chart

DCDHS YOUTH JUSTICE SERVICES FLOW CHART



LEGEND
 DA District Attorney
 DCDHS Dane County Department of Human Services
 DPA Deferred Prosecution Agreement
 C/R Counsel & Release, i.e., case closure
 CDU Court Diversion Unit



Intake

- Driven by Chapter 938
- Provide rights to youth and parents
- Complete interviews with youth and parents
- Connect with collaterals
- Complete Intake (including conducting pre-screen and full assessment utilizing the YASI)
- Make recommendations as to case closure, DPA or formal referral to Juvenile Court (within 40 days of LE referral)
- Complete Court Report/Youth Justice Assessment
- Attend all court hearings
- Case Management through Disposition
- Referrals to services
- Complete case notes as required by policy
- Comply with State Standards
- Participate on Community Safety Intervention Team (CSIT)

Ongoing

- All items included from the intake responsibilities for re-referrals of active cases
- Receive cases from Intake post disposition
- Complete YASI case plan (within 45 days)
- Complete YASI reassessments based on policy
- Attend all court hearings
- Prepare and file requests for hearings (sanctions, extensions, change of placement, plea, custody review, etc.)
- Communicate with collaterals
- Make additional referrals as needed
- Complete Face to Face contacts at least monthly on all youth in Out of Home Care
- Ongoing Case Management
- Participate on Community Safety Intervention Team (CSIT)



Early Intervention Services Unit (EISU)

- Provide school based groups and 1 on 1 supports for youth in MMSD and Verona (Sun Prairie and Middleton to be added soon)
- Participate on weekly Community Safety Intervention Team (CSIT)
- Participate on bi-weekly Youth Multi-Agency Collaborative (YMAC)
- Provide Right Track Work Crews for youth in the summer months
- Support youth in Restorative Justice training
- Provide support for youth and families involved with YJP
- Provide support for emerging adults age 17-25 including (housing, employment, healthcare, etc.)
- Provide resource support for YJP Staff
- Assist in support for youth group programming
- Provide support for youth at-risk of, or who are being sex trafficked



In addition to YJP services, staff may also utilize additional tools such as electronic monitoring, urinalysis collection, community supervision services, mentoring or specialized support services such as prevention and intervention for gang involvement and sex trafficking.

DCDHS also contracts with a variety of community-based providers for services that address the needs, and build upon the strengths of the youth and families that we serve.



Potential Services and Supports

Internal Services

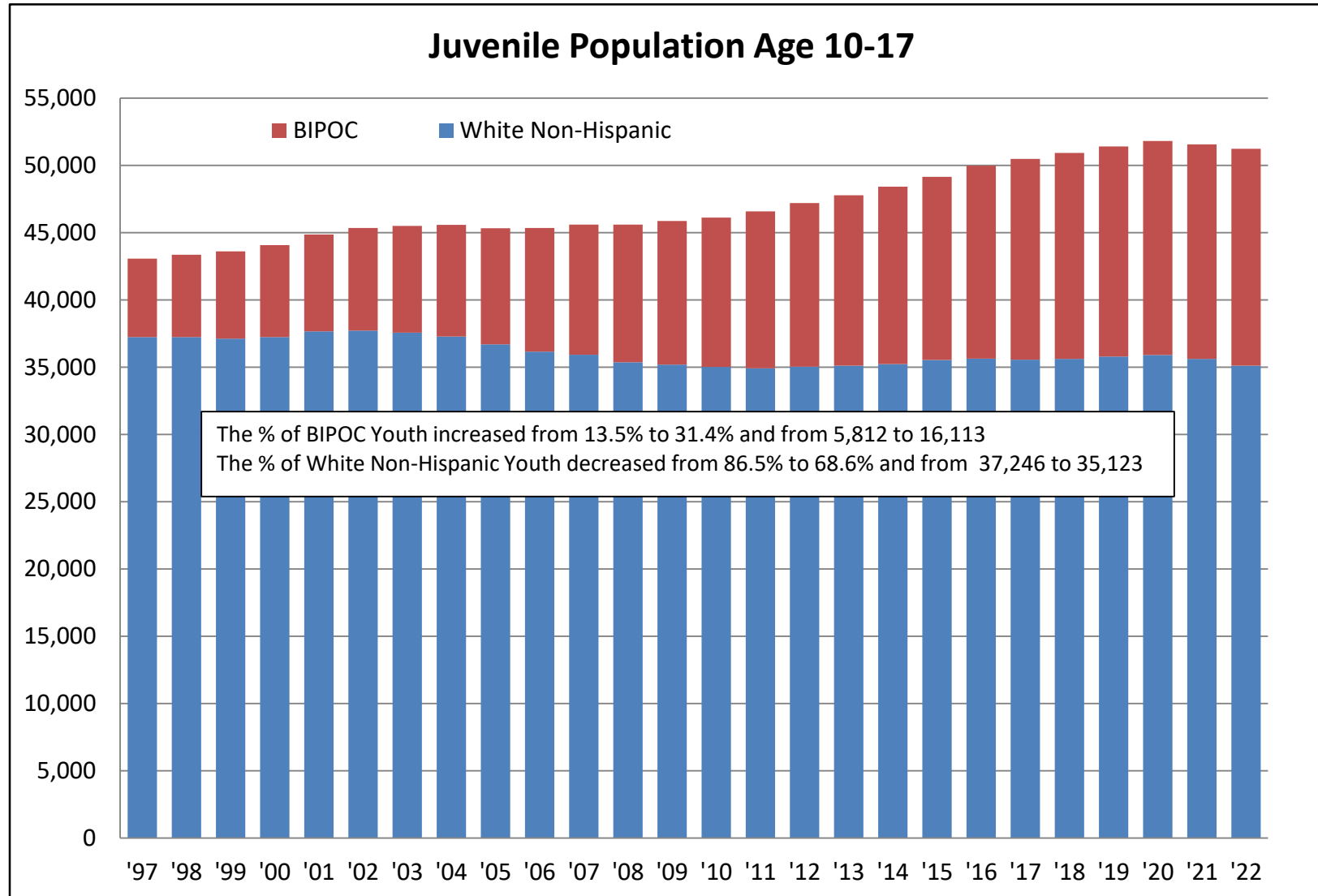
- Gang Response Intervention Team (GRIT) – School based supports
- Sex Trafficking Support
- Assessment and Case Planning – (YASI)
- Supervision of youth under DPA's or Court Orders
- Referrals for court ordered services
- Intensive Supervision
- Electronic Monitoring/Urinalysis (UA) Collection
- Weekend Report Center (WRC)
- Competency Group Support
- One on One support
- Mentoring
- Right Track Work Crew
- Youth Justice Coordinators

External/POS Services

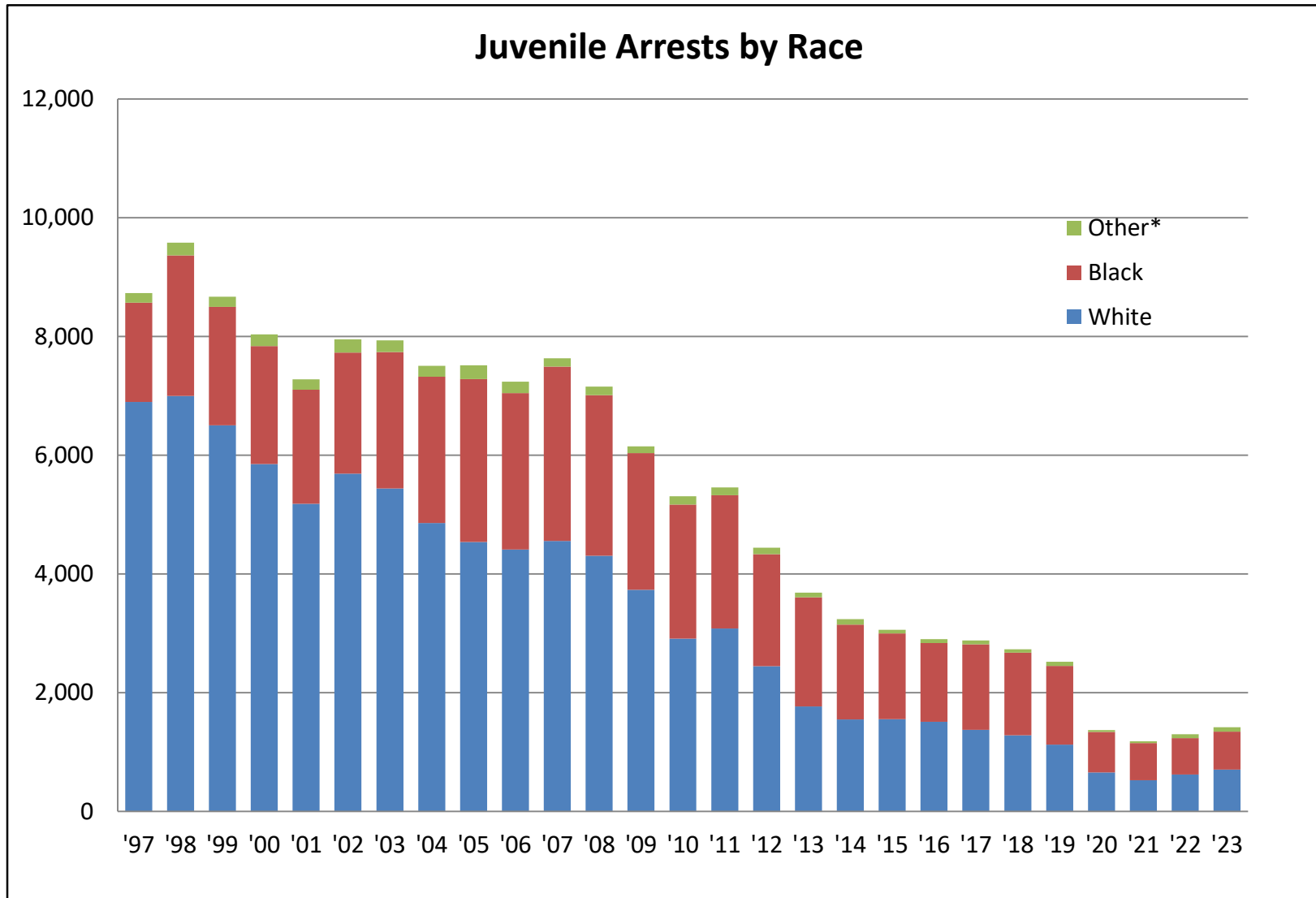
- Youth Employment (Briarpatch, OFS Common Wealth, CEOs of Tomorrow)
- Parent Peer Support (WI Family Ties)
- Restorative Justice (YWCA, Briarpatch)
- Restitution/Community Service (Briarpatch)
- Intensive Supervision (Briarpatch)
- Sex Offender Therapy (Pauquette Center)
- Recreation Services/Supports (Goodman Community Center)
- Crisis/Runaway Services (Briarpatch)
- Individual/Family Therapy (Journey, Anesis)
- Placements (Detention/Shelter, Foster Homes, RCC, Group Home)
- Corrections Programming (Lincoln Hills/Copper Lake, MJTC, GROW)
- Corrections Aftercare



Juvenile Population



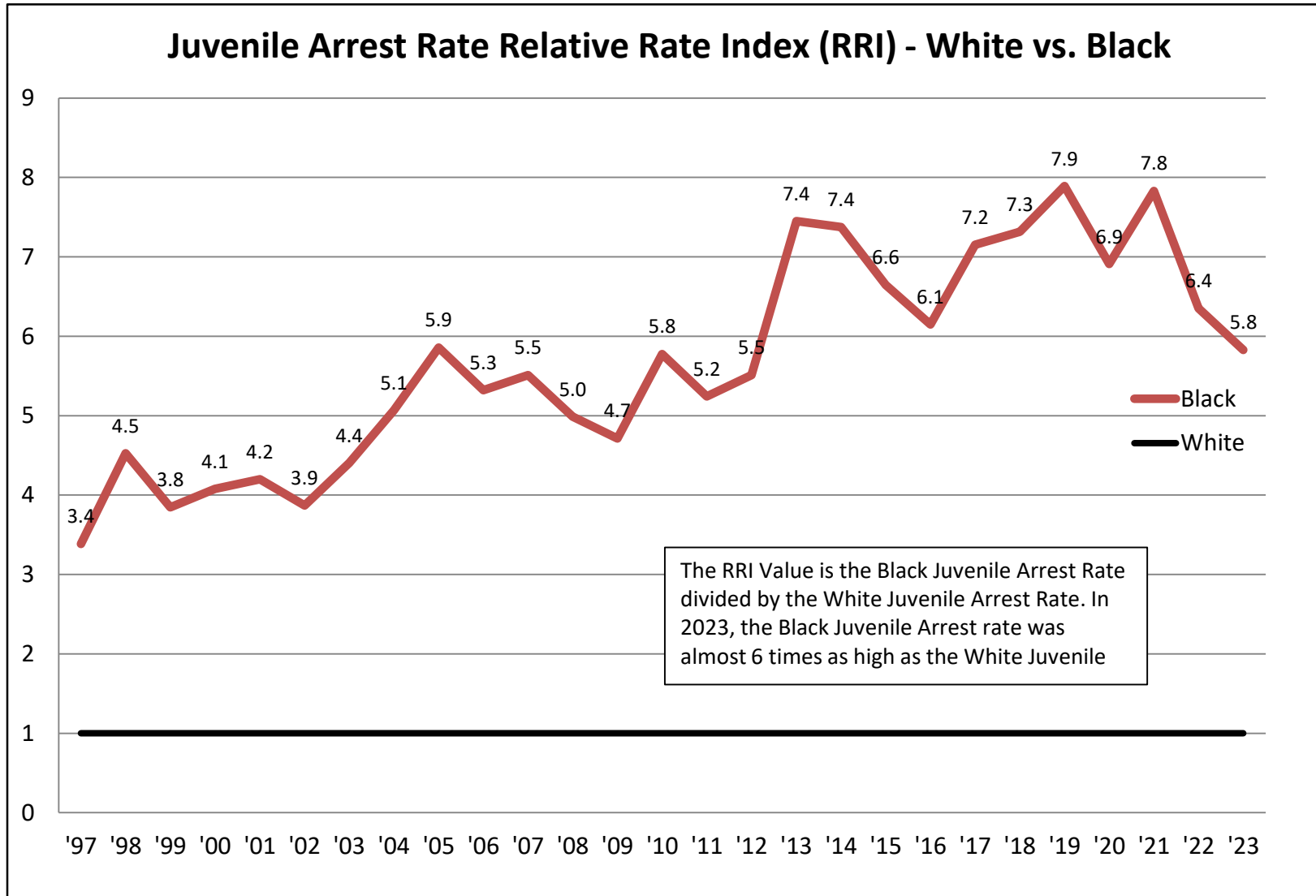
Juvenile Arrests



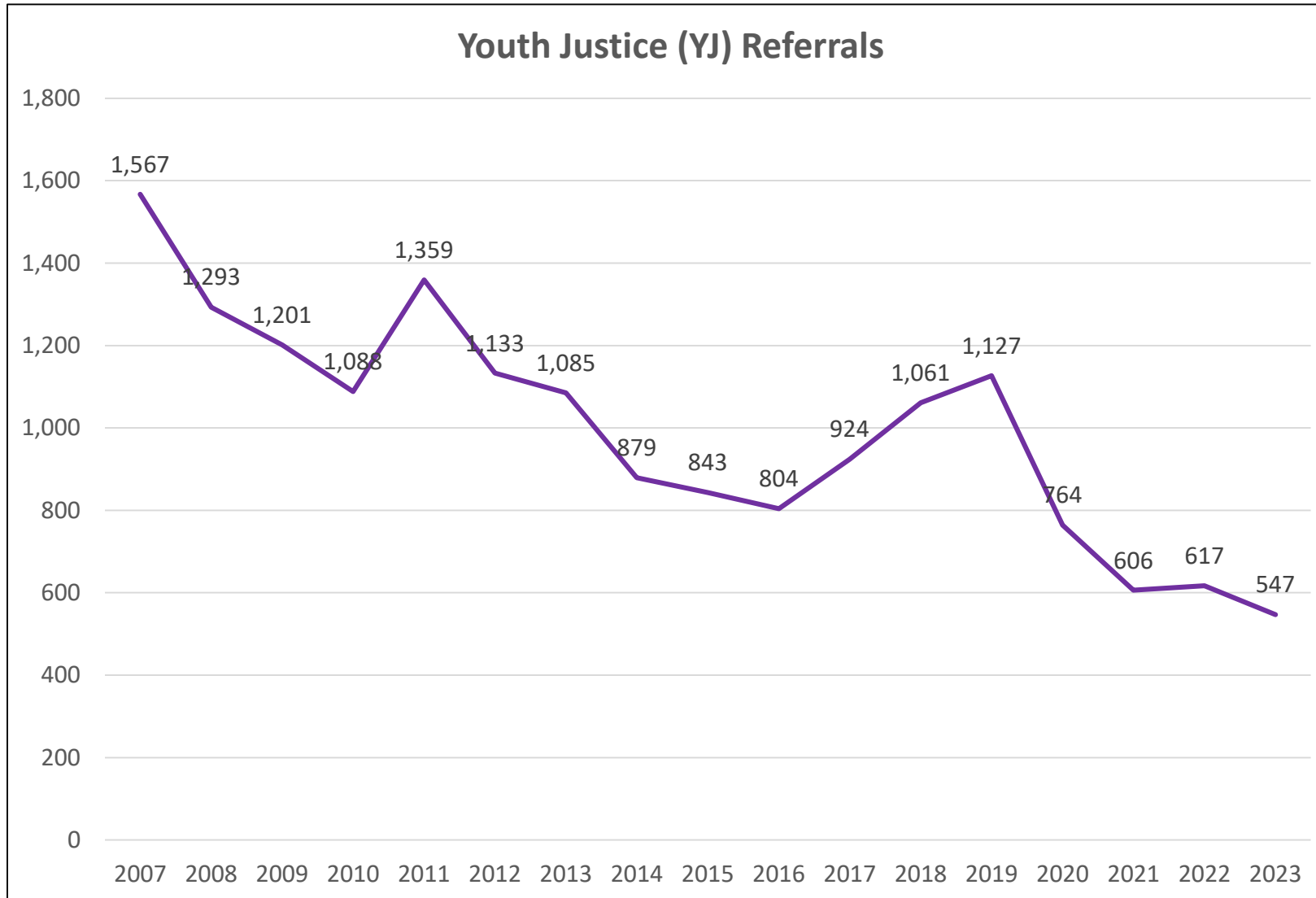
*Other includes Asian, Native American, and Unknown



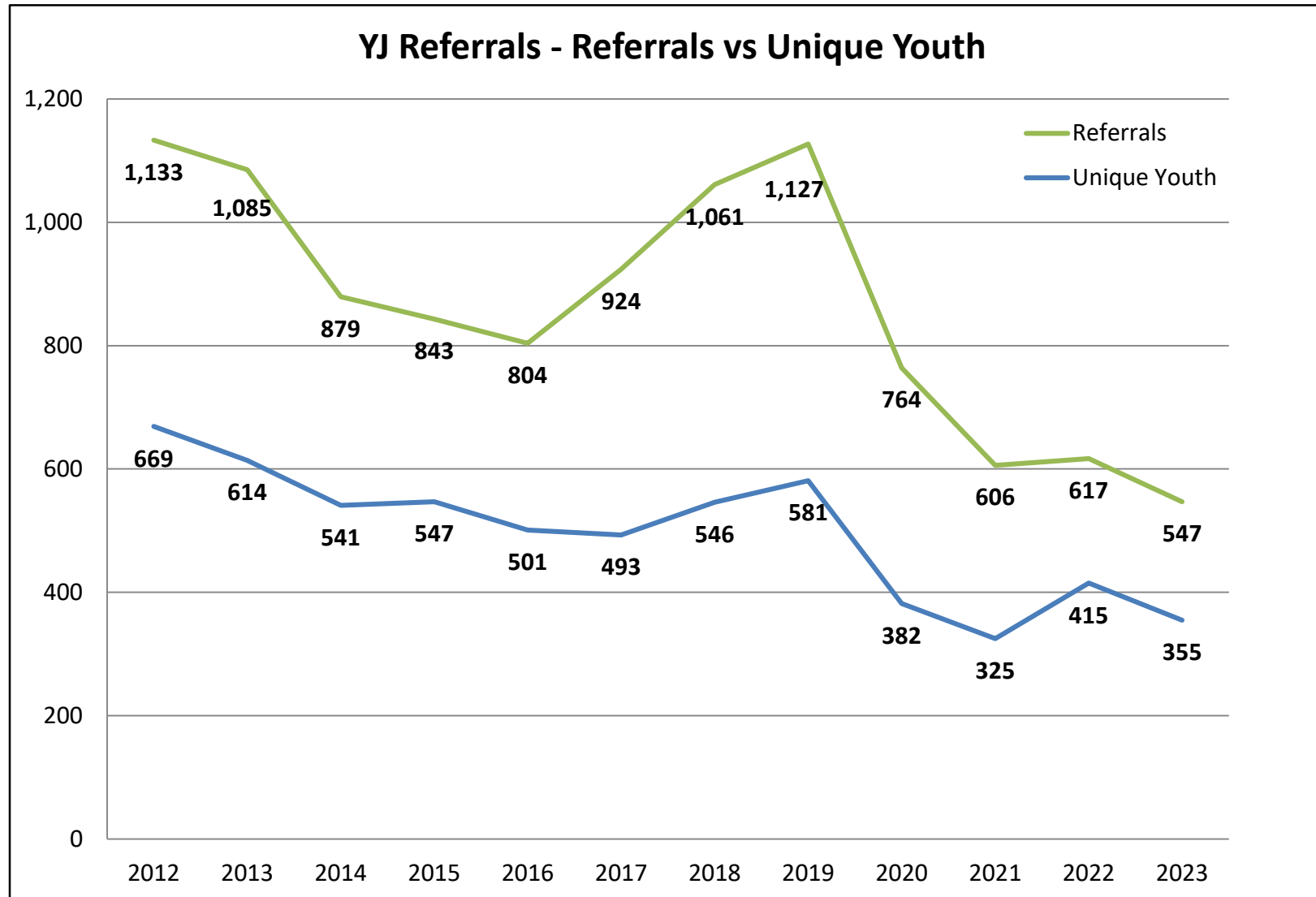
Juvenile Arrests



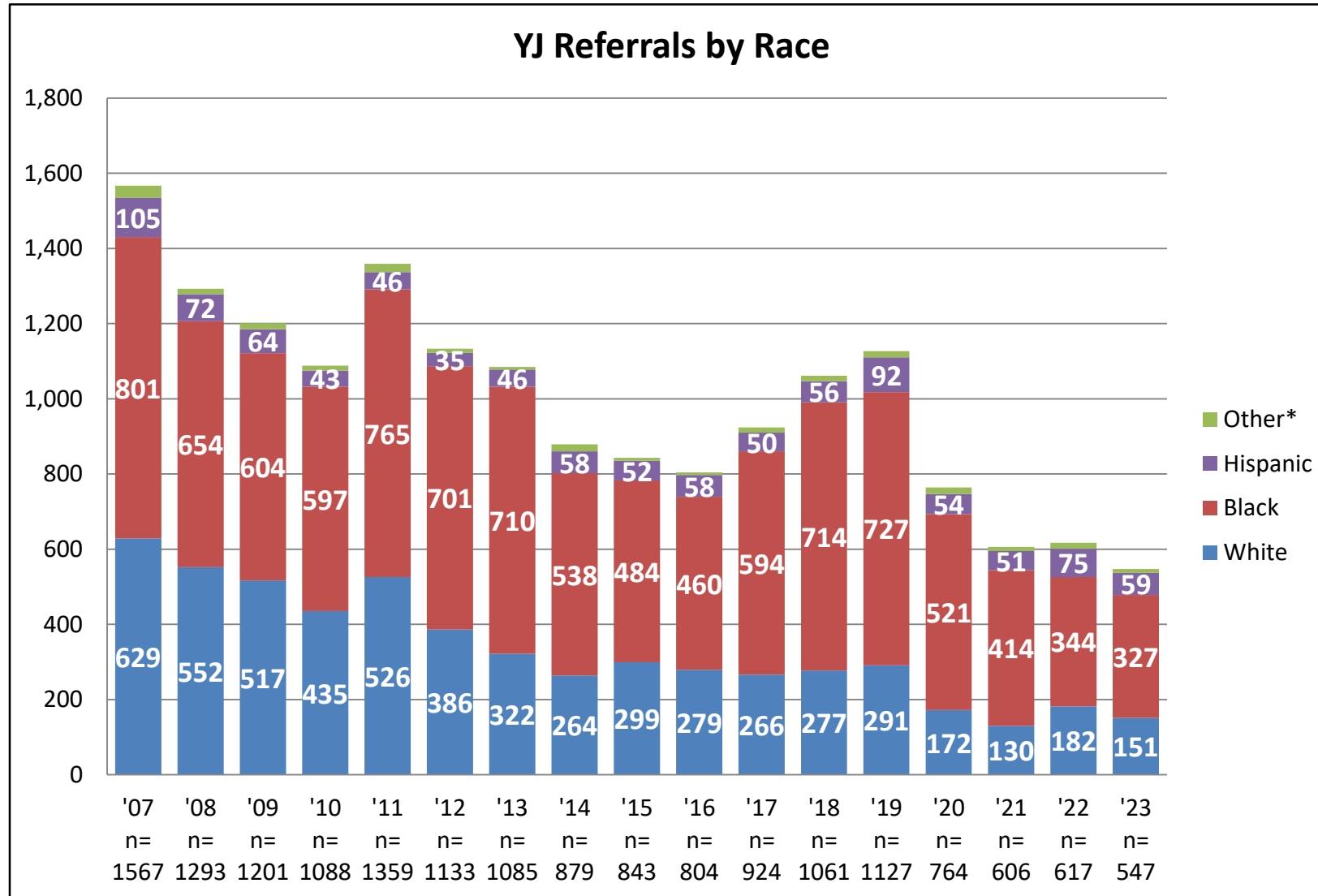
Youth Justice Referrals



Youth Justice Referrals



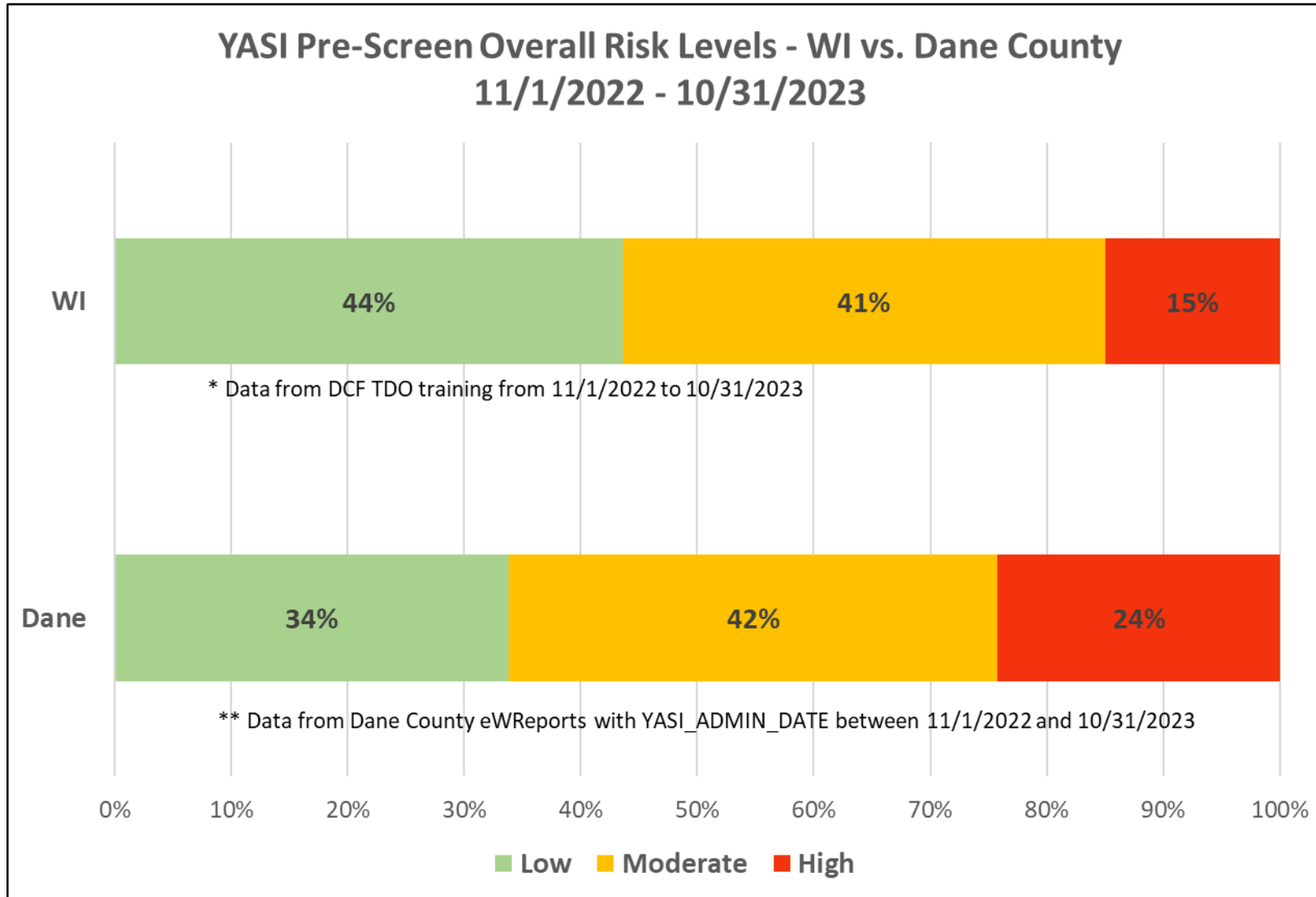
Youth Justice Referrals



Other includes Asian, Hmong, , Native American, Other, Pacific Islander and Unknown



YASI Pre-Screen Overall Risk



Indicates Low, Moderate, or High Risk of re-offending (based on static and dynamic factors)

This is good: we want to focus on the High Risk youth and not on the Low Risk youth



Department Mission

Provide access to effective, innovative, and evidence-based services and resources that support wellbeing, opportunities to thrive, safety, and justice to persons of all backgrounds.

Department Vision

Empowered people thriving in safe, just, and caring communities.



Questions?

