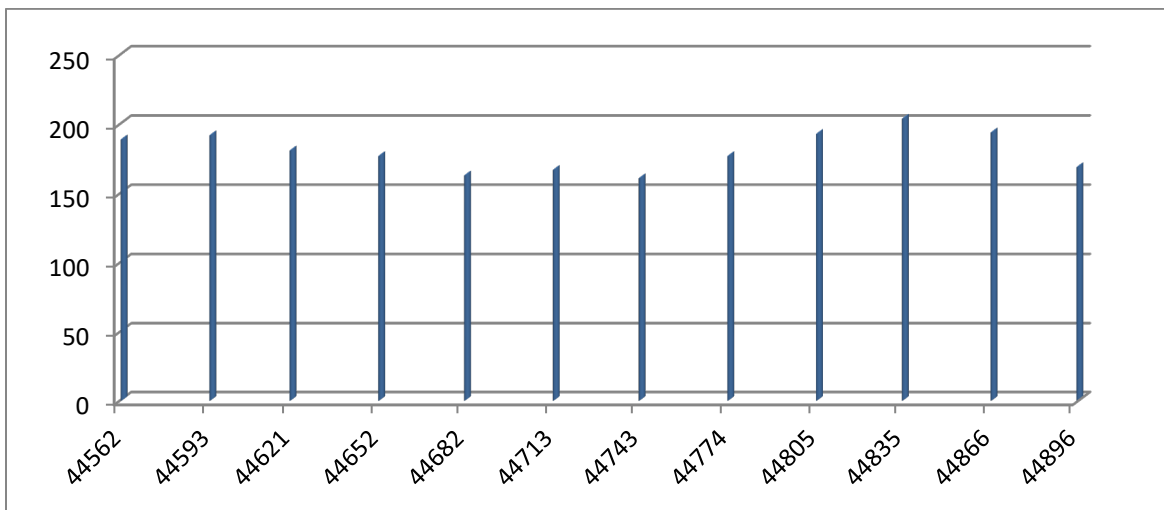




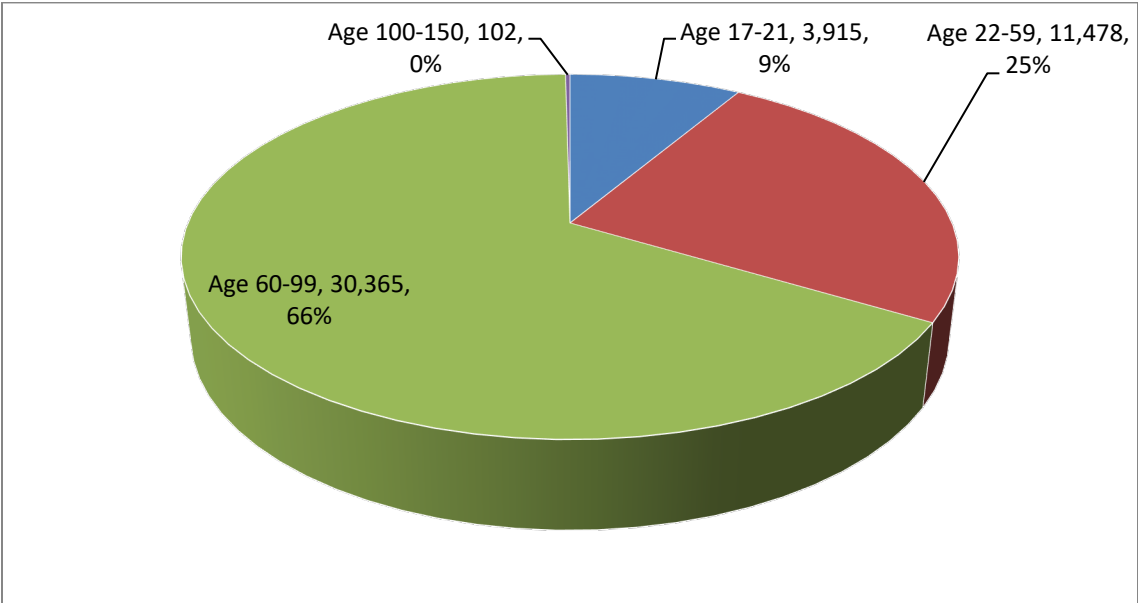
Breakdown of Contacts Per Month

No. of contacts	Month	No. of working days	Average per day
3787	January 2022	20	189
3851	February 2022	20	192
4184	March 2022	23	181
3723	April 2022	21	177
3445	May 2022	21	164
3691	June 2022	22	167
3388	July 2022	21	161
4077	August 2022	23	177
4254	September 2022	22	193
4290	October 2022	21	204
4295	November 2022	22	195
3725	December 2022	22	169



Consumer Age Groups

3,915	17-21
11,478	Age 22-59
30,365	Age 60-99
102	100-150
45,860	Total

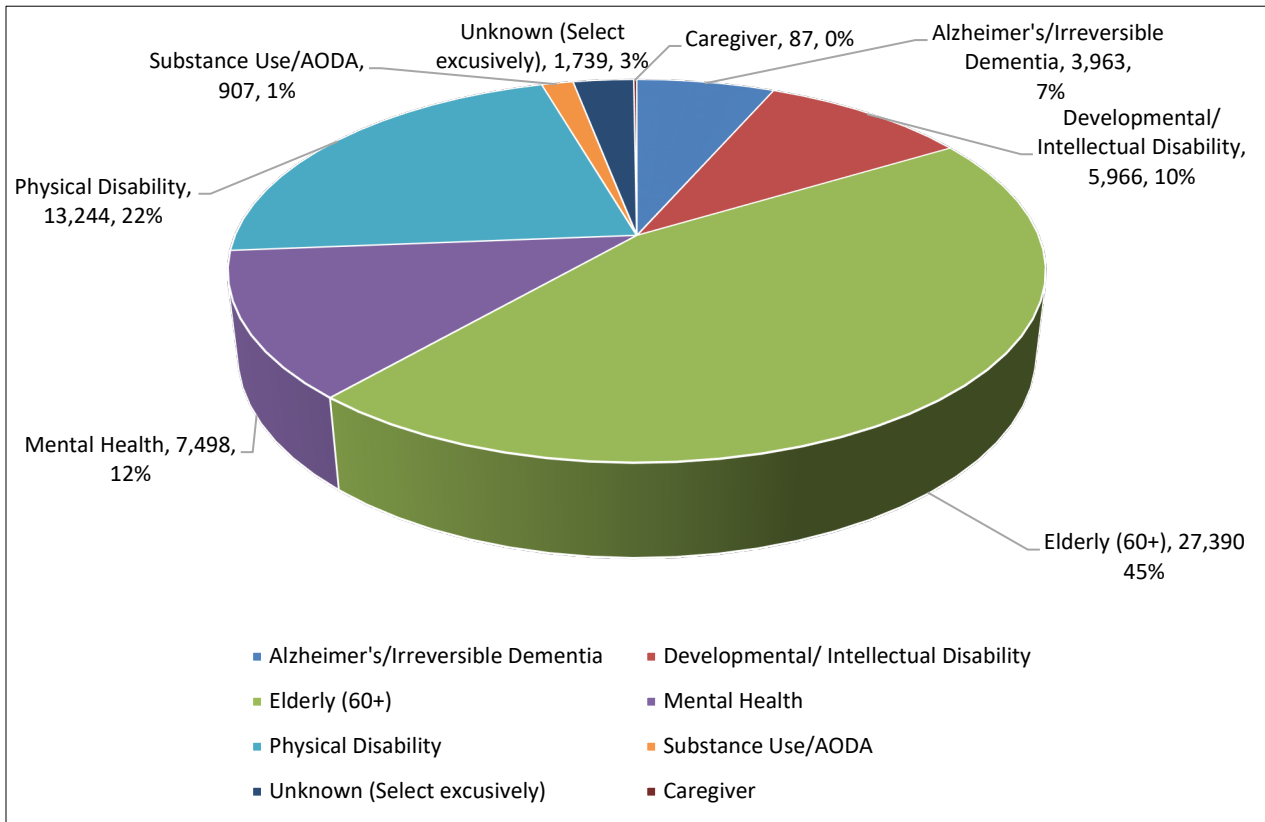


ADRC Data January 2022 to December 2022

Target Group

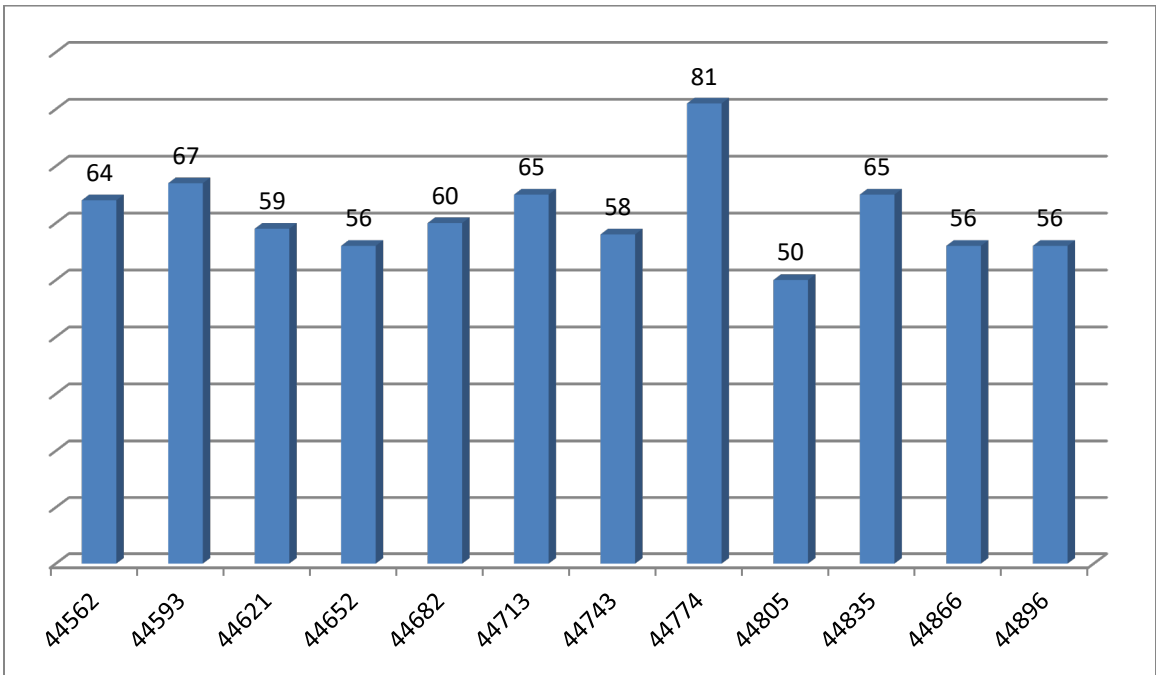
3,963	Alzheimer's/Irreversible Dementia
5,966	Developmental/ Intellectual Disability
87	Caregiver
27,390	Elderly: 60 or older
7,498	Mental Health
13,244	Physical Disability
907	Substance Use/AODA
1,739	Unknown (Select exclusively)
45,939	Total

*Some customers fall into multiple target groups



Email Inquiries

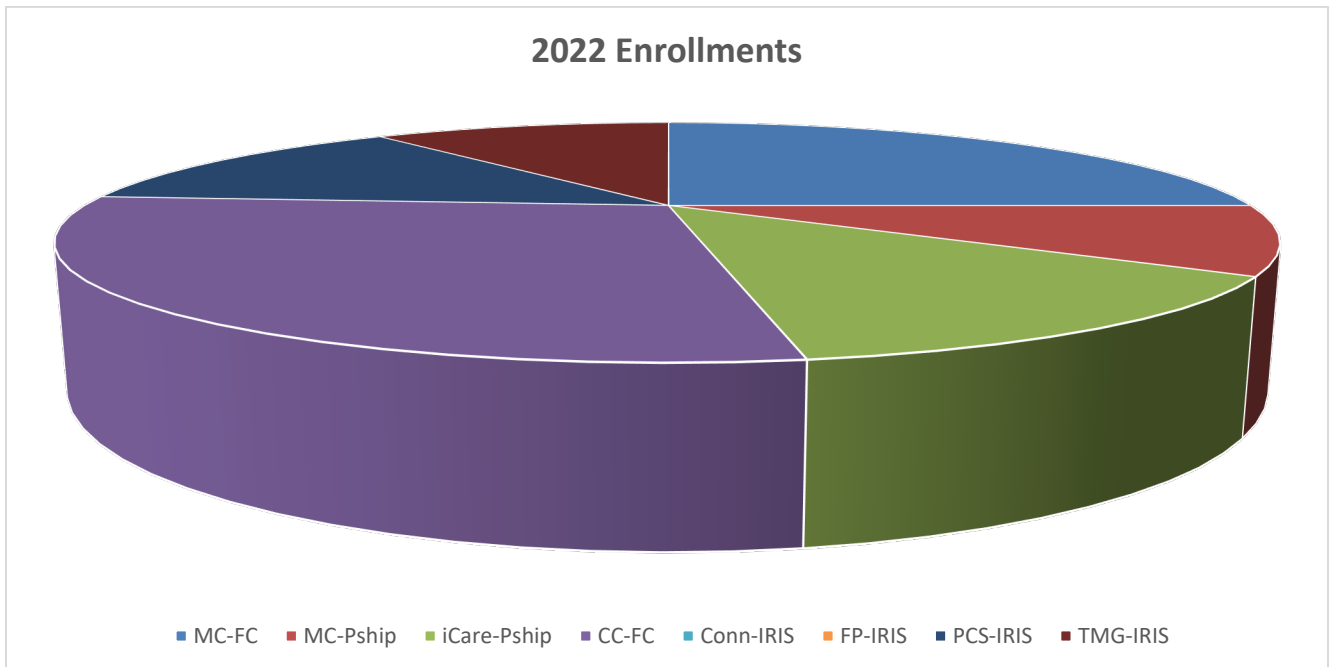
# Email Inquiries	Month
64	January 2022
67	February 2022
59	March 2022
56	April 2022
60	May 2022
65	June 2022
58	July 2022
81	August 2022
50	September 2022
65	October 2022
56	November 2022
56	December 2022



ADRC Data January 2022 to December 2022

2022 ENROLLMENTS

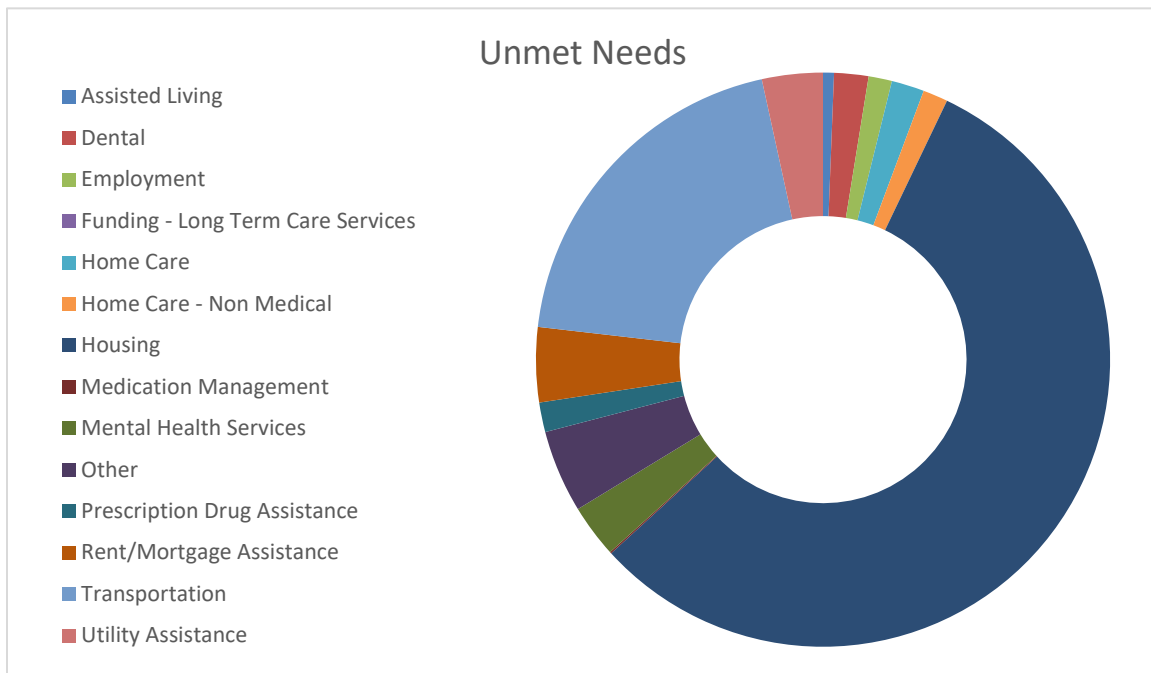
	Jan 2022	Feb 2022	March 2022	April 2022	May 2022	June 2022	July 2022	Aug 2022	Sept 2022	Oct 2022	Nov 2022	Dec 2022
MC-FC	19	26	32	30	24	31	28	26	21	25	30	31
MC-PShip	7	16	10	11	7	9	10	10	8	9	5	11
iCare-PShip	10	9	11	6	6	9	7	10	8	12	10	5
CC-FC	22	27	24	27	23	19	21	18	32	29	28	21
Conn-IRIS	0	2	1	1	0	2	0	1	0	3	1	2
FP-IRIS	0	0	0	1	3	1	0	1	1	0	0	0
PCS-IRIS	10	10	4	11	8	5	4	5	12	13	11	2
TMG-IRIS	8	10	13	14	14	12	9	9	15	17	19	11
TOTAL YEAR-TO-DATE	76	176	271	372	457	545	624	704	801	909	1013	1096



ADRC Data January 2022 to December 2022

UNMET NEEDS – 2022

UNMET NEEDS	#
Accessible housing	26
Assisted Living (AFH, CBRF, RCAC)	7
Dental	22
Employment	15
Funding – Long Term Care Services	0
Home Care	21
Home Care – Non-Medical	16
Housing	639
Medication Management	1
Mental Health Services incl Case Mgmt	34
Other	53
Prescription Drug Assistance	19
Rent/Mortgage Assistance	48
Transportation	225
Utility Assistance	39



ADRC Data January 2022 to December 2022

TOPIC CATERGORIES DISCUSSED:

Topic Category	No. of Calls
Abuse and Neglect	593
Action Plan	243
Adaptive Equipment	775
Addictions	47
ADRC or Tribal Complaint	21
Alzheimer's and Other Dementia	1,015
Ancillary Services	152
Animals	44
Assisted Living (AFH, CBRF, RCAC)	2,413
Budget Assistance	218
Caregiving - Adult CG of Elder or Early Dementia	861
Caregiving - Elder CG of Child or Disabled Adult	83
Caregiving - Non-Elder CG of Dsbld Non-Elder Adult	74
Community I&R	3,805
Complaints (other)	696
COVID-19	435
Education	125
Emergency Preparedness	15
Employment	581
End of Life	286
Food	793
Health	917
Health Promotion	302
Home Services	3,924
Housing	2,641
Income Maintenance	582
Insurance	1,656
Legal Services	1,702
MDS Section Q Referrals	1,183
Medical Home Care	112
Mental Health	922
Non MDS Section Q	80
Nursing Home	1,123
Other	1,522

ADRC Data January 2022 to December 2022

Public Benefits LTC Programs	25,879
Public Benefits, Other	10,461
Recreation/Socialization	87
Referral for Evaluation	10
Referral for Financial-Related Needs	322
Referral for Private Pay Options	765
Request for Resource Materials by Organization	11
Safety	103
Taxes	148
Transportation	1,108
Veterans	460
Volunteer Opportunities	19
Voting	10
Wellness Check	26
Youth Transition	2,694
Total	69,324