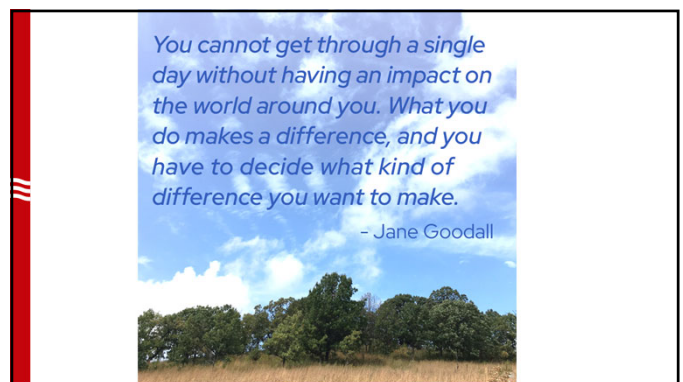


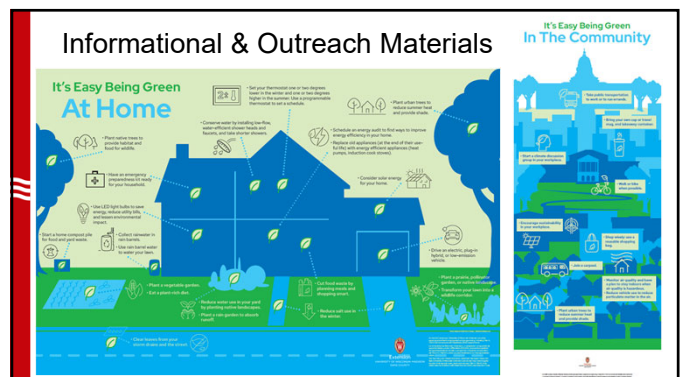
Purpose

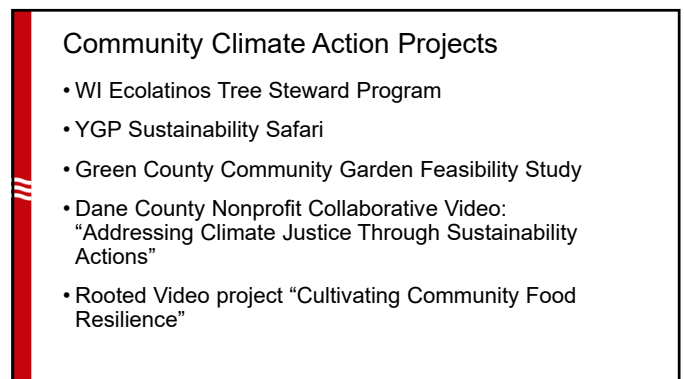
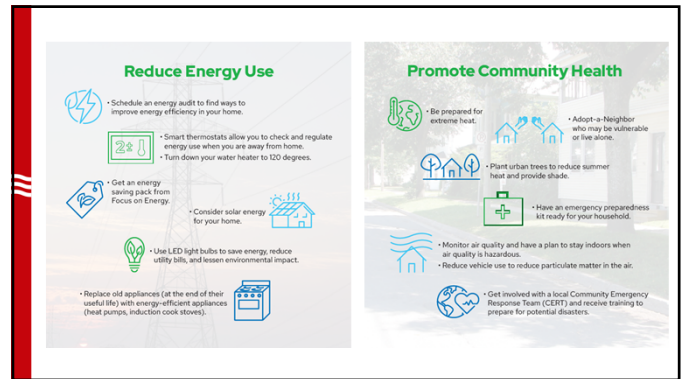
- Provide educational programs and facilitate community engagement around climate mitigation and resilience.
- Improve access to resources and information for underserved communities.
- Highlight the sustainability/climate adjacent work of nonprofit organizations led by or serving BIPOC audiences.



Project Components

- 1) *Development of informational & outreach materials*
- 2) *Engagement strategies*
- 3) *Community Climate Action Projects*
- 4) *Sharing impact*
- 5) *Evaluation*





WI Ecolatinos Tree Stewards Program



Tree Planting



Tree Identification

Deciduous trees have two types of branches:

Alternate Branching

► Leaves and side branches:

SPR

SPR

► For

Alternate branching trees have either compound or :

Simple leaves on alternate branching trees

different ways:

Congratulations! You've identified a Aspen

Specifically, the Quaking Aspen (*Populus tremuloides*)



Lobed Leaves

► For either pointed or rounded lobes, go to page #24

► For either pointed or rounded lobes, go to page #24

► For either pointed or rounded lobes, go to page #24

► For either pointed or rounded lobes, go to page #24

► For either pointed or rounded lobes, go to page #24

► For either pointed or rounded lobes, go to page #24

► For either pointed or rounded lobes, go to page #24

► For either pointed or rounded lobes, go to page #24

► For either pointed or rounded lobes, go to page #24

► For either pointed or rounded lobes, go to page #24

► For either pointed or rounded lobes, go to page #24

► For either pointed or rounded lobes, go to page #24

► For either pointed or rounded lobes, go to page #24

► For either pointed or rounded lobes, go to page #24

► For either pointed or rounded lobes, go to page #24

► For either pointed or rounded lobes, go to page #24

► For either pointed or rounded lobes, go to page #24

► For either pointed or rounded lobes, go to page #24

► For either pointed or rounded lobes, go to page #24

► For either pointed or rounded lobes, go to page #24

► For either pointed or rounded lobes, go to page #24

► For either pointed or rounded lobes, go to page #24

► For either pointed or rounded lobes, go to page #24

► For either pointed or rounded lobes, go to page #24

► For either pointed or rounded lobes, go to page #24

► For either pointed or rounded lobes, go to page #24

► For either pointed or rounded lobes, go to page #24

► For either pointed or rounded lobes, go to page #24

► For either pointed or rounded lobes, go to page #24

► For either pointed or rounded lobes, go to page #24

► For either pointed or rounded lobes, go to page #24

► For either pointed or rounded lobes, go to page #24

► For either pointed or rounded lobes, go to page #24

► For either pointed or rounded lobes, go to page #24

► For either pointed or rounded lobes, go to page #24

► For either pointed or rounded lobes, go to page #24

► For either pointed or rounded lobes, go to page #24

► For either pointed or rounded lobes, go to page #24

► For either pointed or rounded lobes, go to page #24

► For either pointed or rounded lobes, go to page #24

► For either pointed or rounded lobes, go to page #24

► For either pointed or rounded lobes, go to page #24

► For either pointed or rounded lobes, go to page #24

► For either pointed or rounded lobes, go to page #24

► For either pointed or rounded lobes, go to page #24

► For either pointed or rounded lobes, go to page #24

► For either pointed or rounded lobes, go to page #24

► For either pointed or rounded lobes, go to page #24

What we are learning

- Funding helps
- Outreach & education are starting points, but ongoing engagement is essential
- Extension works best when in partnership with community partners
- There's no easy fixes; this work needs to be ongoing!
- It takes ALL of us!!!

