



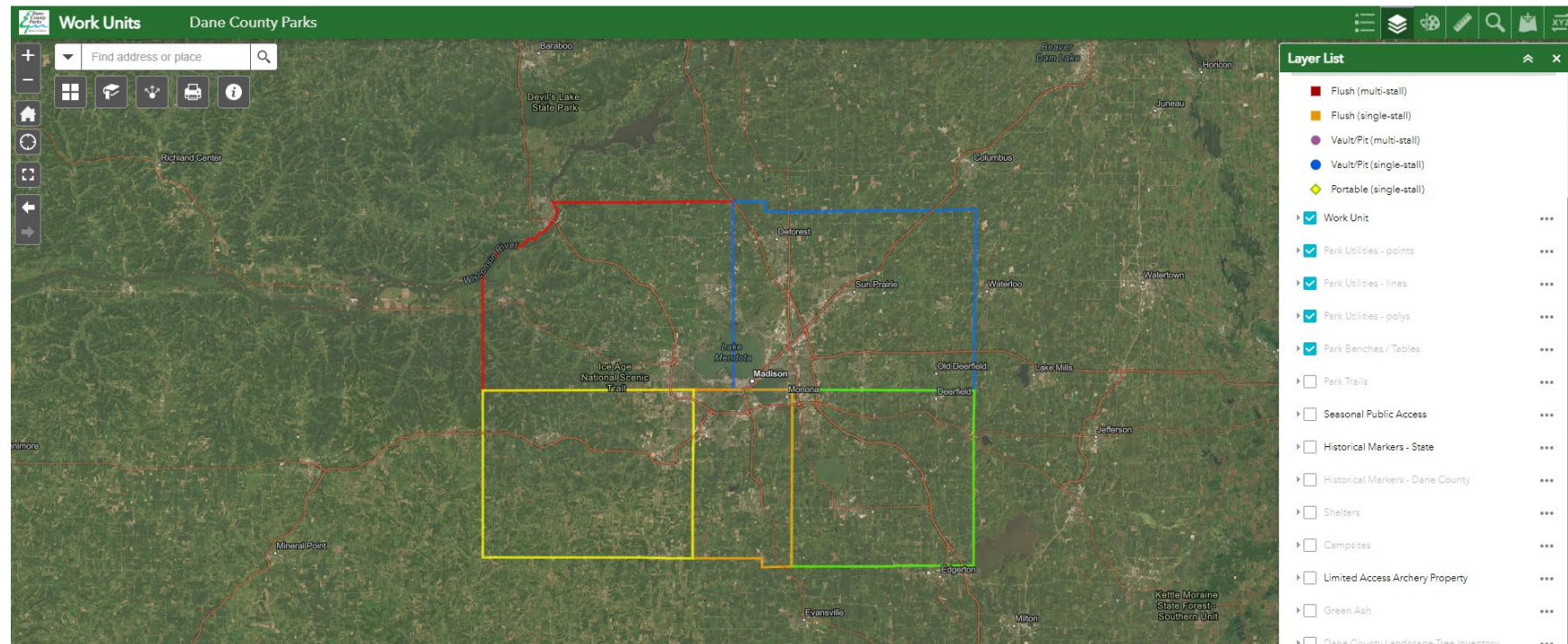
Land & Water Resources 2025 Budget Request

Lower Yahara River Trail Phase II – Fish Camp County Park to Lake Kegonsa State Park



Land & Water Resources Department Administration Division

- Public Contact (phone and counter service)
- Clerical & Accounting Services
- GIS Services
- Real Estate Services

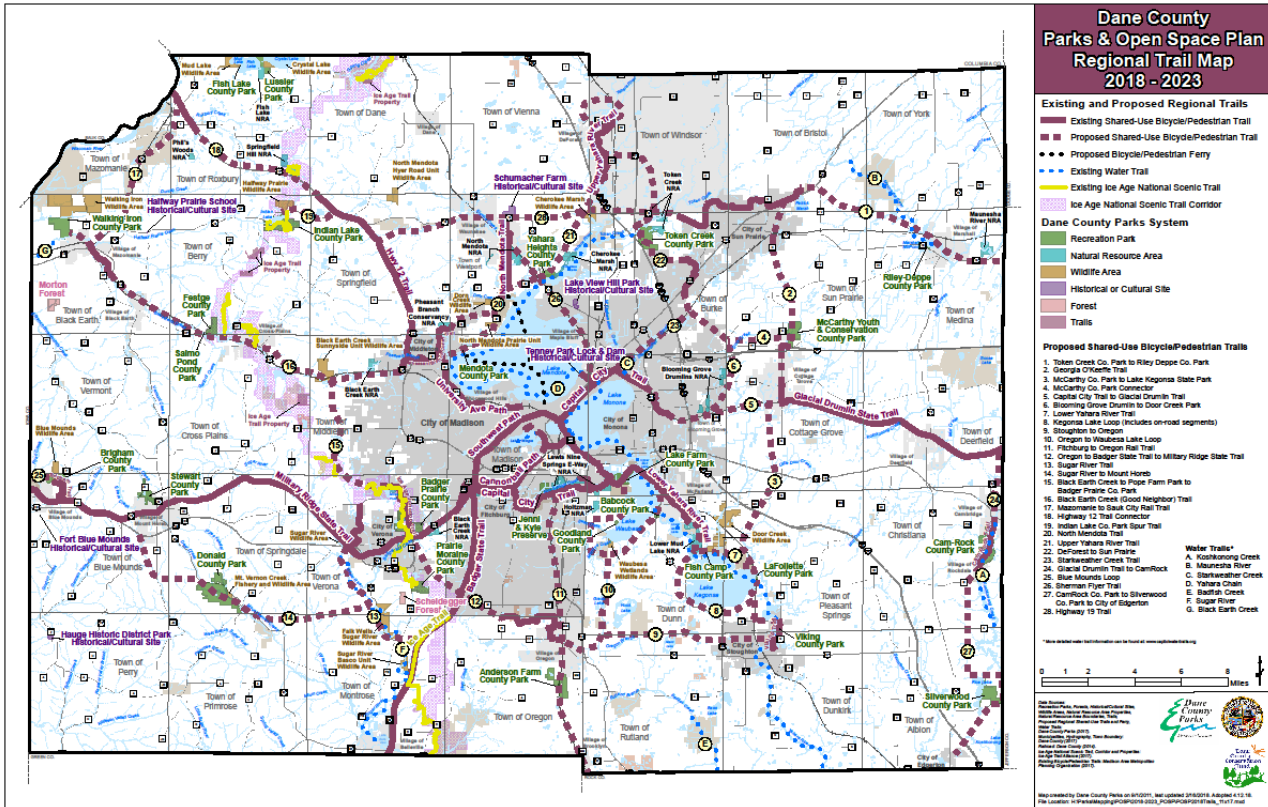


Land & Water Resources Department

Dane County Parks Division

Dane County Parks welcomes nearly 5 million visitors annually and manages over 18,000 acres of land, including:

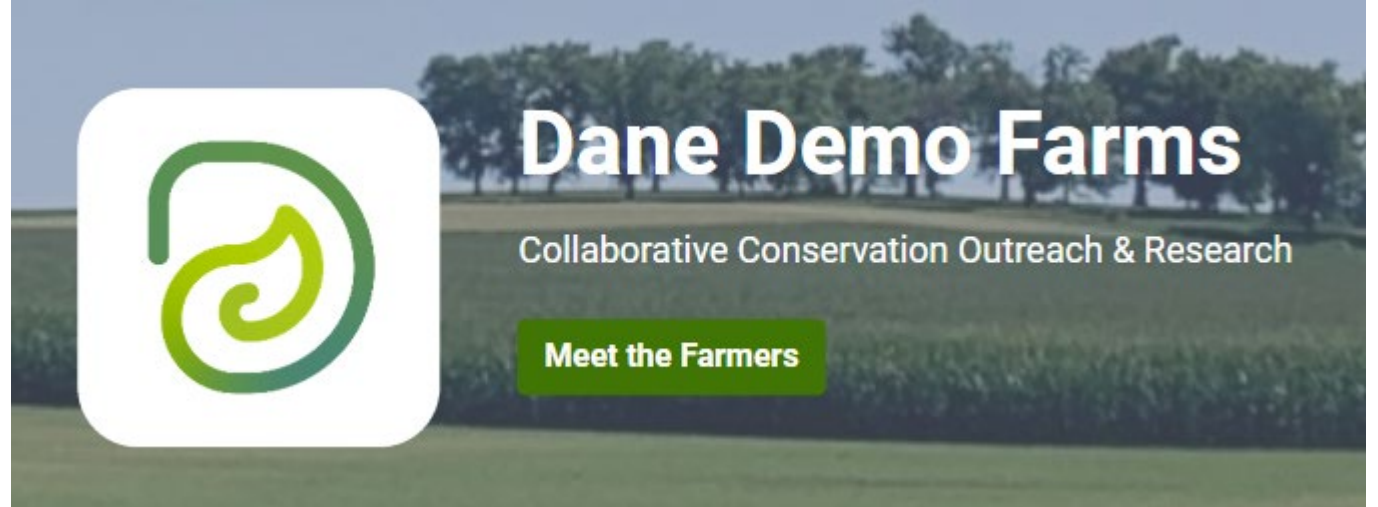
- 25 Recreation Parks (including 8 Dog Parks)
- 20 Wildlife Areas
- 14 Natural Resource Areas
- 4 Historical or Cultural Sites
- 2 Forests
- Over 100 miles of trails (bike, equestrian and cross-country ski trails)
- Over 3,000 acres of conservation and streambank easements
- 5 campgrounds and multiple adult and youth group camping sites
- Lussier Family Heritage Center



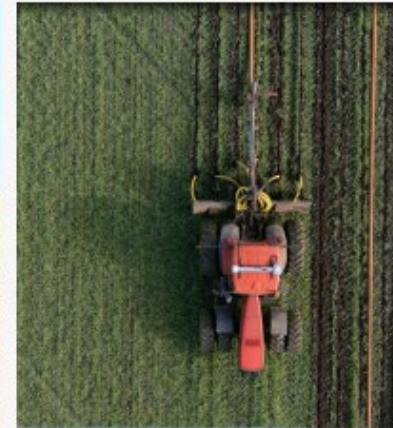
Land & Water Resources Department

Land Conservation Division

- Cost-share programs to help landowners and farmers implement conservation practices to:
 - Reduce soil erosion
 - Improve water infiltration
 - Improve water quality
 - Build soil health



Collecting soil samples in a research plot.



Manure applied in-furrow via low-disturbance with a dragline.



Press event at the Sime farm, a Dane Demo Farms participant.

Land & Water Resources Department

Lake Management Division

- Aquatic Plant Management
- Yahara Sediment Removal
- Aquatic Invasives Management
- County Beach Management
- County Dam Management



Dredge equipment removes sediment and obstructions from the riverbed.

Land & Water Resources Department

Water Resource Engineering

- Erosion Control
- Stormwater Control
- Urban Water Quality Grant Program
- Stormwater management training
 - Operation Fresh Start
 - Internal



The OFS crew cleared woody vegetation from the bioretention basins at Babcock County Park.



They also cleared larger trees that had grown up on some of the basin berms.



After clearing out undesirable vegetation, they planted native plant plugs to fill in the gaps.

Land & Water Resources Department

Watersheds & Ecosystem Services

- Improve water quality
 - Adaptive Management
 - Legacy Sediment Removal
- Build flood resilience
 - Wetland restoration
- Increase carbon sequestration
 - Continuous Cover Program
 - Habitat Restoration



Collecting soil samples using a hydraulic coring machine mounted to the bed of a utility train vehicle.

Operating Budget Adjustments

1. Increased Park Fee Revenues

- Violation Fees
- Mountain Bike Trail
- Boat Launch
- Dog Park

2. Increased Heritage Center Operating Revenue

3. Increased LTE Lines

- Park Services
- Heritage Center Education
- Have ongoing needs for seasonal staff in parks and lake management

Capital Budget Requests

Project	Amount
Conservation Fund	\$10,000,000
Glacial Drumlin Trail Phase I*	\$5,400,000
Dog Park Improvements	\$100,000
Yahara Clean Implementation	\$500,000
Mendota Park Improvements	\$700,000
New Property Stabilization	\$350,000
Capital Park Improvements	\$400,000
Picnic Tables & Grills	\$25,000
Buoys and Lights	\$10,000

* Funding request for 2025 has been withdrawn

Capital Budget Requests, continued

Project	Amount
Lake Management Parts	\$150,000
Park Accessibility Improvements	\$825,000
Robertson Road Improvements	\$400,000
Vehicle & Equipment Replacement	\$530,000
Tree Planting	\$100,000
Conservation Practice Implementation	\$500,000
Wetland Restoration	\$600,000
Total	\$20,590,000

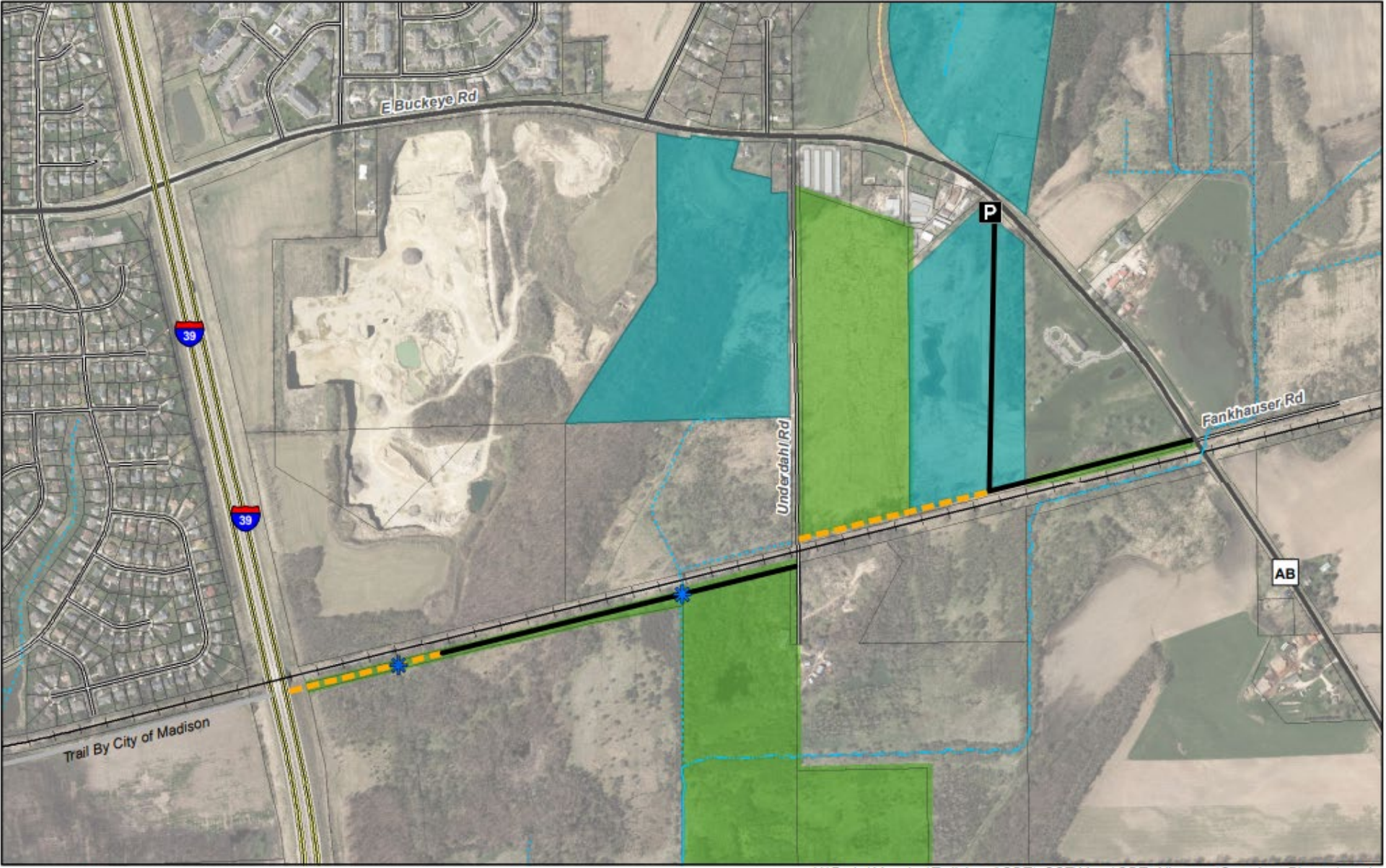
Civic Engagement Examples

- Women & Gender Minorities Chainsaw Classes and Workdays
- Wisconsin Women in Conservation Partnership to Support Female Landowners
- Mastermind Dinner for Farm Women
- Dane Demo Farms
- Community center partnerships for outdoor learning
 - Bridge Lakepoint Waunona
 - Bayview Foundation*
 - Centro Hispano
 - Kennedy Heights
 - Lussier Community Education Center
 - The Neighborhood House
 - Mazomanie Afterschool Program
 - Vera Court
- Direct mailing to landowners on Yahara Chain of Lakes
- Continued partnership with Operation Fresh Start
 - Conservation Crews
 - Graduate Crew
 - Forestry
 - Stormwater



Community Center Get Outside! program participants sledding at McCarthy County park

**\$15,300 currently earmarked in budget for Bayview Foundation, would like funding available for all community centers.*



H:\Parks\Mapping\TrailsLand\GDTtoCCT\Maps\GDT_AlignmentOverview_Phase 1.mxd



Glacial Drumlin Trail

Phase One Alignment

03/22/2018

Legend

- - - Proposed Boardwalk
- Proposed At-Grade Trail
- P Proposed Parking Lot
- ✳ Water Crossing
- Dane Co. Lands
- DNR Lands/Easements
- + Railroad

NORTH

0 250 500
Feet