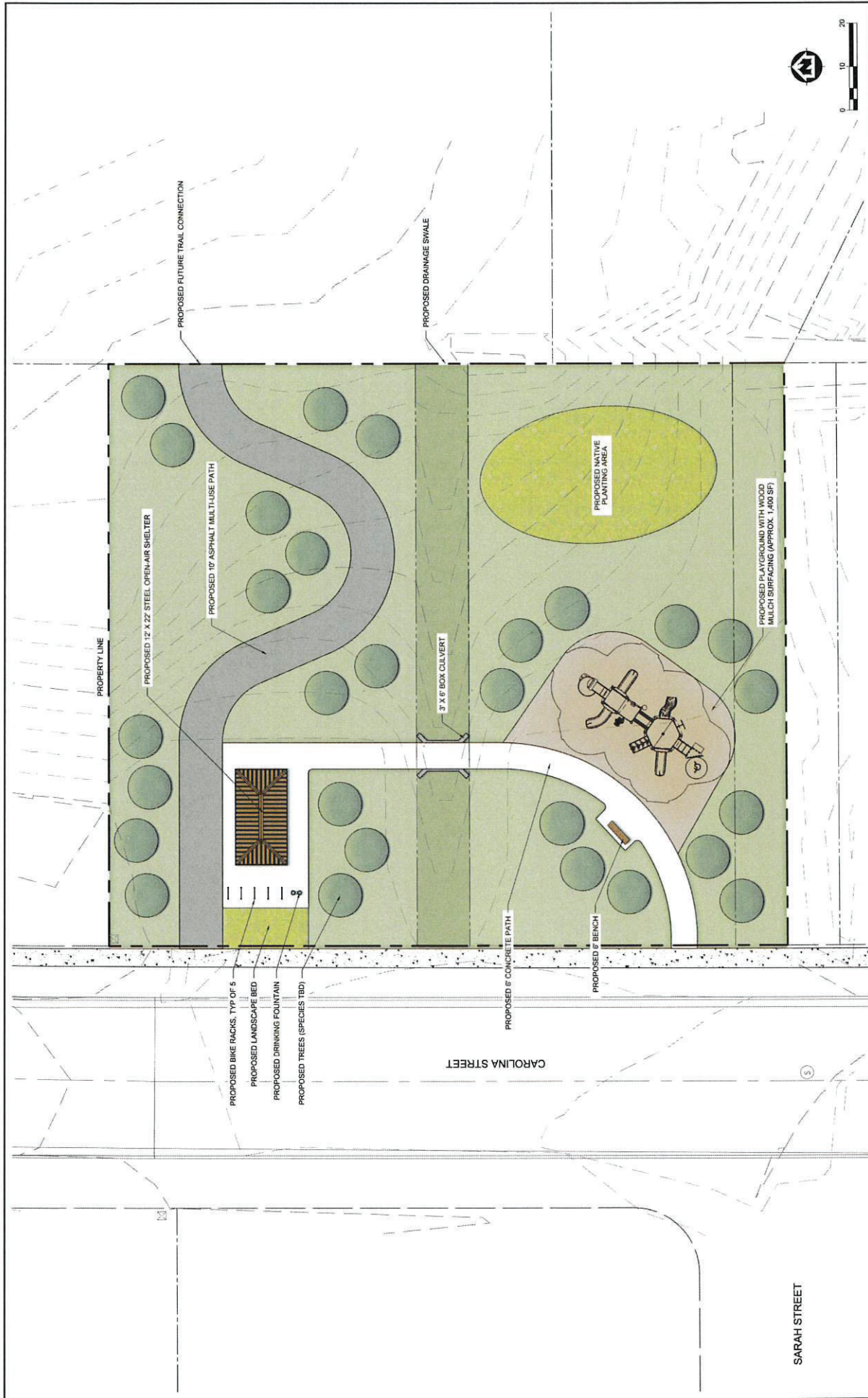


[illegible]

| Existing Features | Proposed Features |
|------------------------|------------------------------|
| Gravel Path | Shared-use Path |
| Paved Path | (paved, gravel or boardwalk) |
| On Street Bike Lane | Sidewalk Addition |
| No Sidewalk Both Sides | Bike/Pedestrian Crossing |
| Village Limits | Street/Path Lighting |



| | | | | |
|---|---|-------------------------------------|---|---|
| <div> <div>PROJECT DATE: 11/10/2020</div> <div>DESIGNED BY: MSA</div> <div>CHECKED BY: MSA</div> <div>IN CHARGE: MSA</div> </div> | <div> <div>NO.</div> <div>DATE</div> <div>REVISION</div> </div> | <div> <div>PRELIMINARY</div> </div> | <div> <div>DATE: 11/10/2020</div> <div>PROJECT: 2020-0001</div> <div>PROJECT NAME: BELLEVILLE - CAROLINA ST PARK</div> <div>PROJECT LOCATION: VILLAGE OF BELLEVILLE, DANE AND GREEN COUNTY, WI</div> </div> | <div> <div>PROJECT NO: 00372116</div> <div>DATE: 11/10/2020</div> <div>PROJECT NAME: BELLEVILLE - CAROLINA ST PARK</div> <div>PROJECT LOCATION: VILLAGE OF BELLEVILLE, DANE AND GREEN COUNTY, WI</div> </div> |
|---|---|-------------------------------------|---|---|

MSA

ENGINEERING | ARCHITECTURE | SURVEYING

1375 N. KILBUCK RD., SUITE 200, WAUKESHA, WI 53186

(262) 542-2779 | www.msa-ps.com