



Dane County Department of Administration Public Works Engineering Division



Todd Draper
Public Works Director



*There are currently 45 Active Public Works Projects.

*In the last year, 17 projects have been completed.

- CCB Planter and Retaining Wall Repairs
- Job Center Carpet Replacement
- Courthouse Remote Decent System
- Phase 1 Parking Ramp Restoration
- Darren Marsh Facility Envelope Study
- Lyman Andersen Greenhouse
- Walking Iron Wetland Restoration
- Goodland Park Roof Replacement
- Albion & Verona Highway Buildings
- District Attorney Space Needs Study
- County Clerk Space Needs Study
- Veteran Services Office Renovation
- CNG Fueling Upgrades
- Token Creek Shelter and Bathroom Roofs
- Schumacher Barn Roof Replacement
- Goodland Park Tennis Court Improvements
- Lake Farm Shelter #3 Roof



* Eleven projects are nearing completion

- CCB Main Entrance Roof Replacement
- Courthouse Roof Replacement
- BPHCC Boiler Replacement
- Consolidated Food Service – Grease Trap Replacement
- McCarthy Park Shelter
- AEC Pavillions Electrical Upgrades
- Emergency Management Facility Renovation
- Yahara River Sediment Removal (Lafollette to Cty Hwy B)
- Lyman Andersen Parking Lot Repave/ Redesign
- NPO Parking Lot Resurfacing
- BPHCC Parking Lot/ Raingarden/ Sidewalk Repair

*34 Currently Active Projects

- City County Building Window Replacement/ HVAC Control
- Public Safety Communications (911) Facility Design
- Medical Examiners CT Scanner remodel
- Jail Consolidation Project
- Parking Ramp Lighting Upgrades
- Parking Ramp Prevention Screening
- Courthouse Roof Replacement
- Babcock Boat Launch Redesign
- Lower Yahara River Trail – Phase 2
- Albion Tow Plow Garage construction
- Westport Training Center addition
- Heart of the Zoo Giraffe Exhibit
- Verona Tow Plow Garage Construction
- Northport Offices Freight Elevator Modernization
- Robertson Rd Building Envelope (design)
- East District Campus CNG Panel Replacement
- Fish Camp Kayak Launch Improvements
- Consolidated Food Service Photovoltaic System Connection
- Information Management Cooling System
- City county Building Air Handling Unit 7 Replacement
- County Clerk Facility Evaluation
- Parking Ramp Restoration
- Parking Ramp Security Camera Install
- Consolidated Foods Grease Trap Install
- District Attorney Office Remodel (design)
- Public Safety Bldg Sallyport Garage Floor Resurfacing
- Walking Iron Streambank Restoration
- CCB/ DCCH Emergency Generator Replacement
- Saddlebrook envelope restoration
- Alliant Energy Ctr Pavillion 1 Plaza Redevelopment
- Alliant Energy Ctr Exhibition Hall Chiller Replacement (design)
- Alliant Energy Ctr Campus Lighting Upgrades (design)
- Alliant Energy Ctr HVAC Controls Upgrades (design)
- Alliant Energy Center Pavillions Fire Suppression Install

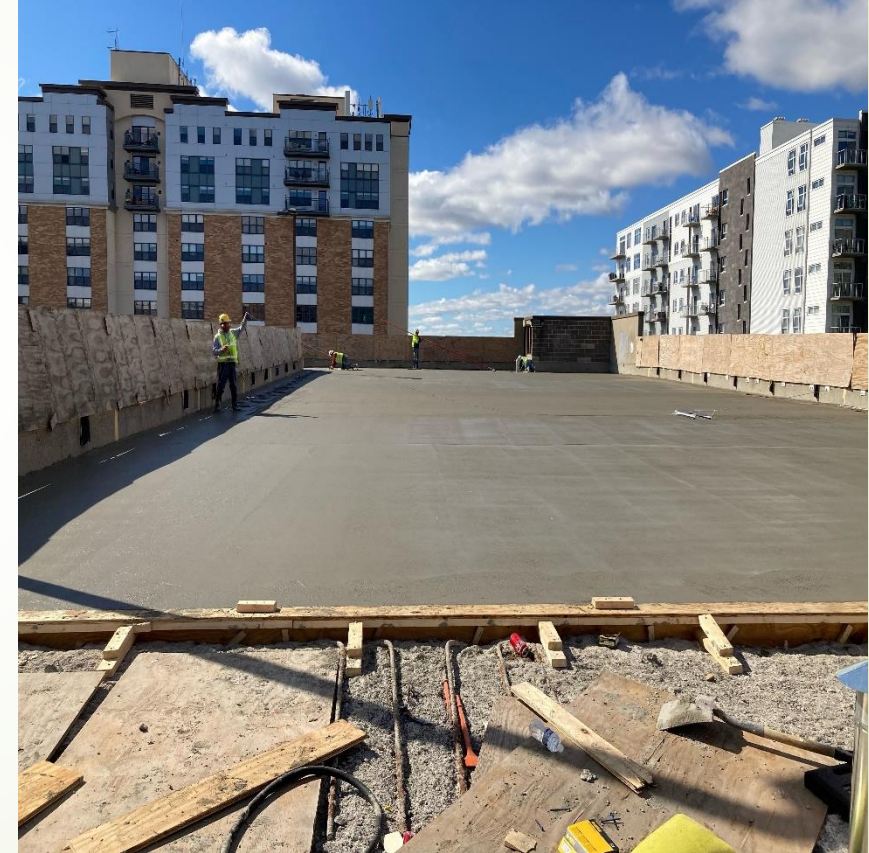
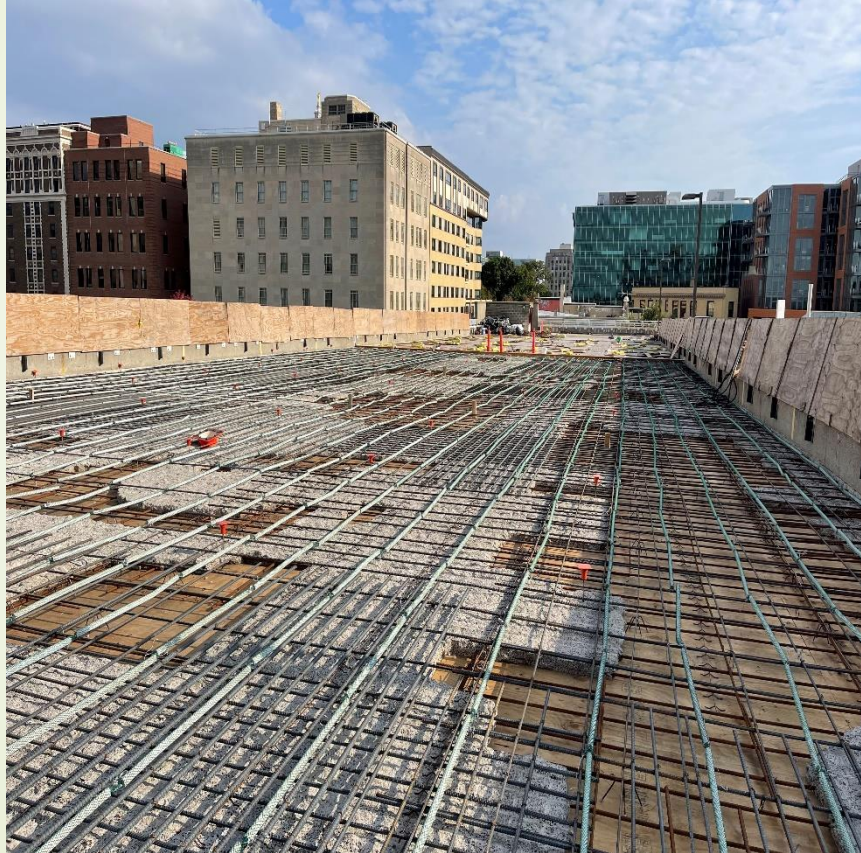
Lyman Andersen Greenhouse Construction



Courthouse Remote Decent System



Phase 1 CSS Parking Ramp Restoration



Lake Farm Park Shelter #3 Roof



Token Creek Shelter #5 & Bathroom Roofs



City County Building Planter and Retaining Wall Restoration



Albion and Verona Highway Vehicle Storage Buildings



Veteran Services Space Remodel

