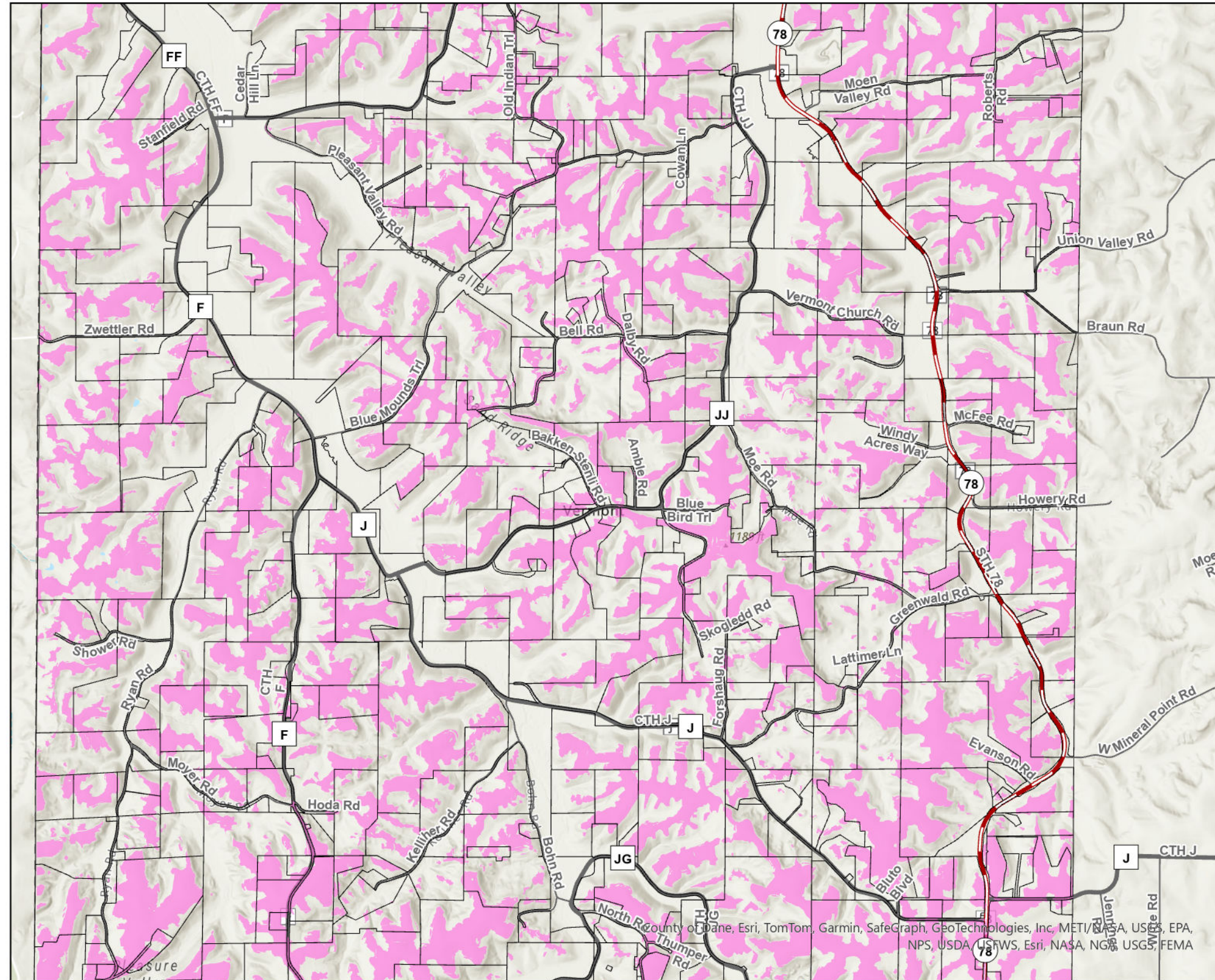


Town of Vermont

NR-I (Natural Resource - Identification) Overlay Zoning

Petition DCPREZ-2024-12103



- Landowner Boundaries
- Proposed NR-I overlay zoning

Municipalities

- City
- Village
- Town
- Major Lake

Road Centerlines

- Interstate Highway
- US Highway
- State Highway
- County Highway
- Local Road
- Restricted Access
- Ramp
- Named Private Road

Proposed NR-I zoning would correspond to "Ridgetop Protection Areas" as defined in the Town of Vermont / Dane County Comprehensive Plan. The town/county plan defines "Ridgetop Protection Areas" as any location that is located above the shoulder of the ridge. The shoulder is the point at which the local slope changes from greater than 20% to less than 20%.

Within these areas, new residential structures are limited to a maximum of 28 feet in height.



County of Dane, Esri, TomTom, Garmin, SafeGraph, GeoTechnologies, Inc, METI, NOAA, USGS, EPA, NPS, USDA, USFWS, Esri, NASA, NOAA, USGS, FEMA