

2024 Process For Dane County Historical Marker Project



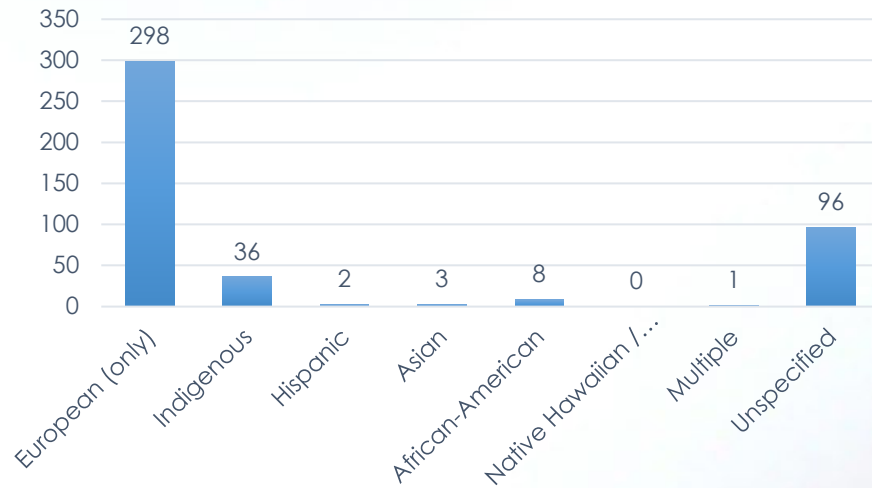
Introduction

- highlight people and events that celebrate communities that are underrepresented in the historical record of [Dane County](#).
- Importance of recognizing and preserving cultural heritage in our community.

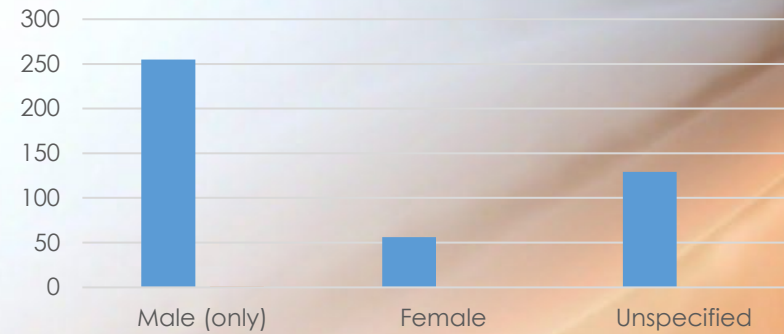
Who is “Under-represented?”

- 446 existing historical markers, per hmdb.org

Race / Culture



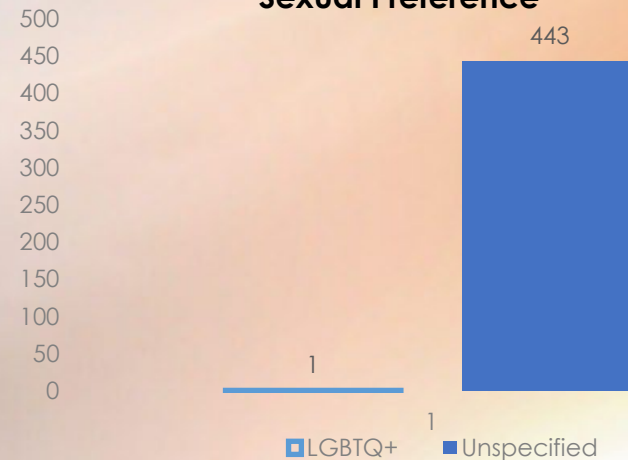
Gender



RELIGION



Sexual Preference



Project Time Line

- **Nominations** : Published a survey to gather community input on sites. June ,2024
- **Meeting with stakeholders** . June 2024- October 2024
- **Outreach Emails and Press Release and follow up emails** . June 2024-Nov2024
- **Site visit for 42 nominations.** June 2024 – October 2024
- **Set up the Budget** November 2024
- **Establish the Heritage preservation commission** November 2024
- **Design a contract for manufacture and installation** TBD
- **Public Hearing:** Hosted a hearing to allow direct community feedback. TBD

Site Visit Process

- When conducting site visits to nominated places for the Historic Marker Program, the process includes the following steps to ensure a thorough and informed assessment of each nomination:
 - 1. Review of Submitted Information:** After receiving a nomination, the team carefully reviews the submitted materials. This includes examining the description of the site, its historical significance, and any accompanying documentation provided by the nominator.
 - 2. On-Site Evaluation:** A visit to the nominated site is conducted to gather firsthand observations. During the visit, the team:
 - 1. Photographs the Site:** Captures images of the site and its surroundings to document its current state and context.
 - 2. Assesses Alignment with Submitted Information:** Compares the details observed on-site with the information provided in the nomination form.
 - 3. Evaluates Accessibility and Visibility:** Considers the site's accessibility to the public and its potential as a location for an interpretive marker.
 - 3. Engagement with the Nominator:** If additional details or clarifications are required, the nominator is contacted for further information. This step ensures accuracy and enhances understanding of the site's historical or cultural relevance.

Story Map Website Development

- The [story map website](#) serves as an engaging tool to document and share detailed information about each historic site, providing a centralized platform for public access.

Dane County Historical Markers

📍 ...

Dane County Historical Markers

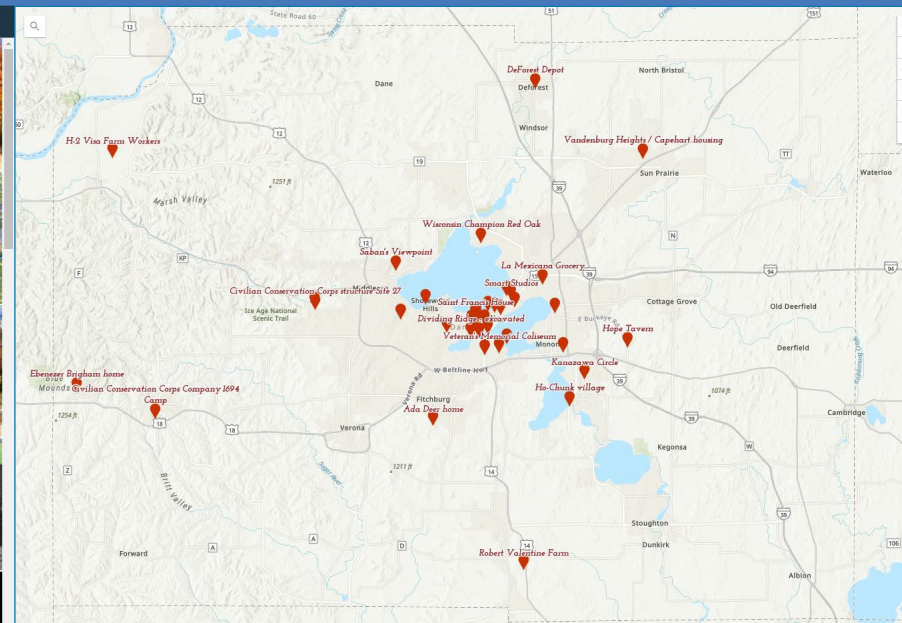
Timeline of events associated with 2024 nominations.

Brian Standing, Aaron Levine and Duha Jamal
November 13, 2024

Dane County Timeline of Events

Dane County Historical Markers 2024 Nominations

Historic Marker Nominations 20...



Next Steps By **Heritage preservation commission**

- Hold public meeting
- Rank the sites
- Recommend six sites to receive markers
- Approval of marker design
- Execute contract for marker manufacture and installation

Ranking Model to Select Six Initial Historic Marker Sites

- To narrow down and select six sites out of the 42 nominated for historic markers, a ranking model can be implemented based on specific criteria. Each site will be scored on a scale (e.g., 0–10) for each criterion, and the total score will determine its rank. Sites with the highest scores will be prioritized for selection.
- **Proposed Criteria and Weights**
 - 1. Public Accessibility (Weight: 30%)**
 1. High score for sites located in public areas or spaces frequently visited by the community.
 2. Moderate score for semi-public spaces.
 3. Low score for private properties with limited access.
 - 2. Public ownership/ Ownership by Dane County (Weight: 20%)**
 1. High score for sites owned or managed by Dane County to ensure easier maintenance and permissions.
 - 3. Safety (Weight: 15%)**
 1. High score for sites in safe areas with minimal risk of vandalism or harm to visitors.
 - 4. Presence of Sidewalks and Infrastructure (Weight: 15%)**
 1. High score for sites with accessible sidewalks, parking, and other visitor-friendly infrastructure.
 - 5. Historical, Cultural, or Social Significance (Weight: 20%)**
 1. High score for sites with strong historical, cultural, or social relevance, especially if underrepresented.

Scoring and Selection Process

1. Assign a score (0–10) to each site for every criterion based on the information gathered during nominations and site visits.
2. Multiply the score by the criterion weight to calculate the weighted score.
3. Sum the weighted scores across all criteria for a total score per site.
4. Rank the sites by their total scores and select the top six for historic markers.

Example of Scoring

Site Name	Public Access	County-Owned	Safety	Sidewalks	Significance	Total Score
Site A	9	10	8	7	9	8.6
Site B	7	8	9	10	8	8.4
Site C	5	7	6	8	10	7.2

Questions and Feedback

Brian Standing, Senior Planner, Dane County Planning and Development
Standing.Brian@danecounty.gov

Duha Jamal, Planning Assistant, University of Wisconsin DPLA
Jamal.duha@danecounty.gov