

LIDAR archaeology applications

Dane County Heritage Preservation Commission

November 26, 2024

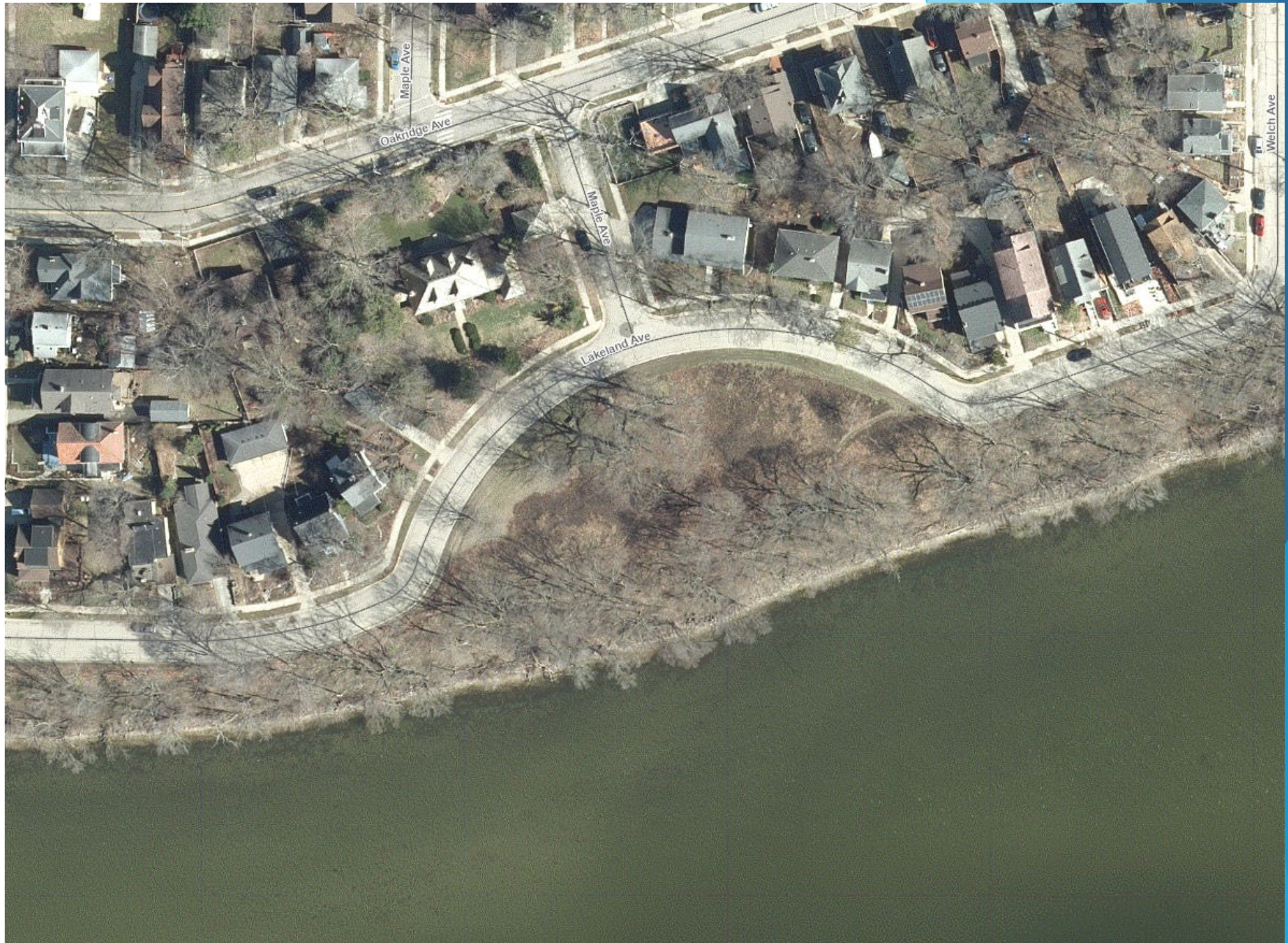
2025 UW Department of Planning and Landscape Architecture / Dane County Planning and Development Project Proposal

Work with

- ▶ Dane County Heritage Preservation Commission
- ▶ Ho-Chunk Nation
- ▶ Wisconsin Historical Society
- ▶ UW Department of Planning and Landscape Architecture (DPLA)
- ▶ UW Department of Information Technology (DoIT)
- ▶ and Dane County Land Information Office (DCLIO)

to develop a machine learning tool to scan digital elevation models to identify potential effigy mounds and other archaeological resources.

Elmside
Park
Mounds
2022 Aerial
Photography



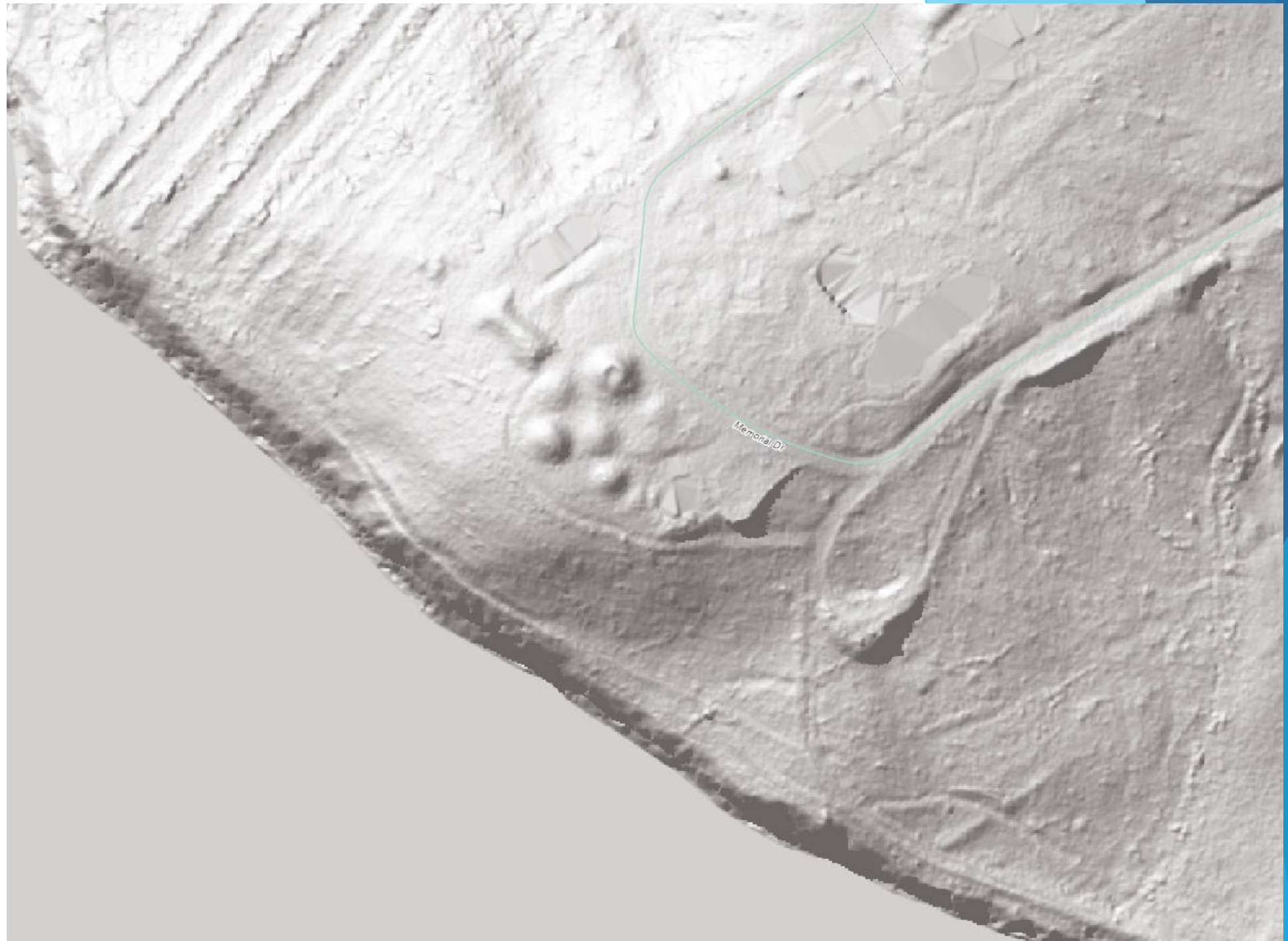
Elmside Park Mounds 2022 Digital Elevation Model (from LIDAR)



Mendota
Mental
Health
(Farwell's
Point)
Mounds
2022 Aerial
Photography



Mendota
Mental
Health
(Farwell's
Point)
Mounds
2022 Digital
Elevation Model
(from LIDAR)

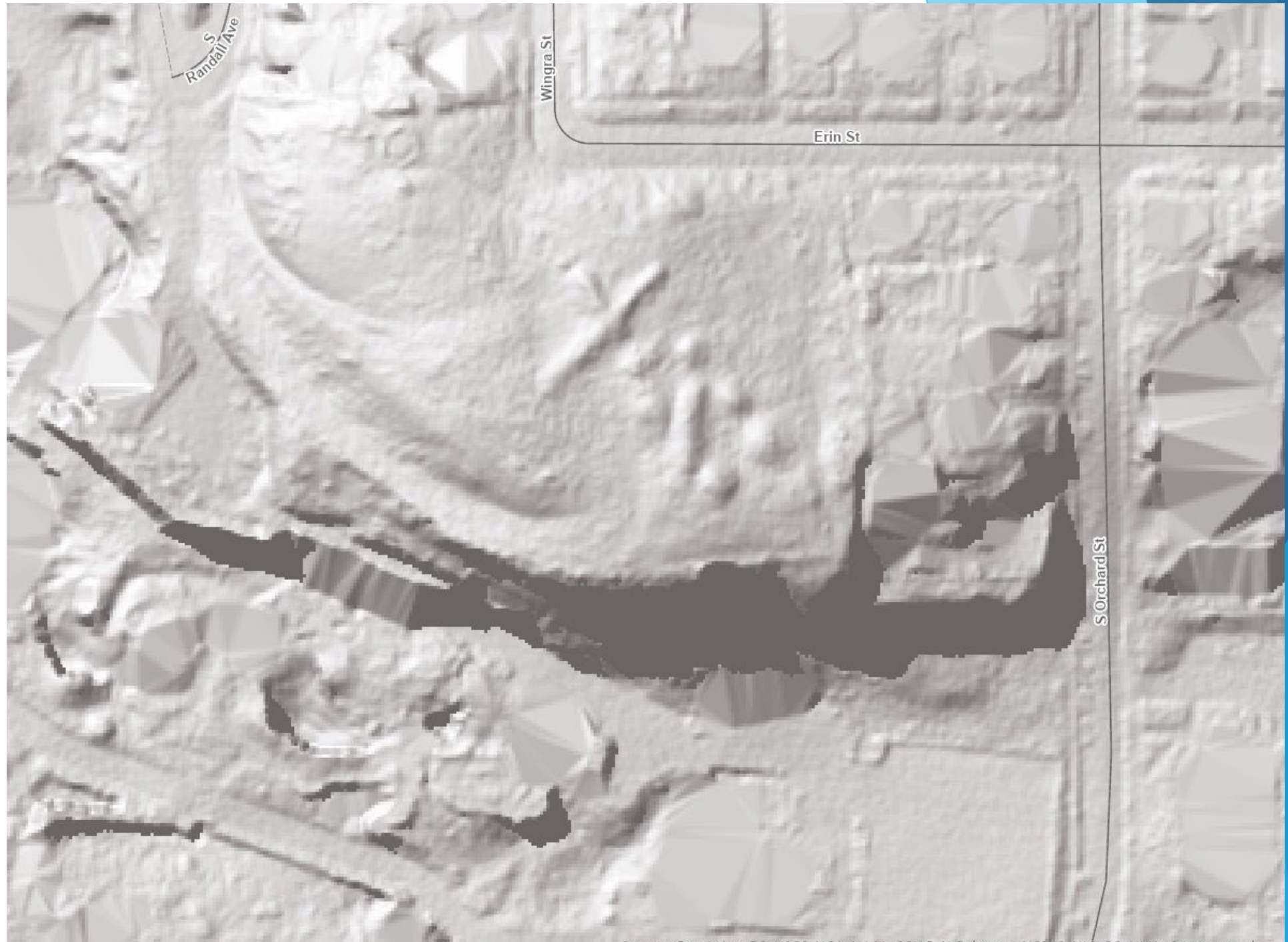


Vilas Park Mounds 2022 Aerial Photography



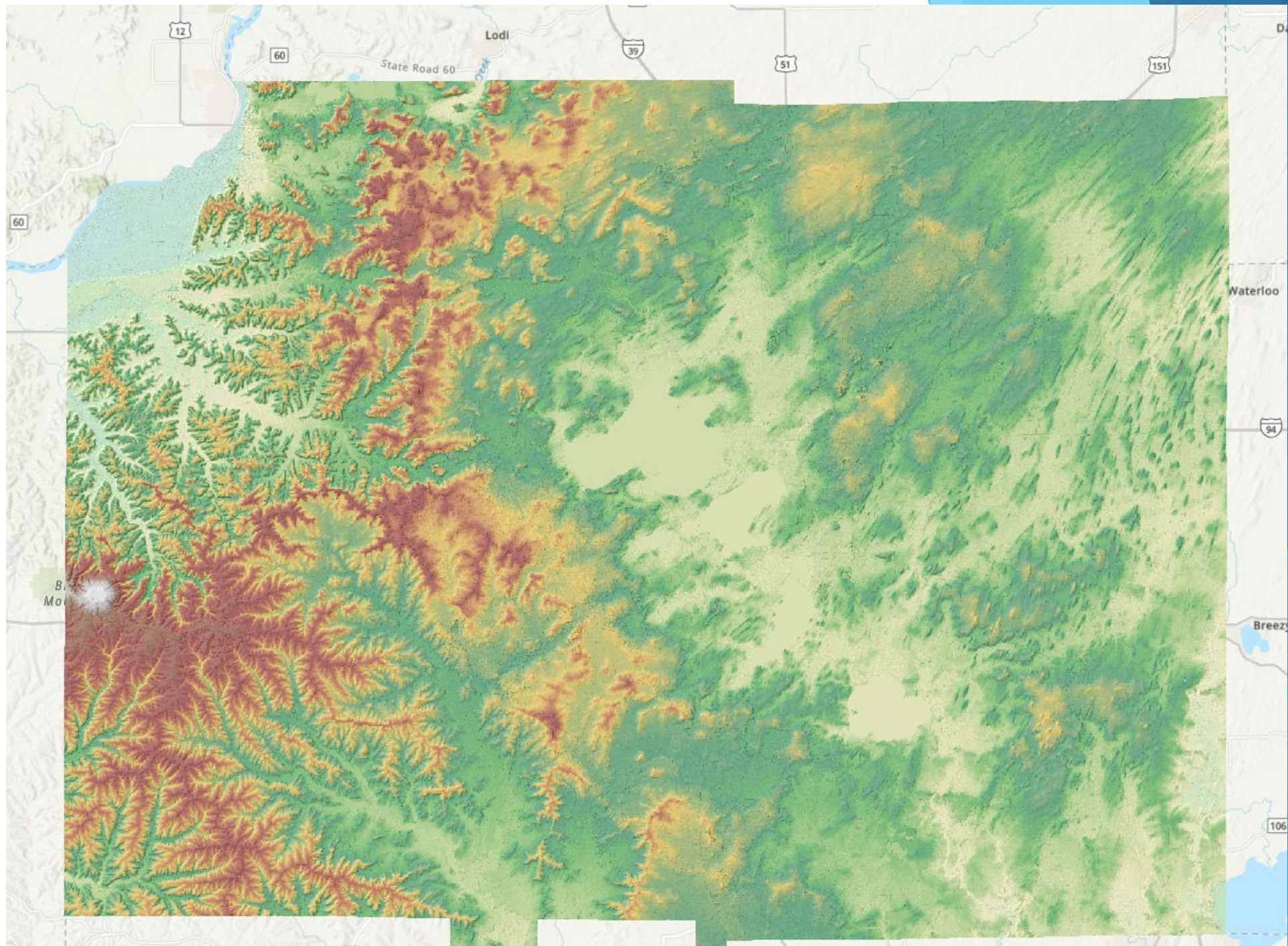
Vilas Park Mounds

2022 Digital
Elevation Model
(from LIDAR)



Questions:

- Can we scan the entire county digital elevation model for signs of possible mounds or other archaeological resources?
- Could we fly a special LIDAR survey focused on underwater resources?
- Can we add such data to the WHS archaeology inventory?
- How can we use such data for planning purposes, while protecting the resource?



Project Resources for 2025

- ▶ Brian Standing, Senior Planner, Dane County Planning and Development
- ▶ Duha Jamal, Planning Assistant (.35 FTE), University of Wisconsin DPLA
 - ▶ Jamal.duha@danecounty.gov