

# FAMILY COURT SERVICES

**Ms. Jennifer Cooke, LMFT**

Director

Cooke@danecounty.gov

608.266.4283



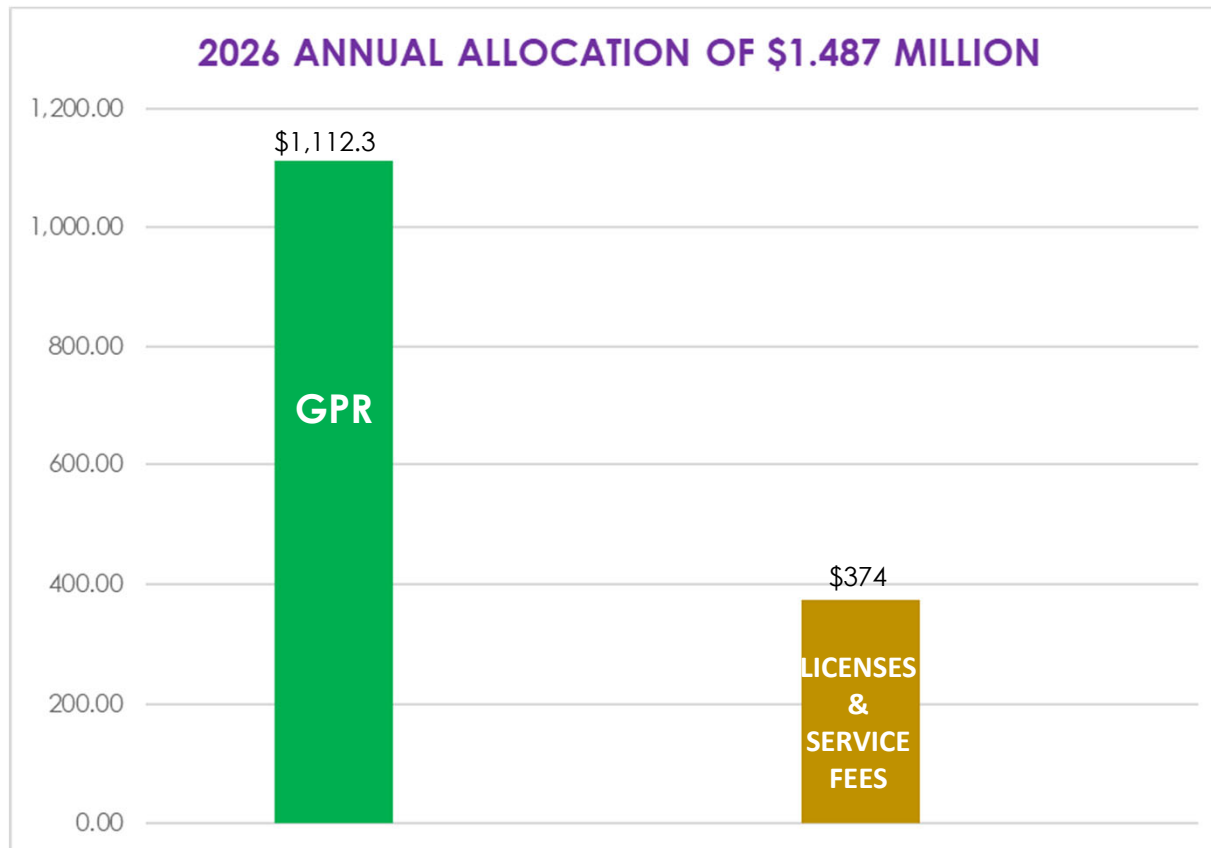
June 2026

# INTRODUCING FAMILY COURT SERVICES

1. Who are we (FCS)?
2. What is the purpose of our existence?
3. What sets FCS apart?
4. How is FCS structured?
5. Who are our clients?



# FCS RESOURCE ALLOCATION (2026)

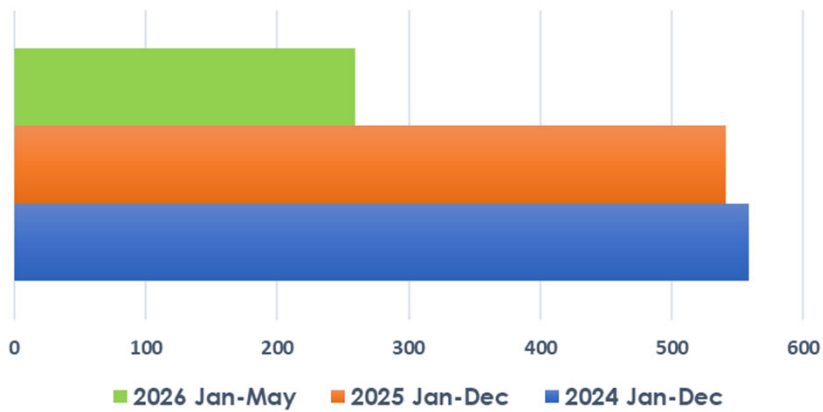


%	CATEGORY
97.4	Personnel
1.6	Operations
1	Contractual

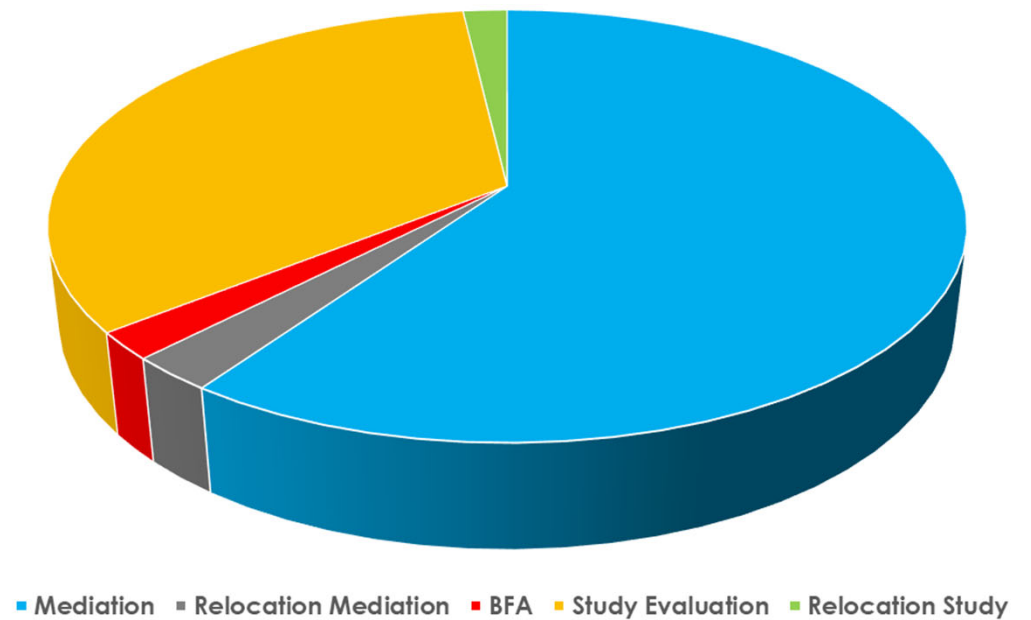
[familycourtservices@danecounty.gov](mailto:familycourtservices@danecounty.gov)

# FCS REACH

TREND IN REFERRALS



TOTAL WORKLOAD IN 2025: 541 REFERRALS

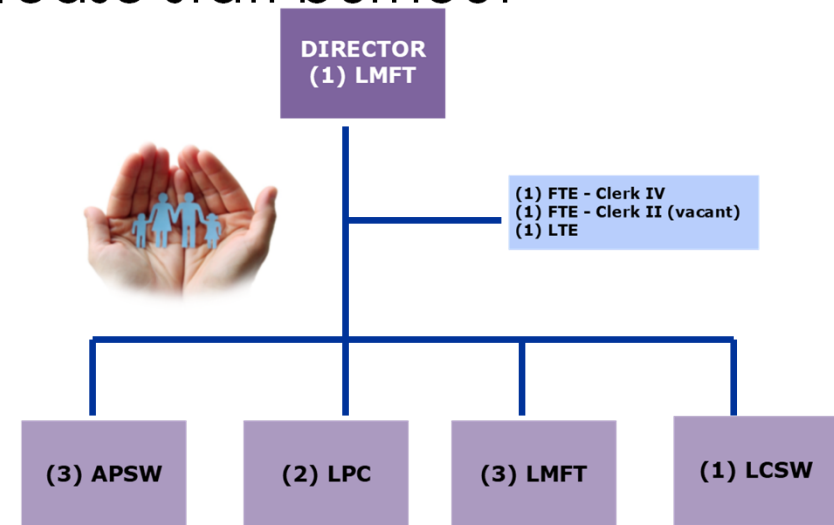


[familycourtservices@danecounty.gov](mailto:familycourtservices@danecounty.gov)

# URGENT NEEDS

- Improved space for parent/child observations
- A facility to ensure the safe handover of children between parents subject to no-contact orders
- More low-cost mental health providers

- Reduce staff turn over
- Increase continued learning
- Decrease staff burnout



# FORWARD THINKING

- Triage & Case Matching
- Community networking
- Safe exchange
- Clear, accessible guidance and comprehensive services



READY FOR YOU!



[familycourtservices@danecounty.gov](mailto:familycourtservices@danecounty.gov)