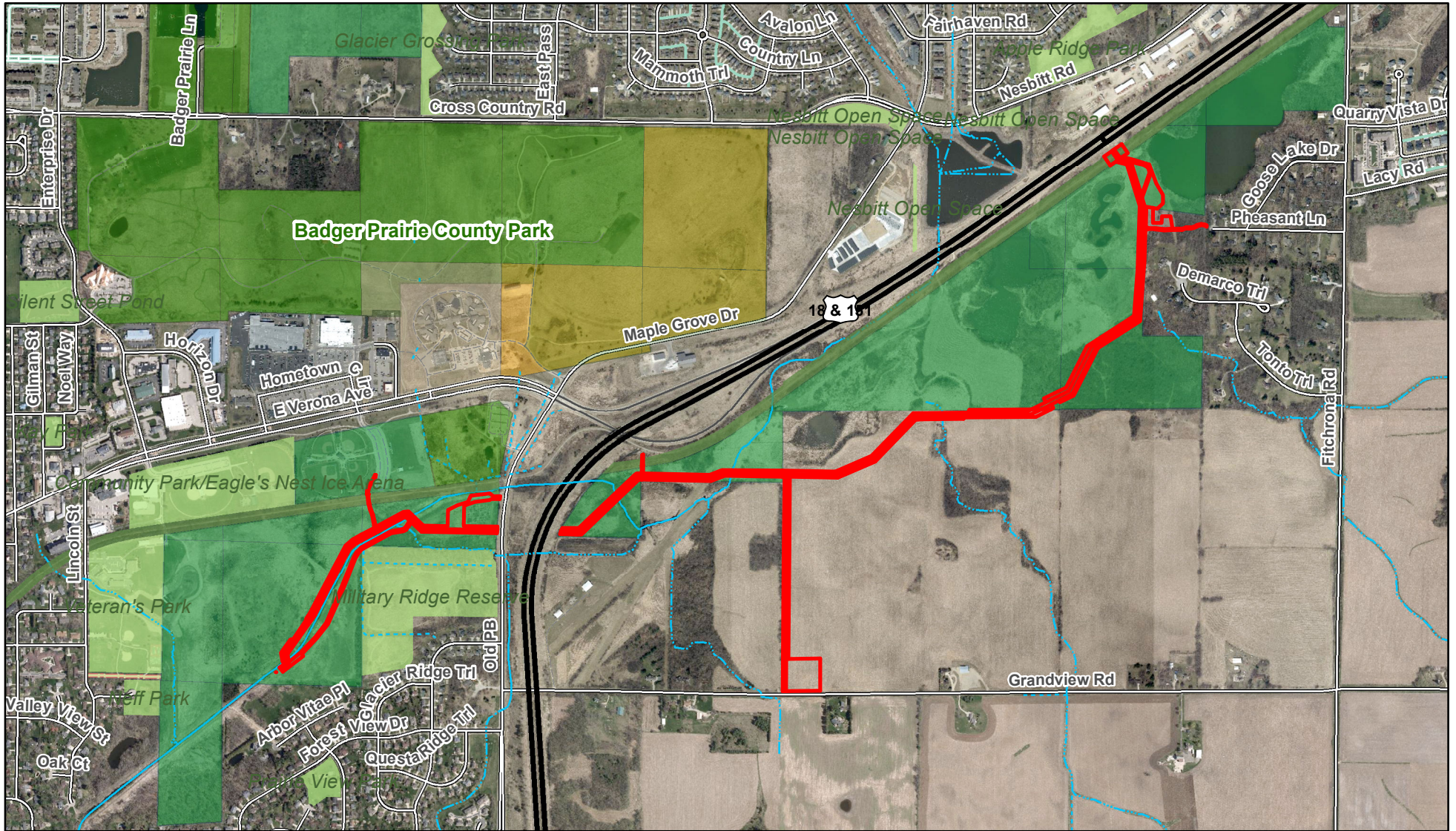
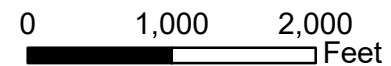


Madison Metropolitan Sewerage District Sewer Line Easement Ice Age Trail Junction NRA, City and Town of Verona



Red Line MMSD Easement Corridor



Data Sources
Digital Orthophoto: 2022
Tax Parcels: 2023

Prepared by Dane County Land & Water Resources Department, May 24, 2023.

Document Path: H:\LandAcquisition\AcquisitionProjects\Verona\MMSD_GooseLake_Inteceptor\MMSD_line_Map.mxd

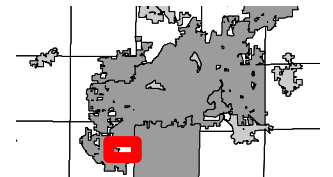
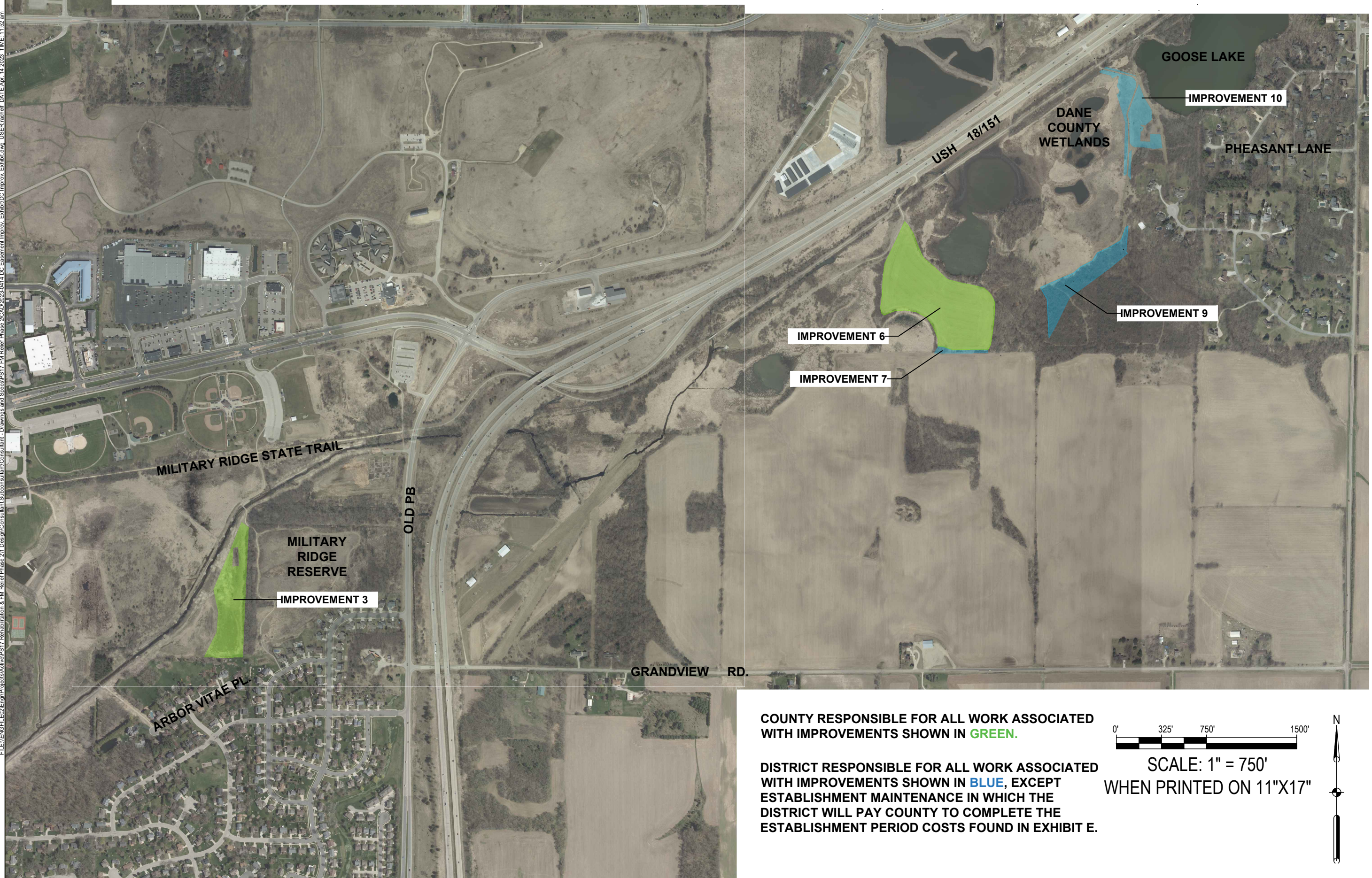


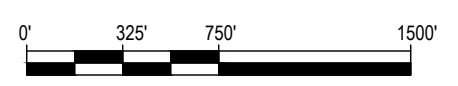
EXHIBIT D: PROJECT IMPROVEMENT AREAS

FILE: \\ENG\FLE2\Eng\Projects\Active\PS17_Rehabilitation & FM Relief Phase 2\11_Design\Consultant\Subconsultant\Consultant - Drawings and Special\PS17_FM Relief Phase 2\CAD\2023\0414 DC Easement Improv. Exhibit\DC Improv. Exhibit.dwg USER: rchahf DATE: Apr. 14, 2023, TIME: 11:52 am



COUNTY RESPONSIBLE FOR ALL WORK ASSOCIATED WITH IMPROVEMENTS SHOWN IN GREEN.

DISTRICT RESPONSIBLE FOR ALL WORK ASSOCIATED WITH IMPROVEMENTS SHOWN IN BLUE, EXCEPT ESTABLISHMENT MAINTENANCE IN WHICH THE DISTRICT WILL PAY COUNTY TO COMPLETE THE ESTABLISHMENT PERIOD COSTS FOUND IN EXHIBIT E.



SCALE: 1" = 750'
WHEN PRINTED ON 11"X17"

