

REGIONAL MAP



PROJECT INFORMATION

PROJECT TYPE: PROPOSED WIRELESS COMMUNICATION TOWER

PROJECT CONSULTANT: TERRA CONSULTING GROUP
600 BUSSE HIGHWAY
PARK RIDGE, IL 60068
(847) 698-6400

LATITUDE: 42° 57' 02.18" N (1A CERTIFICATION)

LONGITUDE: 89° 13' 05.10" W (1A CERTIFICATION)

APPLICANT: TOWNORTH DEVELOPMENT, LLC

LAKE KEGONSA



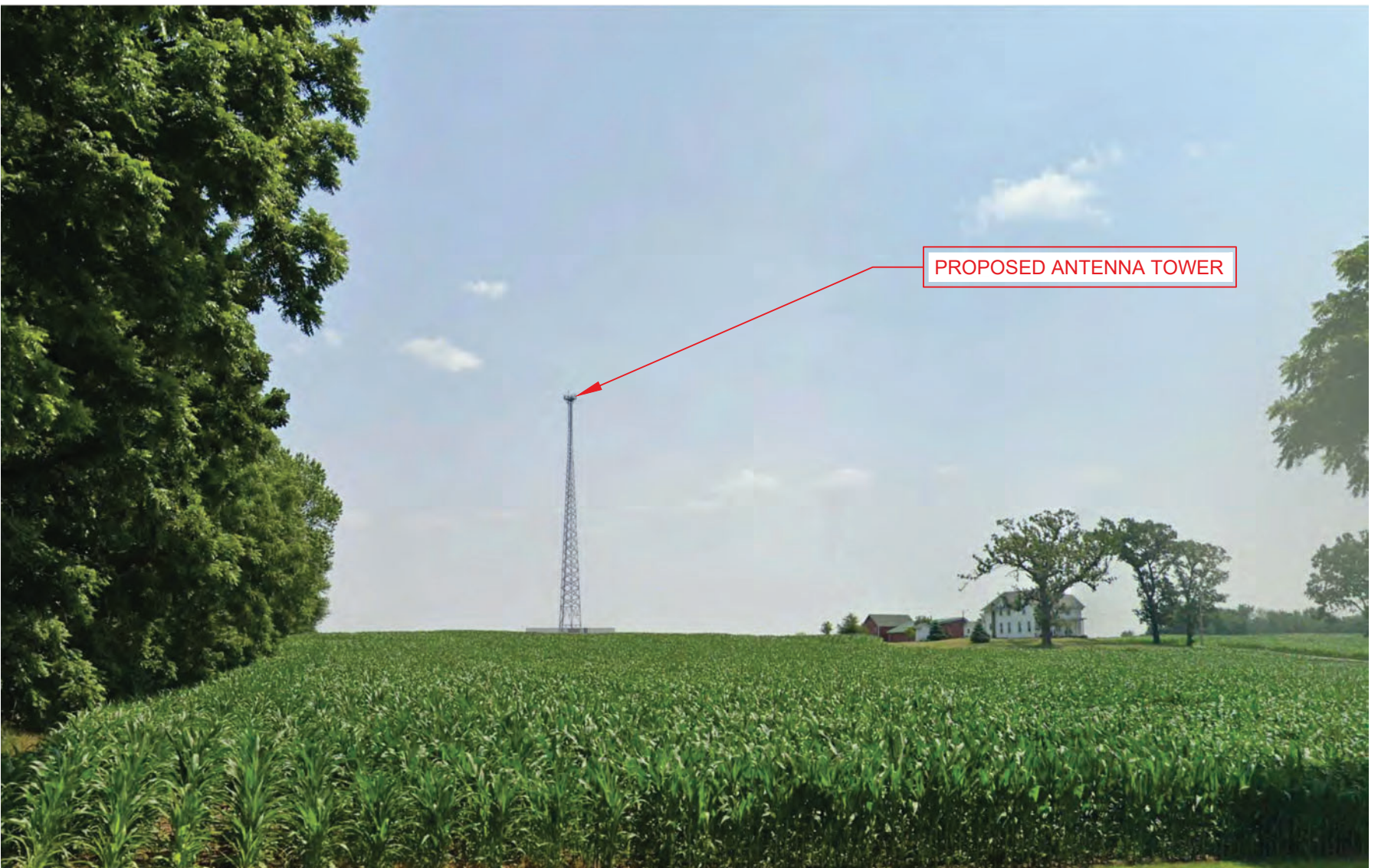
600 Busse Highway, Park Ridge, IL 60068
Phone: 847.698.6400 Fax: 847.698.6401
TCG#170051



VIEW 1



BEFORE



AFTER

NOTE: THIS PHOTO SIMULATION IS A VISUAL INTERPRETATION OF THE PROPOSED DESIGN. FINAL CONSTRUCTION MAY DIFFER FROM WHAT IS PRESENTED HERE.

LAKE KEGONSA

View from West looking East



TERRA
CONSULTING GROUP

600 Busse Highway, Park Ridge, IL 60068
Phone: 847.698.6400 Fax: 847.698.6401
TCG#170051



TowerNorth

VIEW 2



BEFORE



AFTER

NOTE: THIS PHOTO SIMULATION IS A VISUAL INTERPRETATION OF THE PROPOSED DESIGN. FINAL CONSTRUCTION MAY DIFFER FROM WHAT IS PRESENTED HERE.

LAKE KEGONSA

View from Southwest looking Northeast



TERRA
CONSULTING GROUP

600 Busse Highway, Park Ridge, IL 60068
Phone: 847.698.6400 Fax: 847.698.6401
TCG#170051



TowerNorth