

Permanent Men's Shelter Update

March 6, 2022

City County Homeless Issues Committee





Common Council Action To Date

Oct 2021

- Authorized the purchase of 2002 Zeier Road as temporary shelter space for males
- Authorized the purchase of 1904 Bartillon Dr from City's Landbanking fund

Nov 2021

- Adopted 2022 Capital Budget, between City of Madison and Dane County have authorized up to \$9 million for capital. [\$6 million City of Madison/ \$3 million Dane County]

April 2022

- Authorized the use of 1902 Bartillon Dr as site for a permanent shelter facility
- Authorized City Engineering staff to release Request for Proposals for Architectural Design Services
- Authorized Community Development staff to work with Dane County staff to release Request for Qualifications for Operator



Common Council Action To Date

May 2022

- Authorized City Engineering staff to proceed with renovations at 2002 Zeier Rd and added additional funds for renovations

Aug 2022

- Approved the selection of Dimension IV-Madison and team to provide architectural and engineering design services.

Oct 2022

- Approved the selection of Porchlight Inc as the operator of the purpose built shelter.
- **Project team began seeking community feedback on design and services (Trauma- Informed Design Assessment)**

Nov 2022

- Adopted 2023 Capital Budget, adding \$11 million from City of Madison, Dane County and federal funds. Securing up to \$21 million for capital costs



Trauma-Informed Design Assessment

Trauma-Informed Design Assessment

Prepared by: Shopworks Architecture

Submitted to and in partnership with:

- **Dimension IV Madison Design Group**
- **City of Madison**
- **Dane County**



Community Engagement- Focus Groups

Summary:

| | | |
|---------------------------------|--------------|--|
| Monday October 24 th | 9am-10am | 1902 Bartillon- Tour site and neighborhood |
| Monday October 24 th | 10am-11:30am | The Beacon, Tour and discussion with staff |
| Monday October 24 th | 12-2pm | The Beacon, Participants in-person tabling/drop in interviews. They are hoping to use lunch time to sit with folks and talk. |
| Monday October 24 th | 3-4pm | Dairy Drive Tour and discussion with staff* |
| Monday October 24 th | 4-5:30pm | Dairy Drive, Participants |
| Monday October 24 th | 6-7:30pm | Salvation Army, single women shelter Participant engagement |

| | | |
|----------------------------------|------------|---|
| Tuesday October 25 th | 8-9am | Grace Episcopal Church- Tour of former site of 30 years |
| Tuesday October 25 th | 10am-11am | Hawthorne Library- outreach staff Catalyst, Urban Triage, MACH, Briarpatch, Tellurian FSSF |
| Tuesday October 25 th | 11am-1pm | Hawthorne Library- Lived Experienced Committee members, folks invited by outreach providers (Lunch provided) |
| Tuesday October 25 th | 3pm-4:30pm | Zeier Rd- Tour and discussion with staff |
| Tuesday October 25 th | 5:30-7pm | Zeier Rd- Participants in-person tabling/drop in interviews. They are hoping to use dinner time to sit with folks and talk. |

We partnered with a research team at [Shopworks Architecture](#) to conduct focus groups in the community to understand how people are interacting with current shelter and service provision spaces, focusing on the experience of safety, connection, and choice, among others.



Community Engagement- Virtual Focus Groups

| October 27 th | Community partners working with undocumented individuals, Asylum Seekers, or individuals who traditionally don't access emergency housing systems |
|--------------------------|---|
| October 27 th | Community partners who provide medical or health related services. |
| November 2 rd | Community partners who provide behavioral health services. |
| November 3 rd | Homeless Services Consortium CORE Committee- focus on feedback of permanent housing connections |
| | |



Trauma Informed Design Themes

Theme 1: Big Picture

Theme 2: End Users

Theme 3: Guest Experience

Theme 4: Staff Experience



Summary of Recommendations

- **Desire to have 24/7 Shelter**
- **Desire to serve couples**
- **Prioritization of housing services (i.e. case management, housing navigation)**
- **Smaller sleeping areas**
- **Security measures**
- **Onsite health care and behavioral health services**
- **Flexible, multiuse spaces**
- **Accessibility, consideration of mobility needs**
- **Adequate bathroom facilities**
- **Adequate place for sleeping and dining**



Lessons From Other Shelters

- **Trauma Informed Design Assessment ([page 32](#))**
- **Purpose-Built Design ([Downtown Madison, Inc](#))**
- **Shelter Strategies ([Insight and Perspectives From Shelter Providers](#)) By the City of Madison**

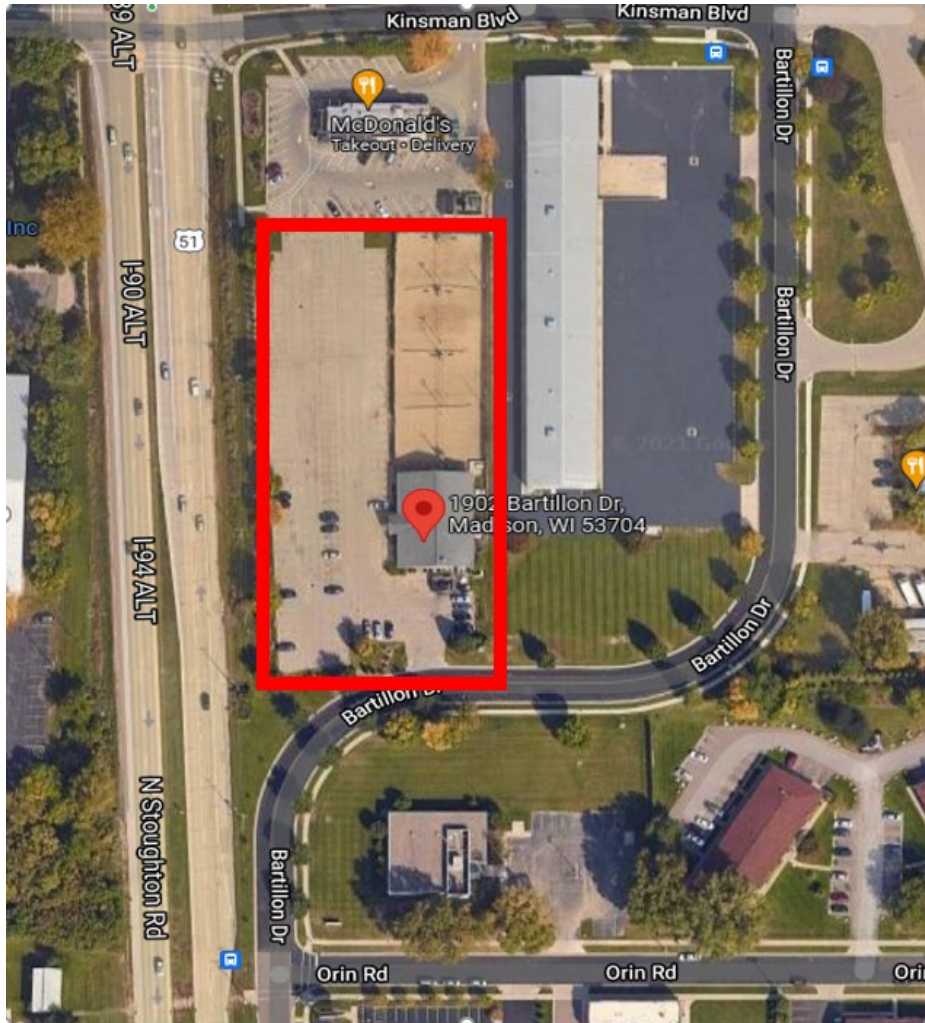


Current Engagement Partners

- **Porchlight, Inc**
- **Nurse Disrupted, Inc**
- **Madison Street Medicine**
- **Kabba Recovery Services**
- **Catalyst for Change**
- **The Beacon**
- **City Engineering**
- **City Community Development Division**
- **Dane County Housing Access & Affordability**
- **Dane County Human Services**
- **Homeless Services Board of Directors Liaison**
- **Dimension IV Madison Design Group**



Design Considerations

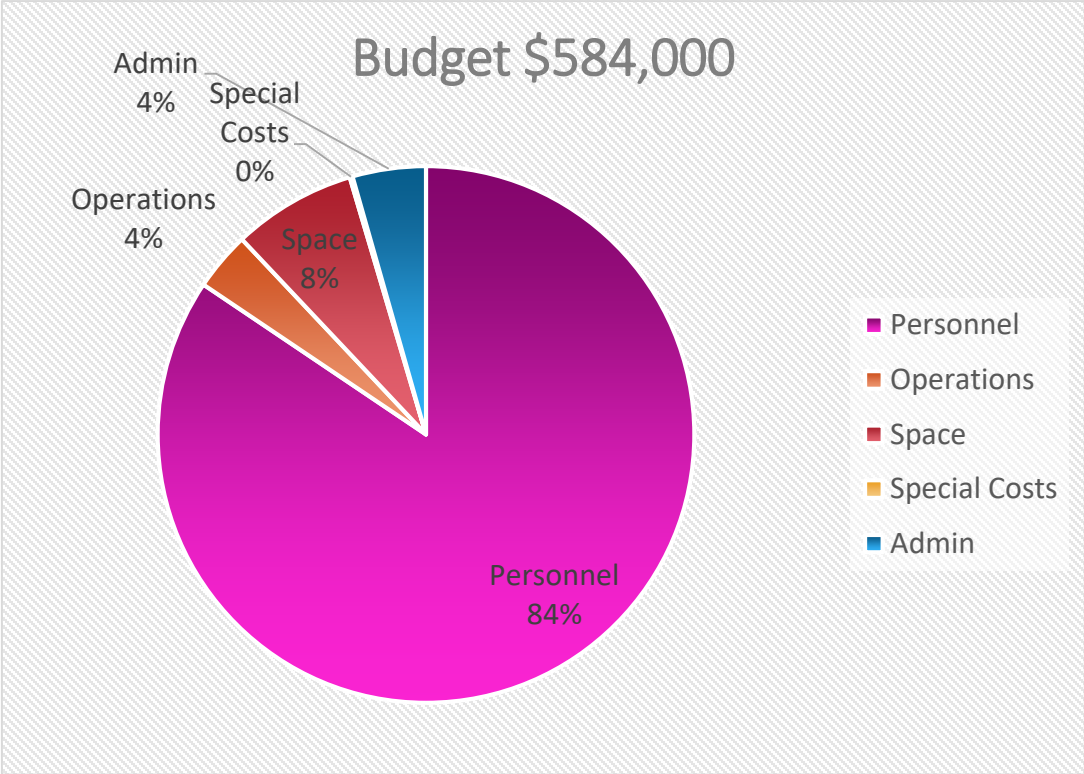


- Lot size: 92,325 square feet
- Located in a Transit Overlay District (TOD)
- Green Space and Set Back Requirements
- Sustainability Requirements
- Percentage for Arts Requirements
- Capital Budget Authority \$21 million

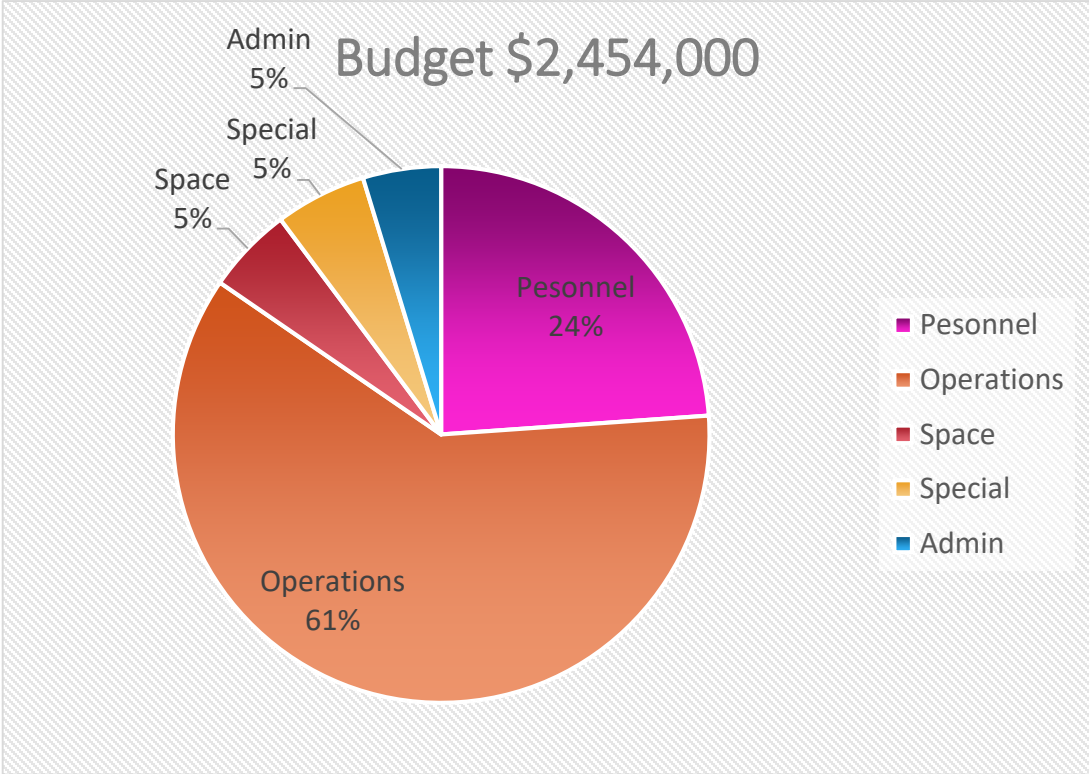


Budget Considerations

2019 Expenses (pre-pandemic)



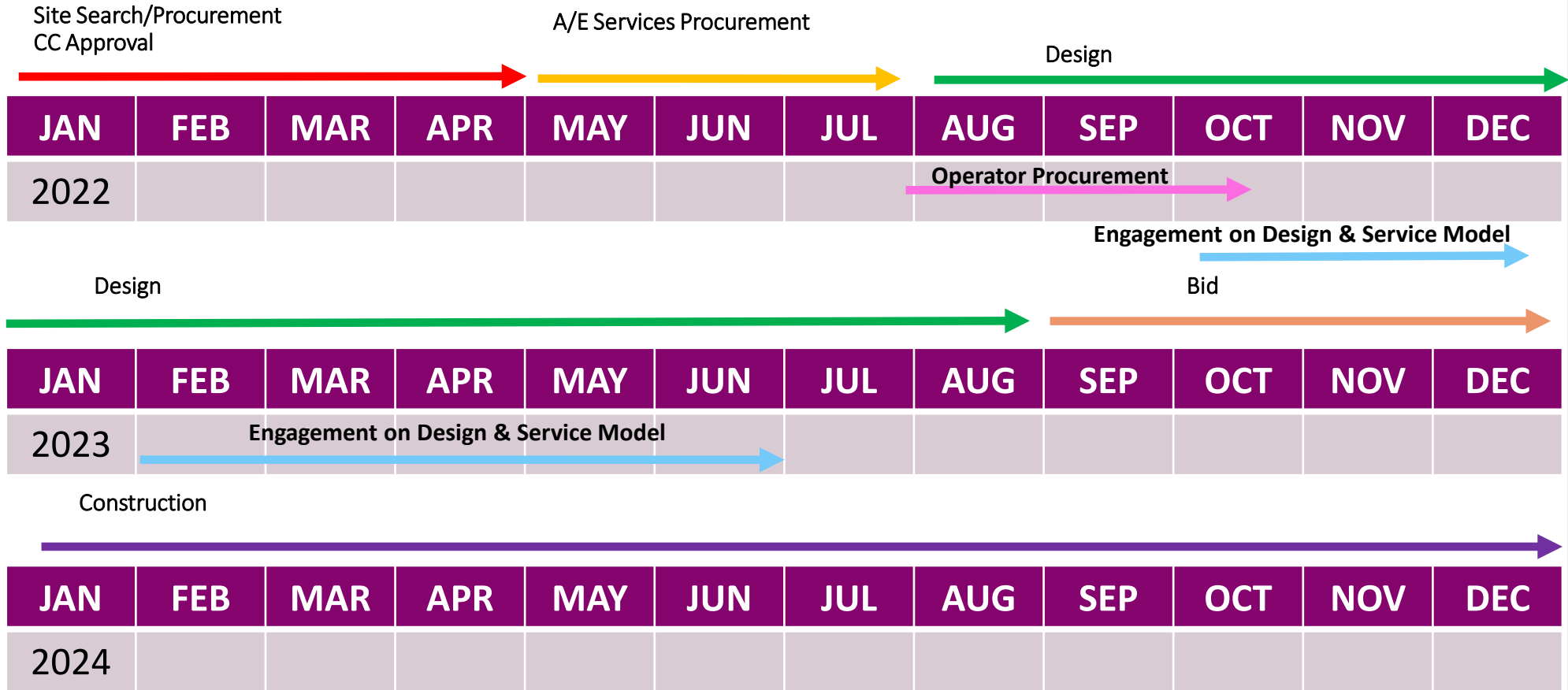
2023 Expenses





TENTATIVE

1904 Bartillon Project Schedule



Q1 2025 – TENTATIVE CONSTRUCTION COMPLETION



Future Engagement- Mid April

- **Building Design**
- **Service Model Approach**
- **Neighborhood Meetings**
- **Expand City Department Engagment**

Other Information



Project Website:

www.cityofmadison.com/engineering/projects/bartillon-shelter

Project Contacts:

Jon Evans (City of Madison Engineering)

Ph: 608-243-5893

jevans@cityofmadison.com

Linette Rhodes (Community Development Division)

Ph: 608-261-9240

lrhodes@cityofmadison.com